

Specifications

Current Rating: 3A AC,DC
 Contact Resistance: 13mΩ Max
 Insulation Resistance: 1000MΩ Min
 Withstanding Voltage: 500V AC/minute
 Temperature Range: -55°C ~ +105°C

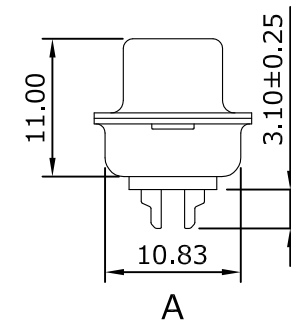
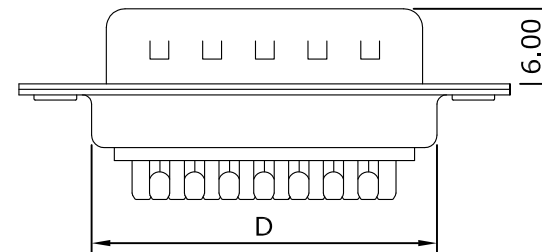
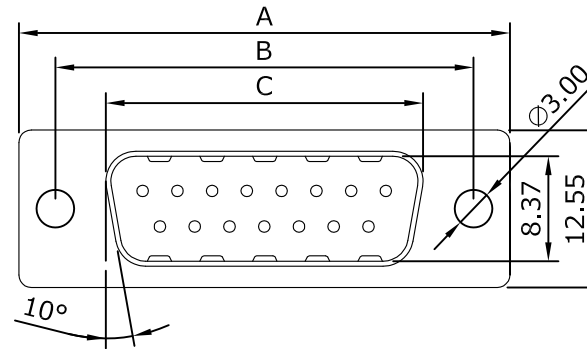
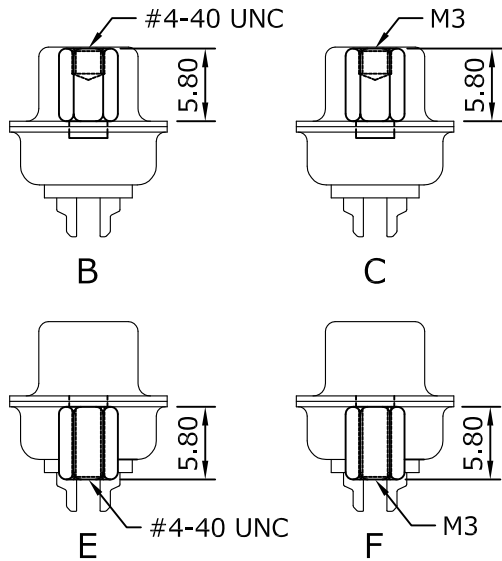
Material

Insulator: P.B.T, UL94V-0
 Contact: Copper Alloy

ORDER INFORMATION



V	S	X	1	-	M	XX	X	X	X
D-SUB Type	Solder Type	RoHS + P.B.T			Male	No. of Contacts	N:Nickel Shell T:Tin Shell	W:White Insulator B:Black Insulator	
G0:Gold Flash	S0:Selective Flash						A:Non Accessories		
G1:Gold 3u"	S1:Selective 3u"						B:Front Rivet #4-40, Height=5.8		
G2:Gold 5u"	S2:Selective 5u"						C:Front Rivet M3, Height=5.8		
G3:Gold 10u"	S3:Selective 10u"						D:Rear Rivet #4-40, Height=5.8		
G4:Gold 15u"	S4:Selective 15u"						E:Rear Rivet M3, Height=5.8		
G5:Gold 30u"	S5:Selective 30u"								



Positions	A	B	C	D
9	30.81	24.99	16.92	19.23
15	39.14	33.32	25.50	27.56
25	53.04	47.04	38.96	41.28
37	69.32	63.50	55.42	57.33

			MCT		PART NO.	VSX1-MXXXXX	DATA	2008/05/12
					DRAWING NO.	VSX1-MXXXXX	DRAWN	Sayid
					CUSTOMER P/N		APPROVED	Max
REV.	DESCRIPTION	DATA	TITLE: D-SUB Solder Type	REV. A	TOLERANCE .X ±0.25 .XX ±0.20	SCALE FREE	UNIT mm	