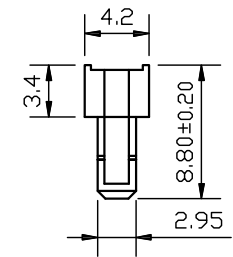
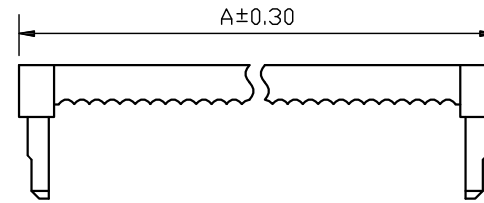
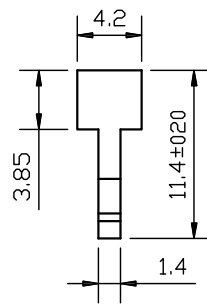
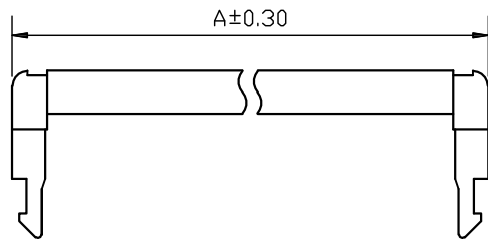
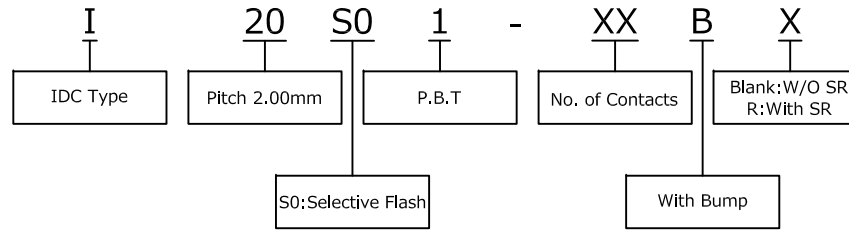


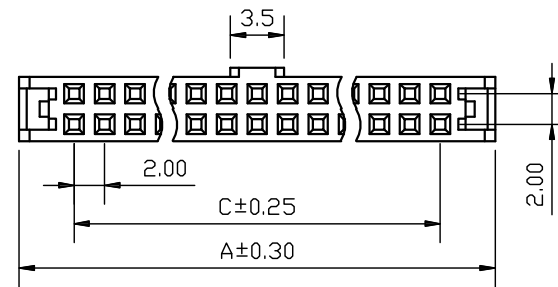
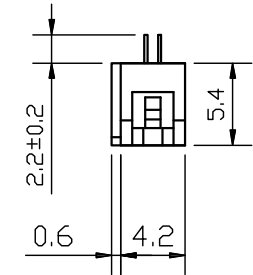
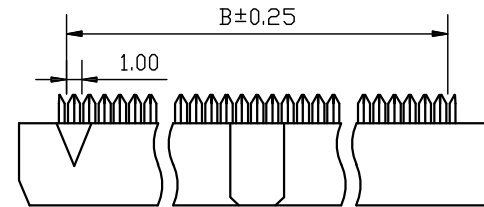
SPECIFICATIONS

Current Rating: 1Amps
 Voltage Rating: 250V AC/DC
 Contact Resistance: 20m Ω Max
 Insulation Resistance: 100M Ω Min
 Withstanding Voltage: 500V AC for 1 minute
 Temperature Range: -40°C to +105°C
 Contact : Copper Alloy
 Insulator: PBT, UL94V-0

ORDER INFORMATION



Pos.	Dim. A	Dim. B	Dim. C	Pos.	Dim. A	Dim. B	Dim. C
6	11.40	5.00	4.00	34	39.40	33.00	32.00
8	13.40	7.00	6.00	36	41.40	35.00	34.00
10	15.40	9.00	8.00	38	43.40	37.00	36.00
12	17.40	11.00	10.00	40	45.40	39.00	38.00
14	19.40	13.00	12.00	44	49.40	43.00	42.00
16	21.40	15.00	14.00	48	53.40	47.00	46.00
18	23.40	17.00	16.00	50	55.40	49.00	48.00
20	25.40	19.00	18.00	54	59.40	53.00	52.00
22	27.40	21.00	20.00	56	61.40	55.00	54.00
24	29.40	23.00	22.00	60	65.40	59.00	58.00
26	31.40	25.00	24.00	62	67.40	61.00	60.00
28	33.40	27.00	26.00	64	69.40	63.00	62.00
30	35.40	29.00	28.00	68	73.40	67.00	66.00
32	37.40	31.00	30.00	80	85.40	79.00	78.00



MCT	PART NO.	I20S01-XXBX	DRAWN	Andrew				
	DRAWING NO.	I20S01-XXBX	CHECKED	Claudia				
	DATE	2018/03/27	APPROVED	Brian				
TITLE:	IDC Socket 2.00mm	REV. A0	TOLERANCE	.X ±0.25 .XX ±0.20	SCALE	1:1	UNIT	mm