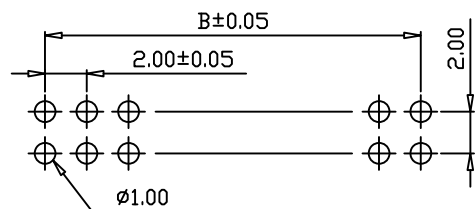
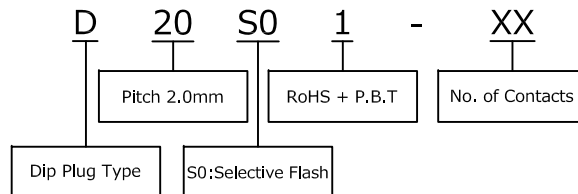


### SPECIFICATIONS

Current Rating: 1.0A AC,DC  
 Contact Resistance: 20mΩ Max  
 Insulation Resistance: 1000MΩ Min  
 Withstanding Voltage: 500V AC/minute  
 Temperature Range: -40°C ~ +105°C  
 Insulator: PBT+30%G.F., UL94V-0  
 Contact: Copper Alloy

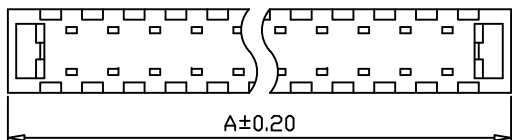
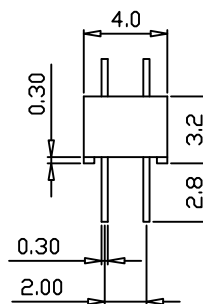
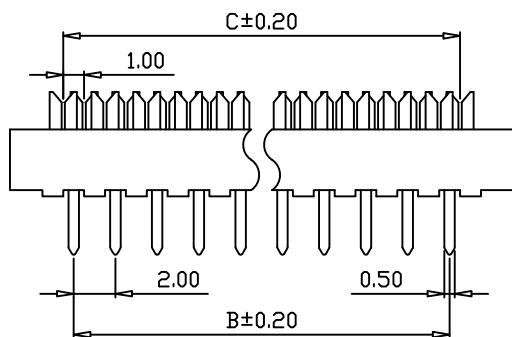
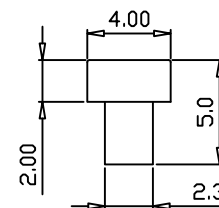
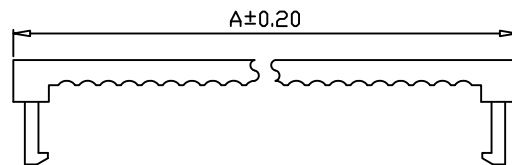
### ORDER INFORMATION



RECOMMEND P.C. BOARD LAYOUT

Pos	Dim.A	Dim.B	Dim.C
6	10.10	4.00	5.00
8	12.10	6.00	7.00
10	14.10	8.00	9.00
12	16.10	10.00	11.00
14	18.10	12.00	13.00
16	20.10	14.00	15.00
18	22.10	16.00	17.00
20	24.10	18.00	19.00
22	26.10	20.00	21.00
24	28.10	22.00	23.00
26	30.10	24.00	25.00
28	32.10	26.00	27.00
30	34.10	28.00	29.00
32	36.10	30.00	31.00

Pos	Dim.A	Dim.B	Dim.C
34	38.10	32.00	33.00
36	40.10	34.00	35.00
38	42.10	36.00	37.00
40	44.10	38.00	39.00
42	46.10	40.00	41.00
44	48.10	42.00	43.00
46	50.10	44.00	45.00
48	52.10	46.00	47.00
50	54.10	48.00	49.00
52	56.10	50.00	51.00
54	58.10	52.00	53.00
56	60.10	54.00	55.00
58	62.10	56.00	57.00
60	64.10	58.00	59.00



<b>MCT</b>	PART NO.	D20S01-XX	DRAWN	Andrew
	DRAWING NO.	D20S01-XX	CHECKED	Claudia
	DATE	2018/03/23	APPROVED	Brian

TITLE:	REV.	TOLERANCE	SCALE	UNIT	NO.	DESCRIPTION	DATE
DIP PLUG 2.0mm PITCH	A0	.X ±0.25 .XX ±0.20	1:1	mm			