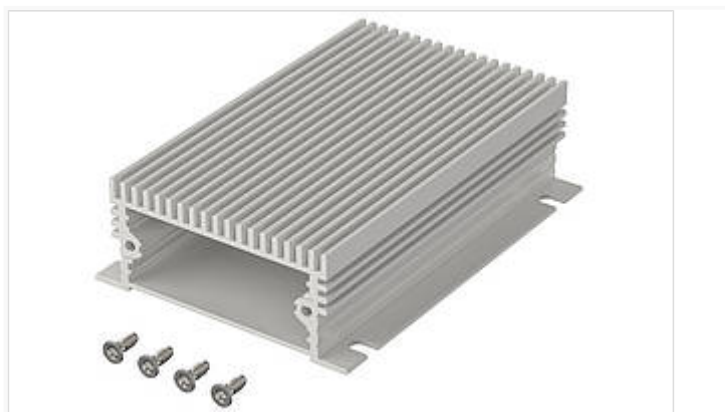


## Filotec

Enclosures with cooling fins on one half-shell and continuous profiled wall brackets on the other half-shell



F 524-100 KWL

Order no.: 97453100

\* = Available on request.

### Characteristics

#### Protection class

IP 40

#### Enclosure Material

Al Mg Si 0.5 anodised; for details, please see Technical Information

#### Scope of delivery

2 enclosure half shells, 4 screws for mounting cover

### Note

C = profile length, special lengths on request. Covers: See following pages. Please order separately.

\*\* = supplied without wall fitting holes and screw accessory pack. Please order fixing screws (1 piece) separately: 59000175.

### Dimensions

#### Dimensions

55.3 x 24.4 x 100 mm

#### Product drawing

[97453100\\_F-524-100-KWL.pdf](#)

### Important!

To compensate for pressure when temperatures change and cause moisture in the enclosure, we recommend that you use a pressure compensation element.

» Additional information

## Technical documentation / Downloads

---

### Technical drawings

3D product data in STEP format: 97453100 F524-100-KWL.stp (1.2 MB)  
Drawing for mechanical processing: 97453100 F-524-100-KWL-G.dxf (781.6 KB)

Milling contours are shown here as a DXF file. (Sub D, USB, HDMI, cable glands, ...)

Product drawing in PDF format: 97453100 F-524-100-KWL.pdf (136.8 KB)

Product drawing in DXF format: 97453100 F-524-100-KWL.dxf (875.5 KB)

### Product information

Filotec GB.pdf (511.3 KB)

Thermal resistance Filotec F KWL EN.pdf (111.2 KB)

## Matching accessories

---



Cover, natural-coloured anodised aluminium, 2 mm

97655240 F 524 D

For F 524-...