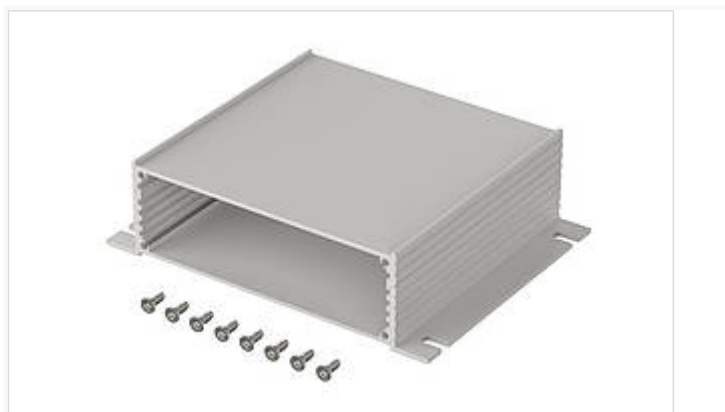


## Filotec

Filotec enclosures with membrane keypad area (1,5 mm) on one half-shell and continuous profiled wall brackets on the other half-shell



F 1036-100 WL

Order no.: 97216100

\* = Available on request.

### Characteristics

#### Protection class

IP 40

#### Enclosure Material

Al Mg Si 0.5 anodised; for details, please see Technical Information

#### Scope of delivery

2 enclosure half shells, 8 screws for mounting cover

#### Note

C = profile length, special lengths on request. Covers: See following pages. Please order separately.

\*\* = supplied without wall fitting holes and screw accessory pack. Please order fixing screws (1 piece) separately: 59000175.

### Dimensions

#### Dimensions

105 x 36 x 100 mm

#### Product drawing

[97216100\\_F-1036-100-WL.pdf](#)

### Important!

To compensate for pressure when temperatures change and cause moisture in the enclosure, we recommend that you use a pressure compensation element.

» Additional information

## Technical documentation / Downloads

---

### Technical drawings

3D product data in STEP format: 97216100 F1036-WL-100.stp (1.1 MB)  
Drawing for mechanical processing: 97216100 F-1036-WL-100-G.dxf (665.6 KB)

Milling contours are shown here as a DXF file. (Sub D, USB, HDMI, cable glands, ...)

Product drawing in PDF format: 97216100 F-1036-100-WL.pdf (155.0 KB)

Product drawing in DXF format: 97216100 F-1036-100-WL.dxf (1.3 MB)

### Product information

Filotec GB.pdf (511.3 KB)

## Matching accessories

---



Cover, natural-coloured anodised aluminium, 2 mm

97610360 F 1036 D

For F 1036-...