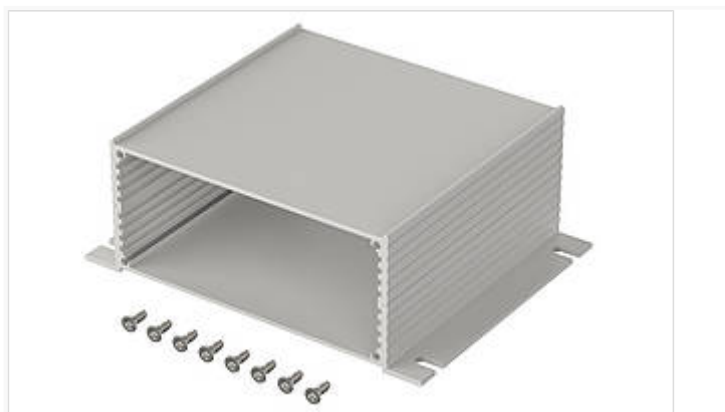


Filotec

Filotec enclosures with membrane keypad area (1,5 mm) on one half-shell and continuous profiled wall brackets on the other half-shell



F 1048-100 WL

Order no.: 97218100

* = Available on request.

Characteristics

Protection class

IP 40

Enclosure Material

Al Mg Si 0.5 anodised; for details, please see Technical Information

Scope of delivery

2 enclosure half shells, 8 screws for mounting cover

Note

C = profile length, special lengths on request. Covers: See following pages. Please order separately.

** = supplied without wall fitting holes and screw accessory pack. Please order fixing screws (1 piece) separately: 59000175.

Dimensions

Dimensions

105 x 48 x 100 mm

Product drawing

[97218100_F-1048-100-WL.pdf](#)

Important!

To compensate for pressure when temperatures change and cause moisture in the enclosure, we recommend that you use a pressure compensation element.

» Additional information

Technical documentation / Downloads

Technical drawings

3D product data in STEP format: 97218100 F1048-WL-100.stp (1.2 MB)
Drawing for mechanical processing: 97218100 F-1048-WL-100-G.dxf (723.0 KB)

Milling contours are shown here as a DXF file. (Sub D, USB, HDMI, cable glands, ...)

Product drawing in PDF format: 97218100 F-1048-100-WL.pdf (155.0 KB)

Product drawing in DXF format: 97218100 F-1048-100-WL.dxf (1.3 MB)

Product information

Filotec GB.pdf (511.3 KB)

Matching accessories



Cover, natural-coloured anodised aluminium, 2 mm

97610480 F 1048 D

For F 1048-...