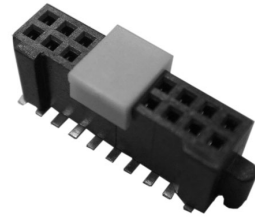


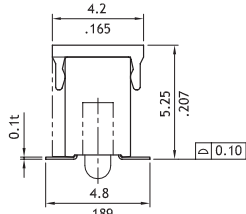
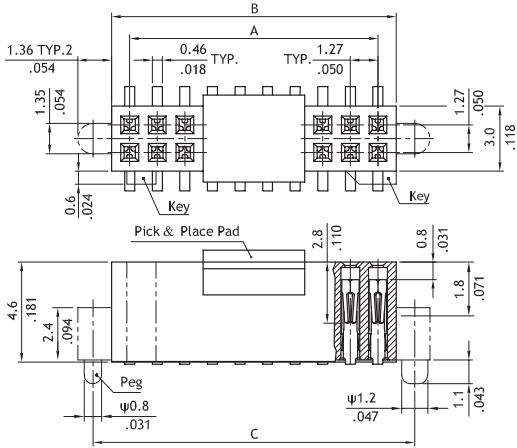
# CBC1 Series Dual Row Female Headers

- Mates with CH51,CH52,CH53,CH57and CHC2 connectors
- Pick and Place Pad available
- High performance contact design
- Option with PCB pegs
- Lead Free soldering process available

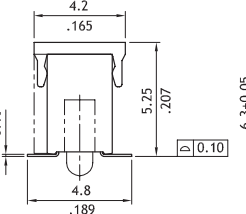
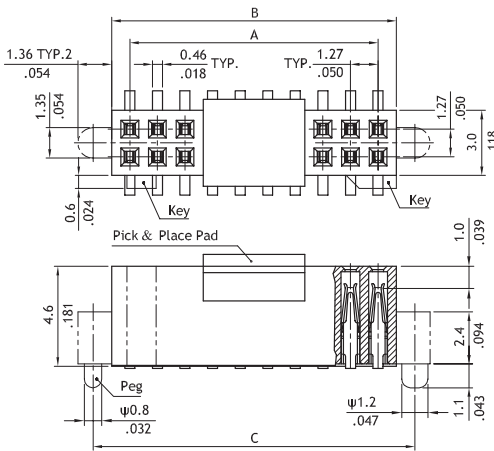


**RoHS** Compliant

P/N: CBC1\*\*2M1\*0-1\*

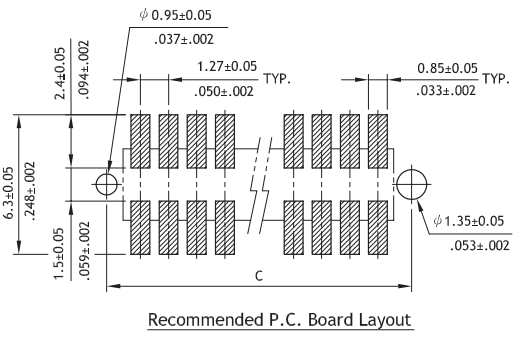


P/N: CBC1\*\*2M1\*0-2\*



A = 1.27 X No. of Spaces  
 B = A + 1.67  
 C = A + 3.05

<b>PN2X30-1.27 SMD</b> Without Key and Peg ; Without Pick & Place Pad	
With Key and Pegs ; Without Pick & Place Pad	
Without Key ; With Pegs ; Without Pick & Place Pad	
Without Key and Peg ; With Pick & Place Pad	
With Key and Pegs ; With Pick & Place Pad	
Without Key ; With Pegs ; With Pick & Place Pad	



## Ordering Code

**1**   **2**   **3**   **4**   **5**   **6**   **7**   **8**   **9**  
**CBC1 06 2 M 1 0 0 - 2 P**

- |                     |   |   |
|---------------------|---|---|
| <b>1</b> Series No. | <b>3</b> Plating code:                        | <b>7</b> Other option:                              |
| <b>2</b> Circuits:  | 2= Gold flash over Nickel                     | 0= Standard.  |
| with keys:          | *Optional plating available but MOQ requested | <b>8</b> Pin size for mate Pin header:              |
| 10,20 ~ 100         | <b>4</b> Tail Style:                          | 1= 0.46mm Round Pin                                 |
| (X1= 100)           | M= SMT Type                                   | 2= 0.4mm Square Pin                                 |
| without keys:       | <b>5</b> Insulator Color :1= Black            | <b>9</b> 0= Without Pick & Place Pad (Tube packing) |
| 06~100              | <b>6</b> Other options:                       | P= With Pick & Place Pad (Tape & Reel)              |
| (X1= 100)           | 0= Without Key and Peg                        |   |
|                     | 1= With Keys and Pegs                         |   |
|                     | 2= Without key and with pegs                  |   |