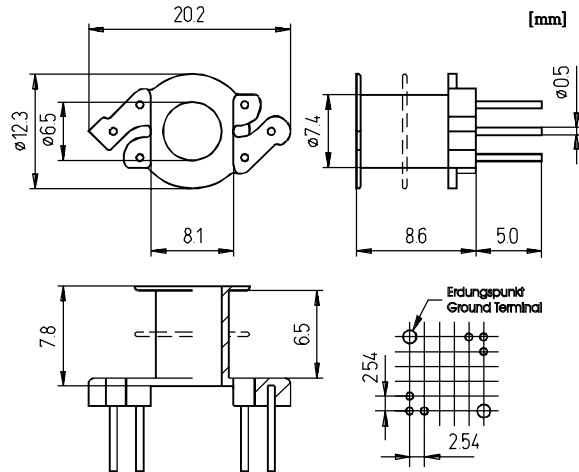




SPULENKÖRPER für RM-Kern RM 6 COIL FORMER for RM core RM 6

	Bezeichnung/Designation	
	SP-RM6-1070	SP-RM6-1488
Kammeranzahl No. of sections	1	2
A_N in mm ²	15,9	14,7
l_N in mm	31,0	31,0
max. Stiftanzahl max. no. of pins	6	6
Bestell-Nr. Order no.	522 060 010 11L	522 060 020 11L



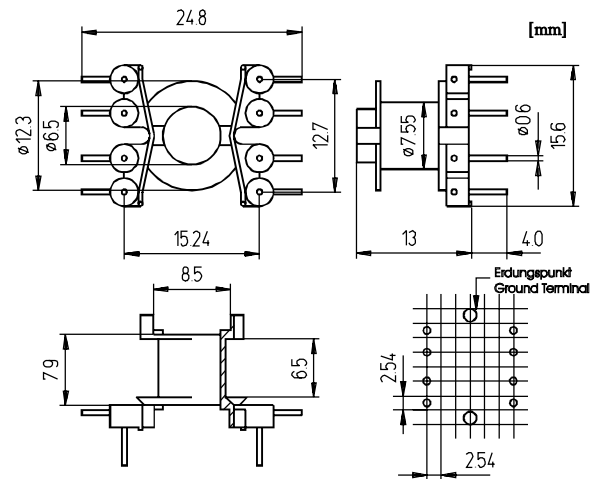
Standardmaterial/Standard material : Polyester (z.B./e.g. Bakelite UP 3420)

empfohlene Platinenbohrungen siehe S. 21
recommended diameters of p.c. board mounting holes see p. 21



SPULENKÖRPER für RM-Kern RM 6 linear COIL FORMER for RM core RM 6 linear

	Bezeichnung/Designation	
	SP-RM6-1542	
Kammeranzahl No. of sections	1	
A_N in mm ²	15,6	
l_N in mm	31,2	
max. Stiftanzahl max. no. of pins	8	
Bestell-Nr. Order no.	521 069 110 11J	



Standardmaterial/Standard material : Polybutylen(e)terephthalat(e) (z.B./e.g. Valox 420 SEO)

empfohlene Platinenbohrungen siehe S. 21
recommended diameters of p.c. board mounting holes see p. 21