

FLORENCE-Z90-B

~90° wide beam with added compatibility for Philips G4 LED modules

SPECIFICATION:

Dimensions	61.0 x 286.0 mm
Height	8.5 mm
Fastening	screw
ROHS compliant	yes ⓘ

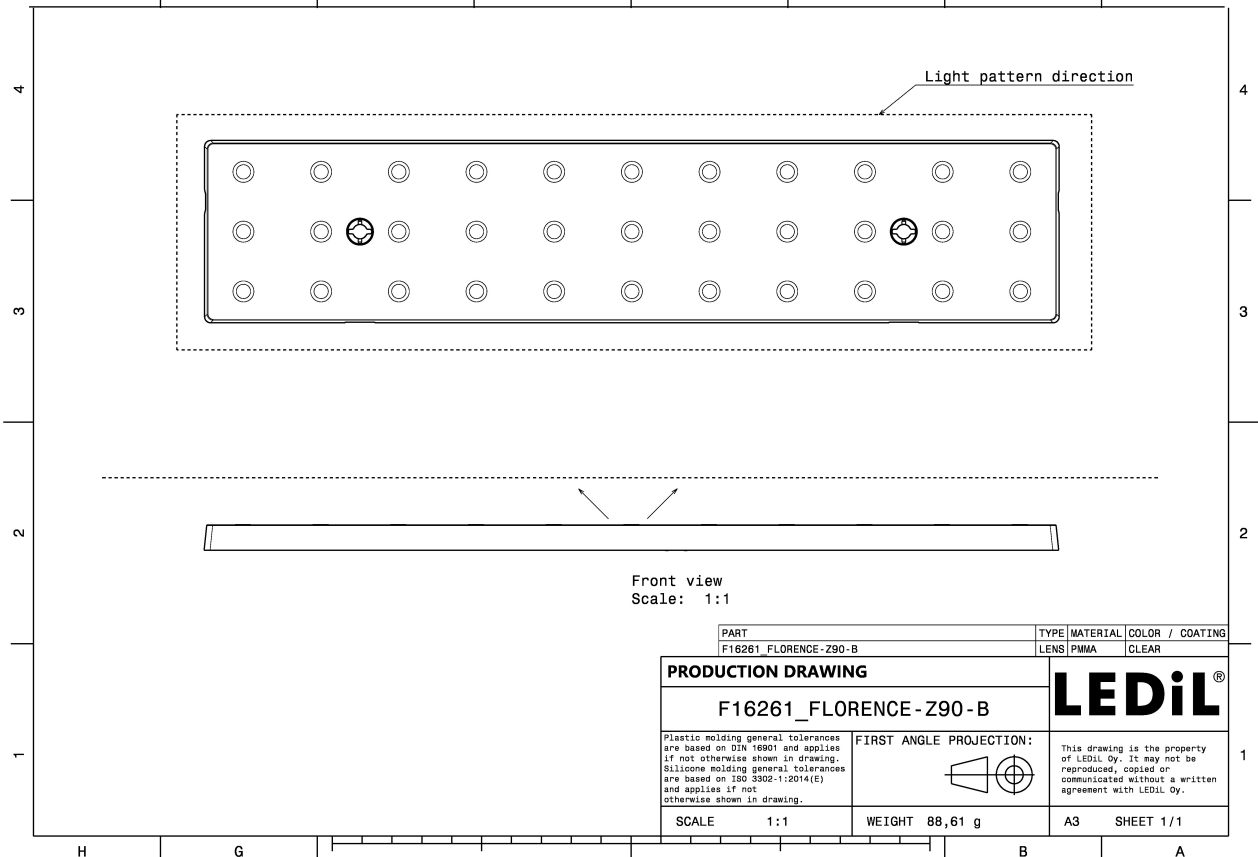
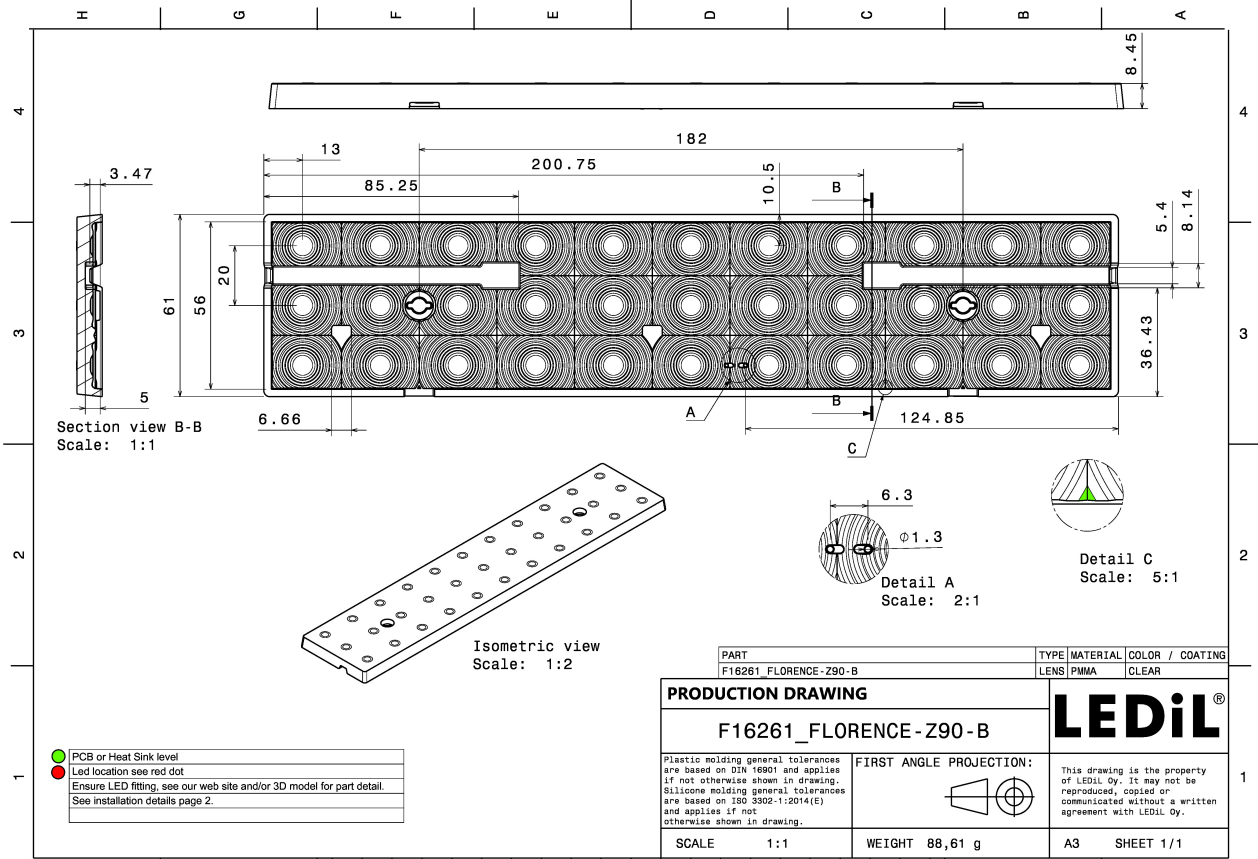
MATERIALS:

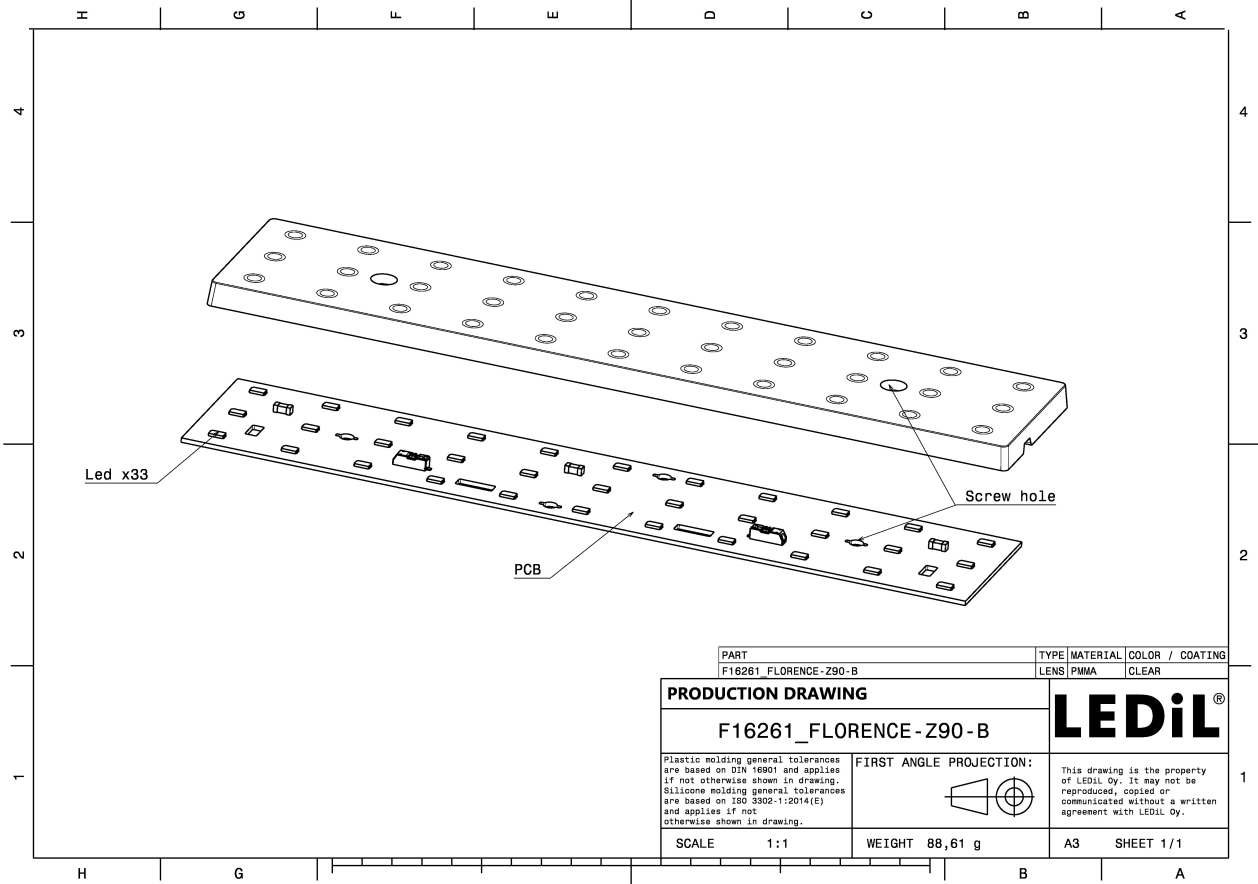
Component	Type	Material	Colour	Finish
FLORENCE-Z90-B	Linear lens	PMMA	clear	

ORDERING INFORMATION:

Component	Qty in box	MOQ	MPQ	Box weight (kg)
F16261_FLORENCE-Z90-B » Box size: 398 x 298 x 140 mm	72	18	6	7.8







PART		TYPE	MATERIAL	COLOR / COATING
F16261 FLORENCE-Z90-B		LENS	PMMA	CLEAR
PRODUCTION DRAWING			LEDiL®	
F16261_FLORENCE-Z90-B				
<small>Plastic molding general tolerances are based on DIN 16901 and applies if not otherwise shown in drawing. Silicone molding general tolerances are based on ISO 3302-1:2014(E) and applies if not otherwise shown in drawing.</small>		FIRST ANGLE PROJECTION: 	<small>This drawing is the property of LEDiL Oy. It may not be reproduced, copied or communicated without a written agreement with LEDiL Oy.</small>	
SCALE	1:1	WEIGHT	88,61 g	A3 SHEET 1/1

See also our general installation guide: www.ledil.com/installation_guide

OPTICAL RESULTS (MEASURED):

CREE LED

LED XH-B/G
FWHM / FWTM 95.0° / 140.0°
Efficiency 82 %
Peak intensity 0.4 cd/lm
LEDs/each optic 1
Light colour White
Required components:

LUMILEDS

LED LUXEON 3030 2D (Round LES)
FWHM / FWTM 91.0° / 132.0°
Efficiency 87 %
Peak intensity 0.4 cd/lm
LEDs/each optic 1
Light colour White
Required components:

LUMILEDS

LED LUXEON 3535 2D
FWHM / FWTM 92.0° / 135.0°
Efficiency 87 %
Peak intensity 0.4 cd/lm
LEDs/each optic 1
Light colour White
Required components:

LUMILEDS

LED LUXEON 3535L HE
FWHM / FWTM 92.0° / 139.0°
Efficiency 93 %
Peak intensity 0.4 cd/lm
LEDs/each optic 1
Light colour White
Required components:

OPTICAL RESULTS (MEASURED):

LUMILEDS

LED LUXEON XR-3535L (L202 - xxxx033C30001)
FWHM / FWTM 91.0° / 134.0°
Efficiency 93 %
Peak intensity 0.4 cd/lm
LEDs/each optic 1
Light colour White
Required components:

LUMINUS

LED MP-2016
FWHM / FWTM 90.0° / 140.0°
Efficiency 91 %
Peak intensity 0.4 cd/lm
LEDs/each optic 1
Light colour White
Required components:

NICHIA

LED NF2x757D
FWHM / FWTM 92.0° / 134.0°
Efficiency 90 %
Peak intensity 0.4 cd/lm
LEDs/each optic 1
Light colour White
Required components:

OSRAM

LED PLG2-BAR-1100-xxx-280x55-DC
FWHM / FWTM 92.0° / 138.0°
Efficiency 92 %
Peak intensity 0.4 cd/lm
LEDs/each optic 1
Light colour White
Required components:

OPTICAL RESULTS (MEASURED):

OSRAM

Opto Semiconductors

LED Duris E5
FWHM / FWTM 92.0° / 135.0°
Efficiency 88 %
Peak intensity 0.4 cd/lm
LEDs/each optic 1
Light colour White
Required components:

OSRAM

Opto Semiconductors

LED Duris S2
FWHM / FWTM 95.0° / 165.0°
Efficiency 90 %
Peak intensity 0.4 cd/lm
LEDs/each optic 1
Light colour White
Required components:

OSRAM

Opto Semiconductors

LED Duris S5 (Single chip)
FWHM / FWTM 91.0° / 133.0°
Efficiency 88 %
Peak intensity 0.4 cd/lm
LEDs/each optic 1
Light colour White
Required components:

OSRAM

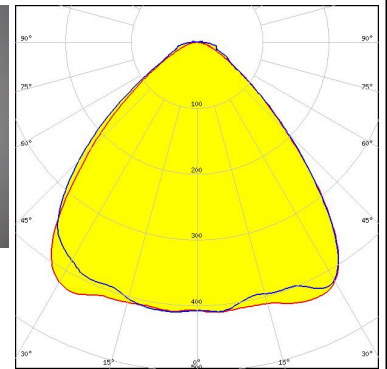
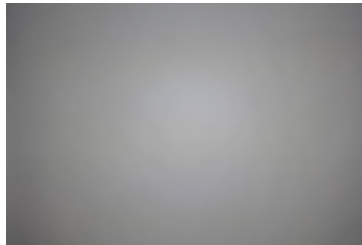
Opto Semiconductors

LED OSCONIQ P 2226
FWHM / FWTM 94.0° / 140.0°
Efficiency 83 %
Peak intensity 0.4 cd/lm
LEDs/each optic 1
Light colour White
Required components:

OPTICAL RESULTS (MEASURED):

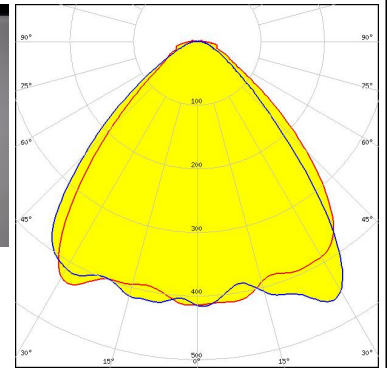
PHILIPS

LED Fortimo LED Line 1ft 1100lm 3R HV4
 FWHM / FWTM 91.0° / 127.0°
 Efficiency 94 %
 Peak intensity 0.4 cd/lm
 LEDs/each optic 1
 Light colour White
 Required components:



PHILIPS

LED Fortimo LED Line 1ft 650lm 3R HV4 & LV4
 FWHM / FWTM 87.0° / 123.0°
 Efficiency 94 %
 Peak intensity 0.5 cd/lm
 LEDs/each optic 1
 Light colour White
 Required components:



SAMSUNG

LED LM231 A/B
 FWHM / FWTM 91.0° / 134.0°
 Efficiency 88 %
 Peak intensity 0.4 cd/lm
 LEDs/each optic 1
 Light colour White
 Required components:

SAMSUNG

LED LM561B
 FWHM / FWTM 86.0° / 133.0°
 Efficiency 85 %
 Peak intensity 0.4 cd/lm
 LEDs/each optic 1
 Light colour White
 Required components:

OPTICAL RESULTS (MEASURED):

SAMSUNG

LED LM561B Plus
FWHM / FWTM 92.0° / 141.0°
Efficiency 93 %
Peak intensity 0.4 cd/m
LEDs/each optic 1
Light colour White
Required components:

SAMSUNG

LED LM561C
FWHM / FWTM 92.0° / 140.0°
Efficiency 93 %
Peak intensity 0.4 cd/m
LEDs/each optic 1
Light colour White
Required components:

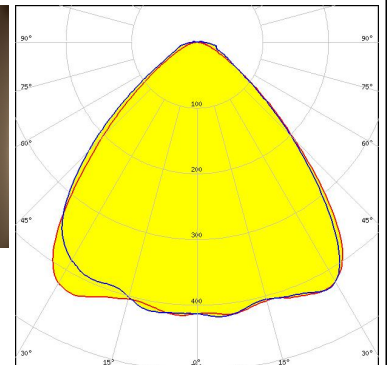
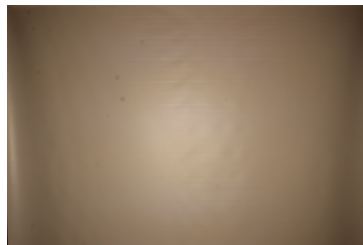
SAMSUNG

LED LT-R286A
FWHM / FWTM 93.0° / 140.0°
Efficiency 93 %
Peak intensity 0.4 cd/m
LEDs/each optic 1
Light colour White
Required components:



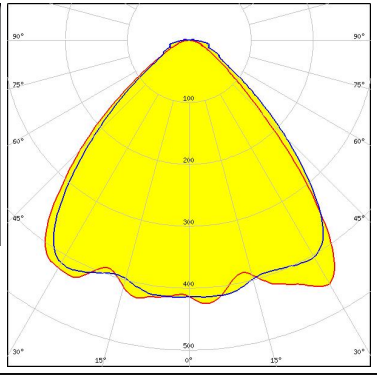
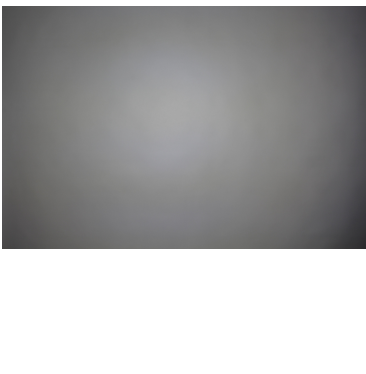
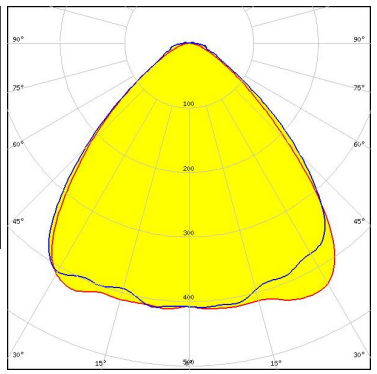


SEOUL SEMICONDUCTOR

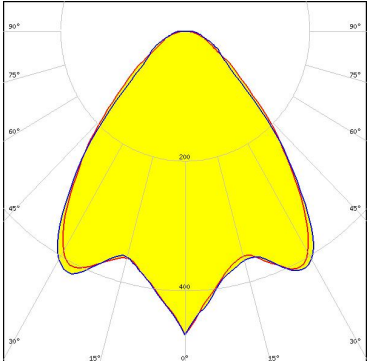
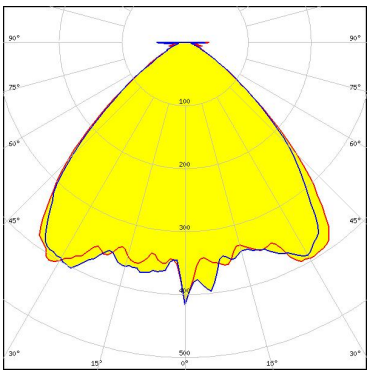
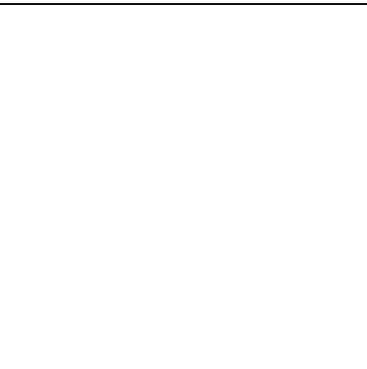
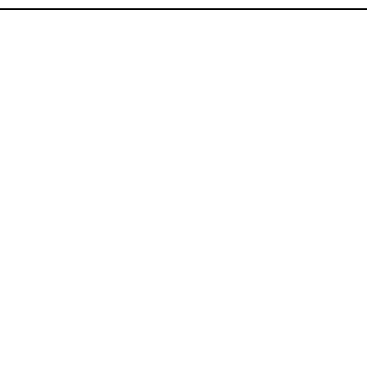
LED SEOUL 5630C
FWHM / FWTM 91.0° / 129.0°
Efficiency 94 %
Peak intensity 0.4 cd/m
LEDs/each optic 1
Light colour White
Required components:



OPTICAL RESULTS (MEASURED):

<p> SEOUL SEMICONDUCTOR</p> <p>LED SEOUL DC 3030</p> <p>FWHM / FWTM 91.0° / 123.0 + 135.0°</p> <p>Efficiency 94 %</p> <p>Peak intensity 0.5 cd/lm</p> <p>LEDs/each optic 1</p> <p>Light colour White</p> <p>Required components:</p>		
<p>TRIDONIC</p> <p>LED LLE G2 55x280mm 2000lm</p> <p>FWHM / FWTM 92.0°</p> <p>Efficiency 94 %</p> <p>Peak intensity 0.4 cd/lm</p> <p>LEDs/each optic 1</p> <p>Light colour White</p> <p>Required components:</p>		

OPTICAL RESULTS (SIMULATED):

<p>CREE → LED</p> <p>LED J Series 2835 FWHM / FWTM 84.0° / 130.0° Efficiency 86 % Peak intensity 0.5 cd/lm LEDs/each optic 1 Light colour White Required components:</p>	
<p>CREE → LED</p> <p>LED XP-G3 FWHM / FWTM 95.0° / 126.0° Efficiency 92 % Peak intensity 0.4 cd/lm LEDs/each optic 1 Light colour White Required components:</p>	
<p>NICHIA</p> <p>LED NF2x757G FWHM / FWTM 90.0° / 146.0° Efficiency 80 % Peak intensity 0.4 cd/lm LEDs/each optic 1 Light colour White Required components:</p>	
<p>NICHIA</p> <p>LED NVSxE21A FWHM / FWTM 90.0° / 163.0° Efficiency 94 % Peak intensity 0.4 cd/lm LEDs/each optic 1 Light colour White Required components:</p>	

OPTICAL RESULTS (SIMULATED):



GENERAL INFORMATION:

NOTE: The typical beam angle will be changed by different color, chip size and chip position tolerance. The typical total beam angle is the full angle measured where the luminous intensity is half of the peak value.

MATERIALS:

As part of our continuous research and improvement processes, and to ensure the best possible quality and availability of our products, LEDiL reserves the right to change material grades without notice.

PRODUCT DATA USER AGREEMENT AND DISCLAIMER:

The measured data in the provided downloadable LEDiL Product Datasheets and Mechanical 2D-Drawings is rounded and provided as reference for planning. LEDiL Oy's optical specifications have been verified by conducting performance testing of the products in accordance with the company's quality system. The reported data are averaged results of multiple measurements with typical variation. LEDiL Oy reserves the right to without prior notification make changes and improvements to its products.

LEDiL Oy assumes neither warranty, nor guarantee nor any other liability of any kind for the contents and correctness of the provided data. The provided data has been generated with highest diligence but the provided data may in reality not represent the complete possible variation range of all intrinsic parameters. Therefore, in certain cases a deviation from the provided data could occur.

LEDiL Oy reserves the right to undertake technical changes of its products without further notification which could lead to changes in the provided data. LEDiL Oy assumes no liability of any kind for the possible deviation from any provided data or any other damage resulting from the usage of the provided data.

The user agrees to this disclaimer and user agreement with the download or usage of the provided files.

LEDiL Oy

Joensuunkatu 13
FI-24240 SALO
Finland

LEDiL Inc.

228 West Page Street
Suite D
Sycamore IL 60178
USA

Ledil Optics Technology (Shenzhen) Co., Ltd.

405 , Block B
Casic Motor Building
Shenzhen 518057
P.R.CHINA

Local sales and technical support

[www.ledil.com/
where_to_buy](http://www.ledil.com/where_to_buy)

Shipping locations

Salo, Finland
Hong Kong, China

Distribution Partners

[www.ledil.com/
where_to_buy](http://www.ledil.com/where_to_buy)