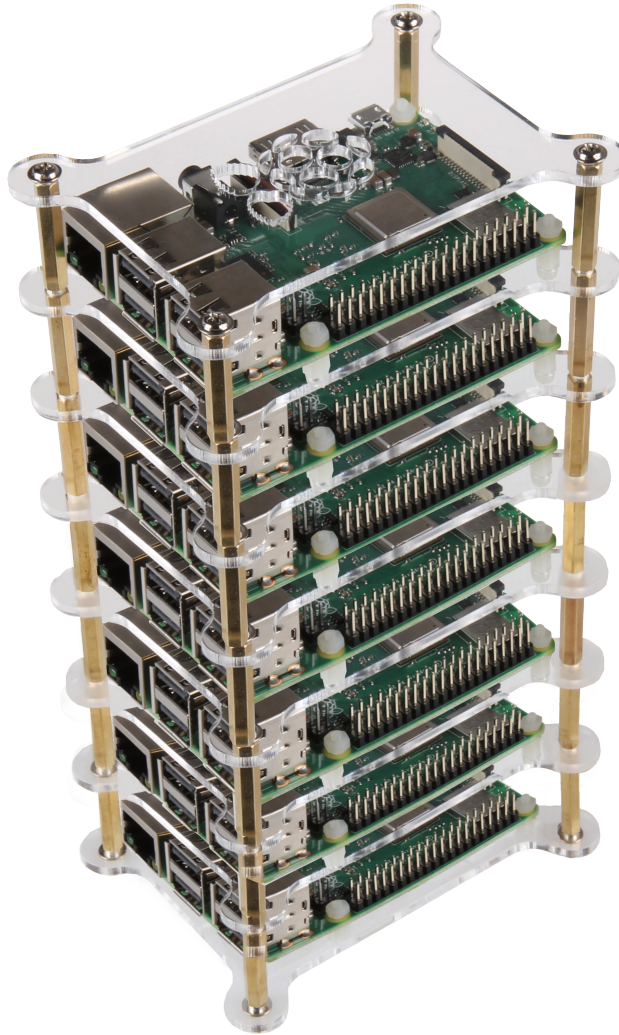


RB-CASE+19

Transparent tower case for Raspberry Pi



1. GENERAL INFORMATION

Dear customer,

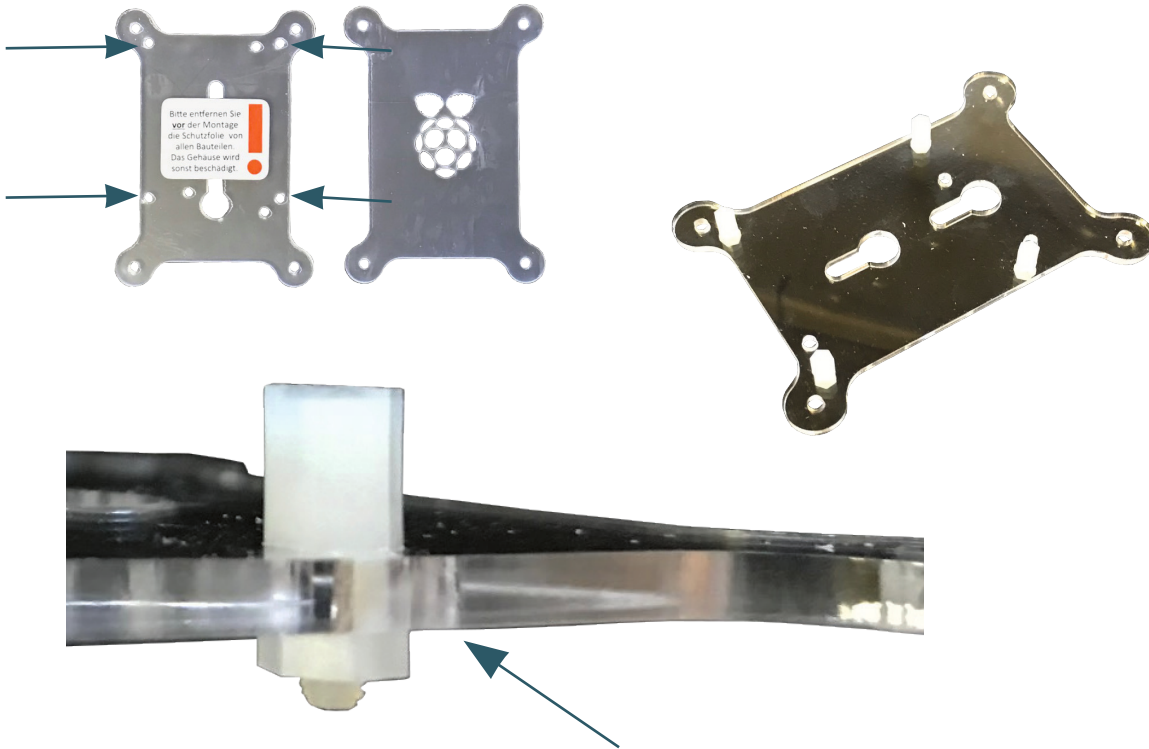
thank you for choosing our product. in the following, we will show you how to use your product.

Should you encounter any unexpected problems during use, please do not hesitate to contact us.

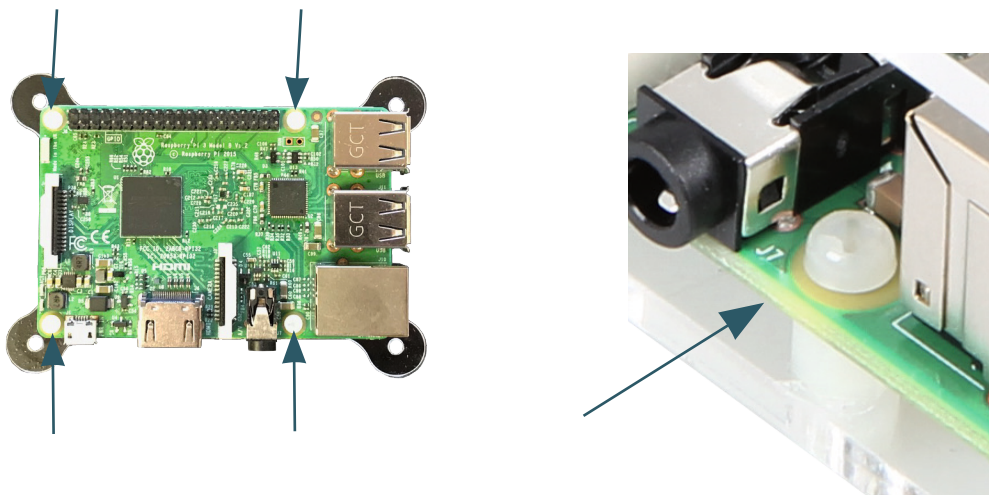
This case is perfect for all maker and handcraft enthusiasts because it protects the Raspberry during experiments and test setups.

2. ASSEMBLY

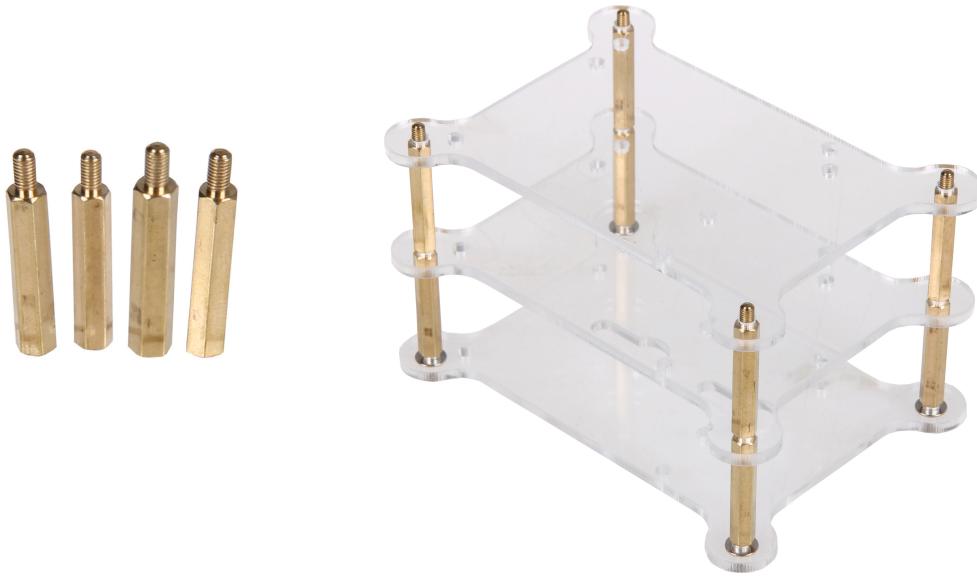
First of all, you should remove the protective film from both sides gently. After that four synthetic spacers must be pinned and attached with synthetic nuts.



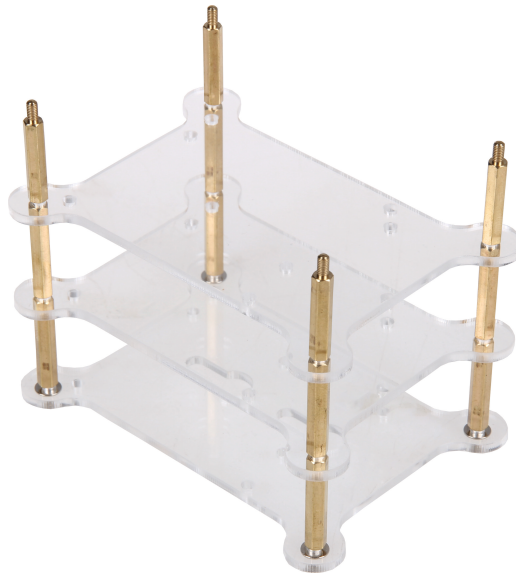
Now you can apply the Raspberry Pi on the spacers and screw it tight with four synthetic screws.



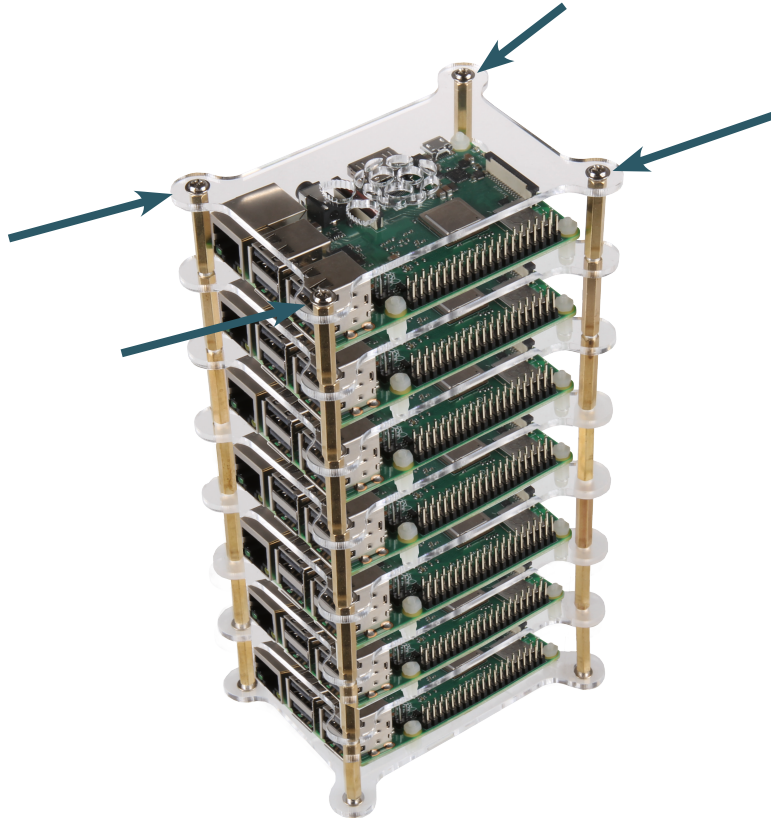
First of all, screw together the base plate (plate with wall mount) and the spacers with threads. You should use the spacers with threads that you can add the next plate on top of the other.



Repeat the previous steps as often as the number of Raspberry Pis you wish to install in the case.



You can install the maximum of 7 Raspberry Pis.
Finally, you have to screw the top with the associated screws.



3. SUPPORT

If any questions remain open or problems arise after your purchase, we are available by email, telephone and ticket support system to answer these..

E-Mail: service@joy-it.net

Ticket-System: <http://support.joy-it.net>

Telephone: +49 (0)2845 98469 – 66 (10 - 17 o'clock)

For further information visit our website::

www.joy-it.net