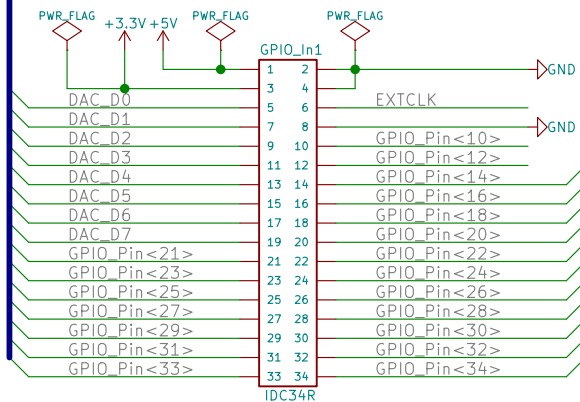
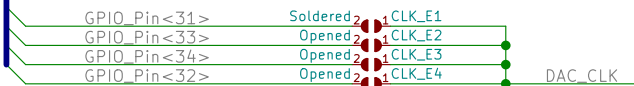


# Extension In



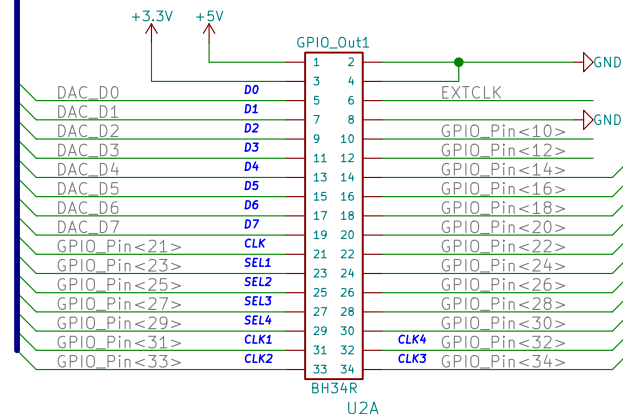
# Multi Channel Option!



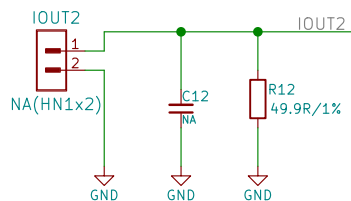
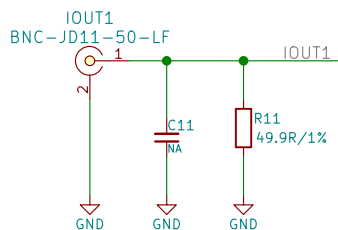
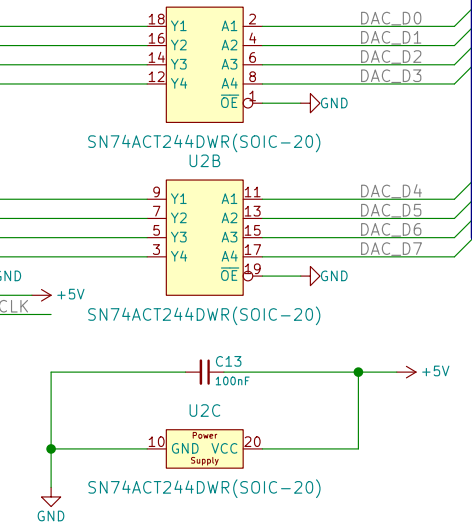
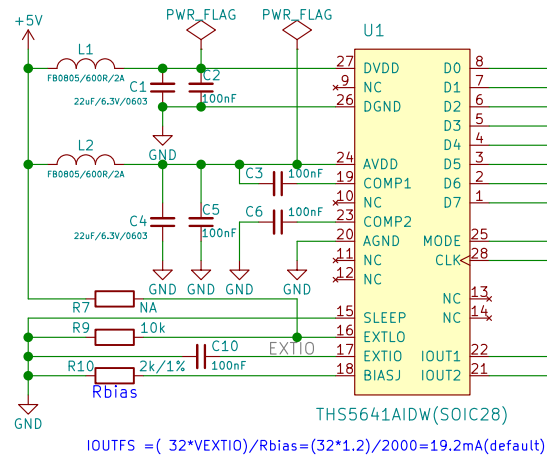
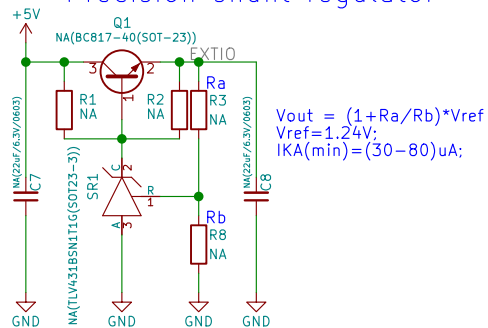
FUNCTION/MODE	MODE_0		MODE_1	
	MODE PIN CONNECTED TO GND	MODE PIN CONNECTED TO DVDD	MODE PIN CONNECTED TO GND	MODE PIN CONNECTED TO DVDD
Input code format	Binary(default)	Twos complement		

Note that the update rate is limited to 67 MSPS for a digital supply voltage DVDD of 3 V to 3.6 V. Maximum output update rate = 100MSPS when DVDD = 4.5 V to 5.5 V. Because of this, DVDD has been set to 5V and SN74ACT244DWR buffer is used for levels shifter

# Extension Out



## (Option!) Precision shunt regulator



<https://www.olimex.com/>  
**OLimeX LTD**  
 Sheet: /  
 File: ICE40-DAC\_Rev\_A.sch

<b>Title:</b>	
Size: A4	Date:
KiCad E.D.A. kicad no-vcs-found-36e590658ubuntu16.04.1	
Rev: A	Id: 1/1