



SUNNYWAY

SWE012

PN: SW19042EB78



Sunnyway Technology

Add: 1F, Building 4, No.215-99, GaoGuang Road, QingPu District, Shanghai, China

Tel: +86-021-6083 5368 Fax: +86-021-6484 2328

Email: sales@sunny-way.com Web: www.sunny-way.com

1. Electrical Specification

Standards	WiFi & BT
Frequency range (MHz)	2400~2500MHz
Peak Gain (dBi)	1~2dBi
Average Gain (dB)	-5.8~-4.7dB
VSWR	< 5.0
Return Loss	< -3.6
Efficiency (%)	26~33%
Polarization mode	Linear
Radiation pattern	Omni-Directional
Output impedance (Ω)	50
Max. Input Power(W)	25

2. Mechanical and Environmental Specification

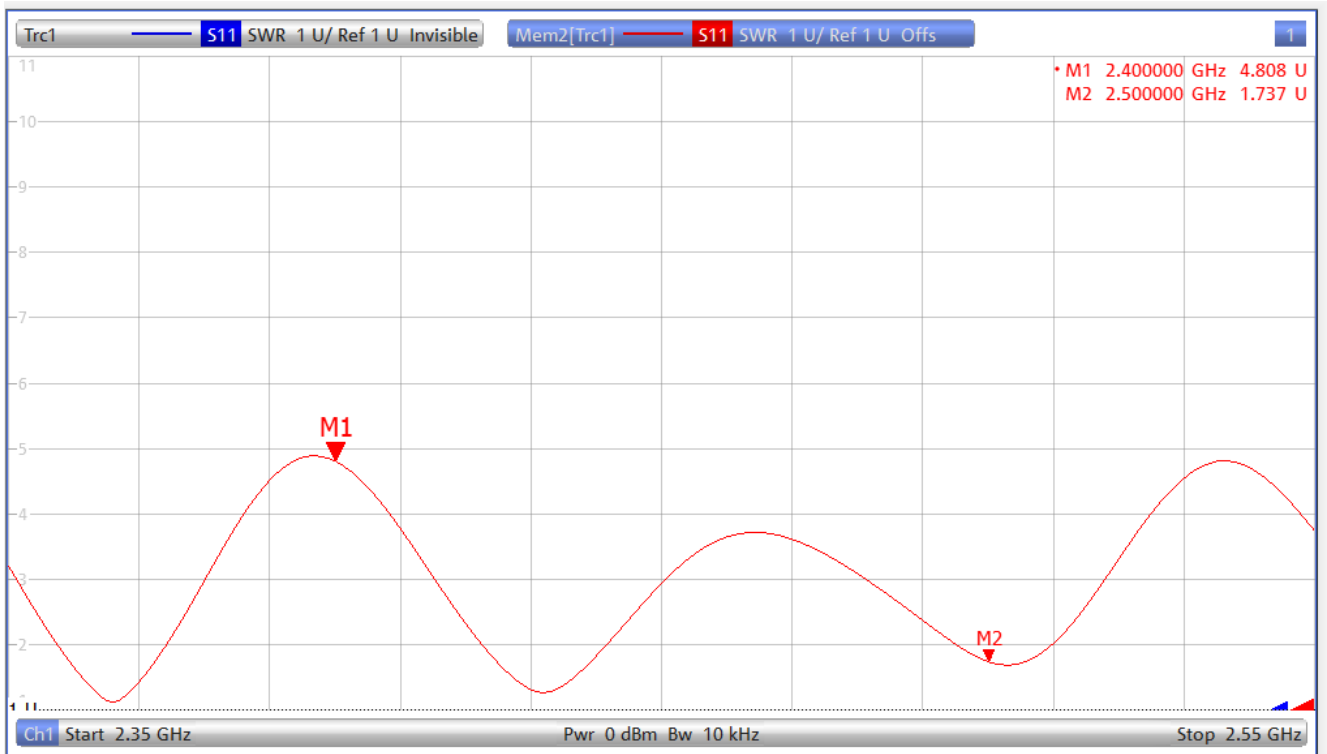
Mounting Type	Connector Mount
Connector Type	SMA (1M)
Antenna size(mm)	223X ϕ 30
Material	ABS+PC
Operating Temperature (°C)	- 40 °C ~ + 85 °C
Storage Temperature(°C)	- 40 °C ~ + 85 °C

3. Antenna parameters

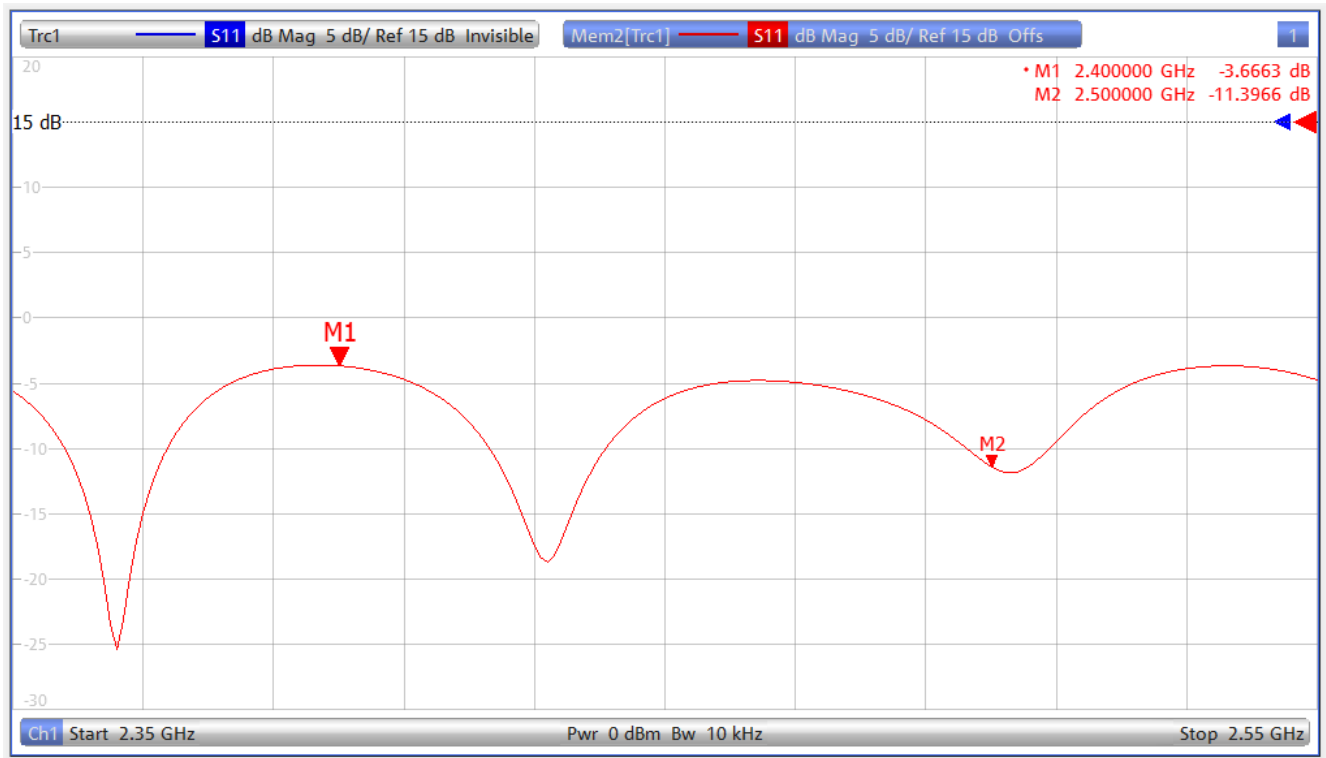
3.1 General Specification

FRE (MHz)	2400	2500
VSWR	4.80	1.73
Return Loss	-3.66	-11.39
Eff (%)	26.2	33.4
PEAK Gain (dBi)	1.30	1.91

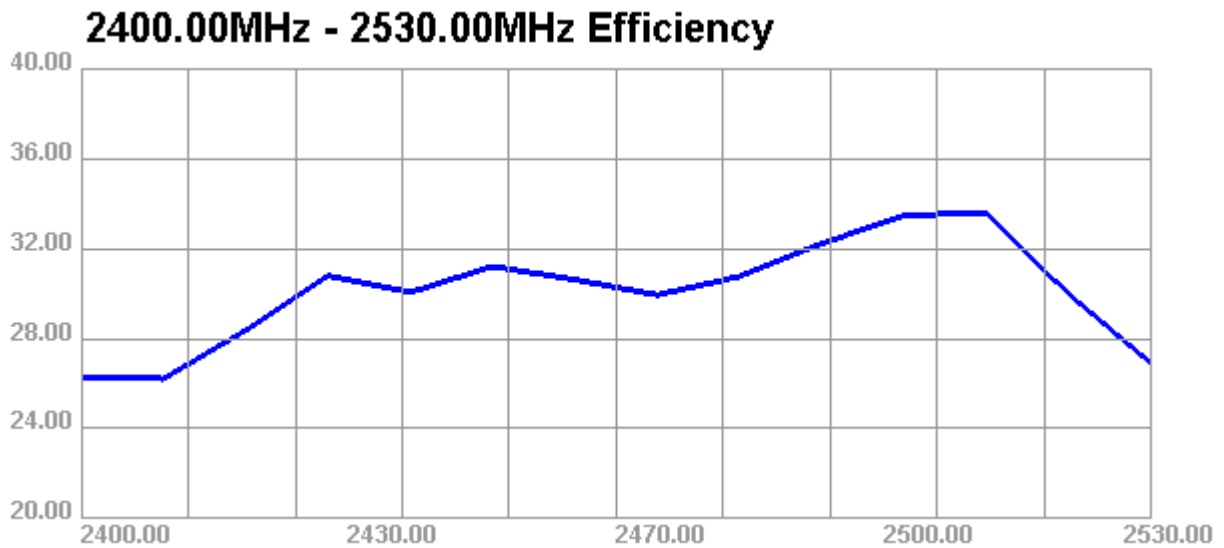
3.2 VSWR



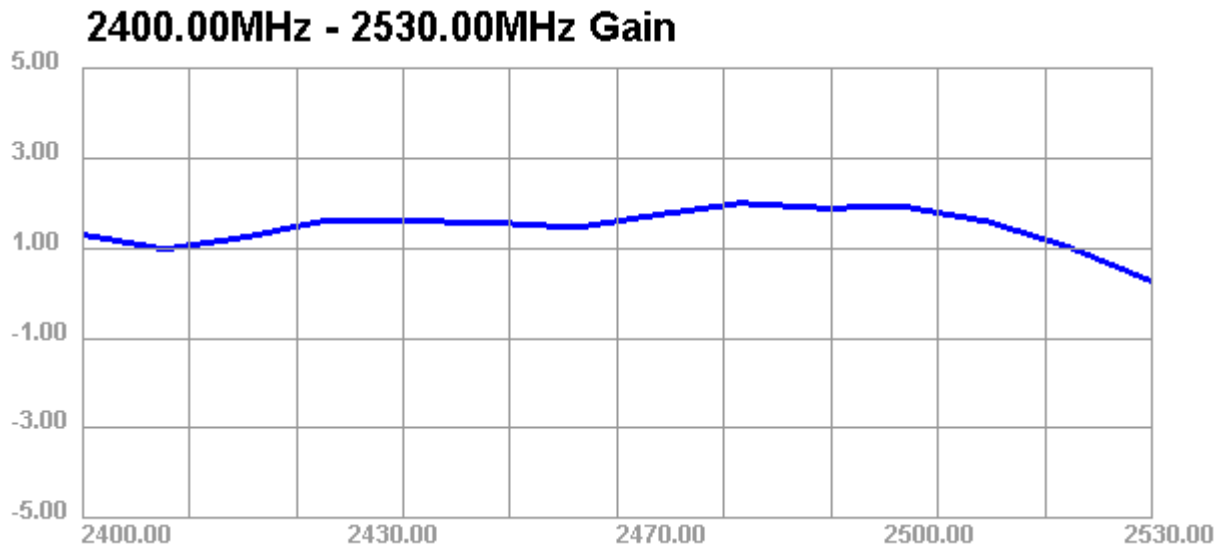
3.3 Return Loss



3.4 Efficiency

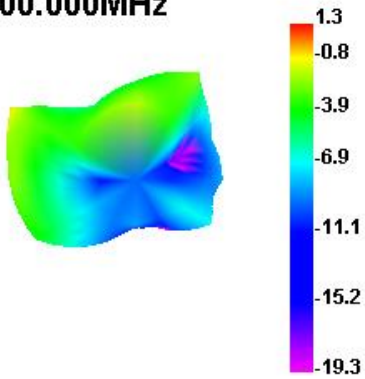


3.5 Gain

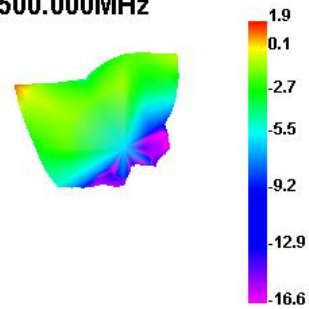


3.6 Directional Pattern

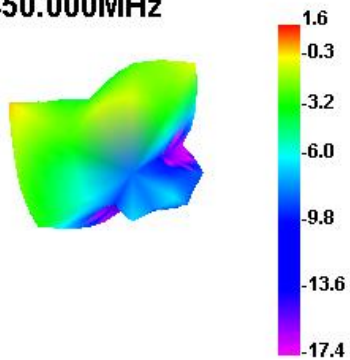
2400.000MHz



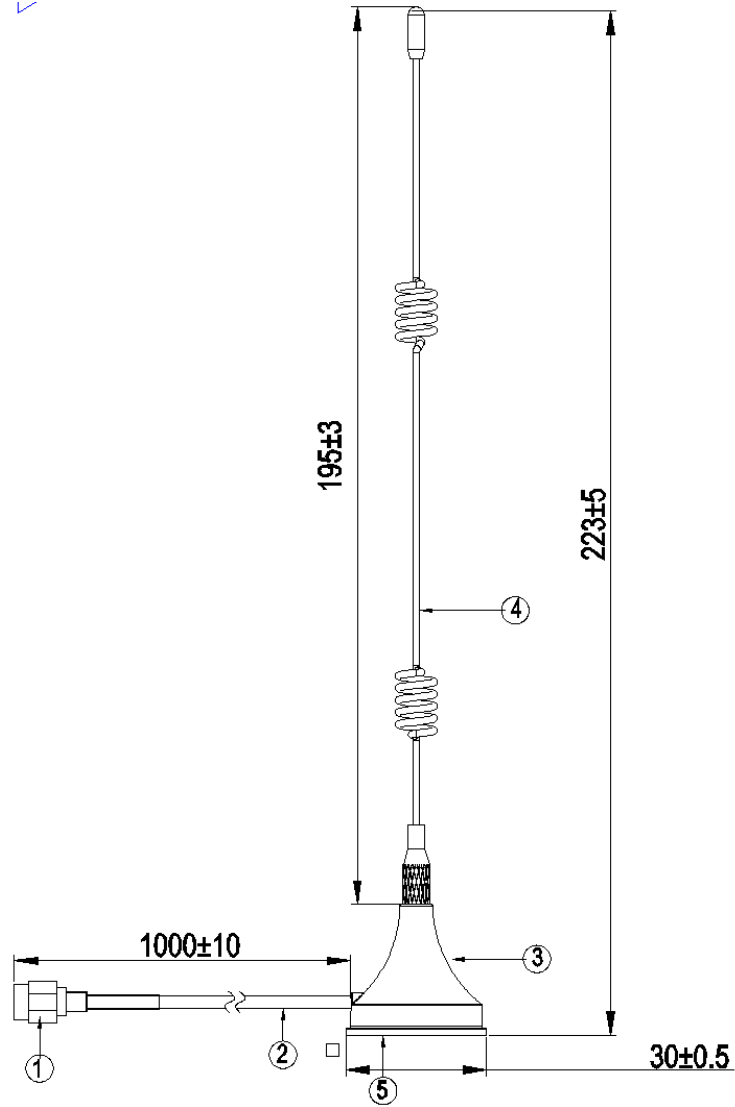
2500.000MHz



2450.000MHz



4. Antenna Drawing



5	Stickers	PC	black	1
4	A spring bar	Steel wire electrophoresis	black	1
3	base	φ30.0mm	black	1
2	RG174cable	RG174 cable, 2150mm	black	1
1	SMA	SMA-J	gold	1
Series	Component name	Specification	Color	Quantity