



SUNNYWAY

SWP007

PN: SW19054IB97



Sunnyway Technology

Add: 1F, Building 4, No.215-99, GaoGuang Road, QingPu District, Shanghai, China

Tel: +86-021-6083 5368 Fax: +86-021-6484 2328

Email: sales@sunny-way.com Web: www.sunny-way.com



1. Electrical Specification

Standard	3G/2G
Frequency range (MHz)	800~2100MHz
Peak Gain (dBi)	-1.5~2.0dBi
Average Gain (dB)	-5.7~-2.2dB
VSWR	<5.0
Return Loss	<-3.5
Efficiency (%)	27~60%
Polarization mode	Linear
Radiation pattern	Omni-Directional
Output impedance (Ω)	50
Max. Input Power(W)	5

2. Mechanical and Environmental Specification

Mounting Type	Adhesive
Adhesive Type	3M9471
Connector Type	IPEX
Antenna size(mm)	35.8*6.85*0.8mm
Material	PCB
Cable length(mm)	70mm



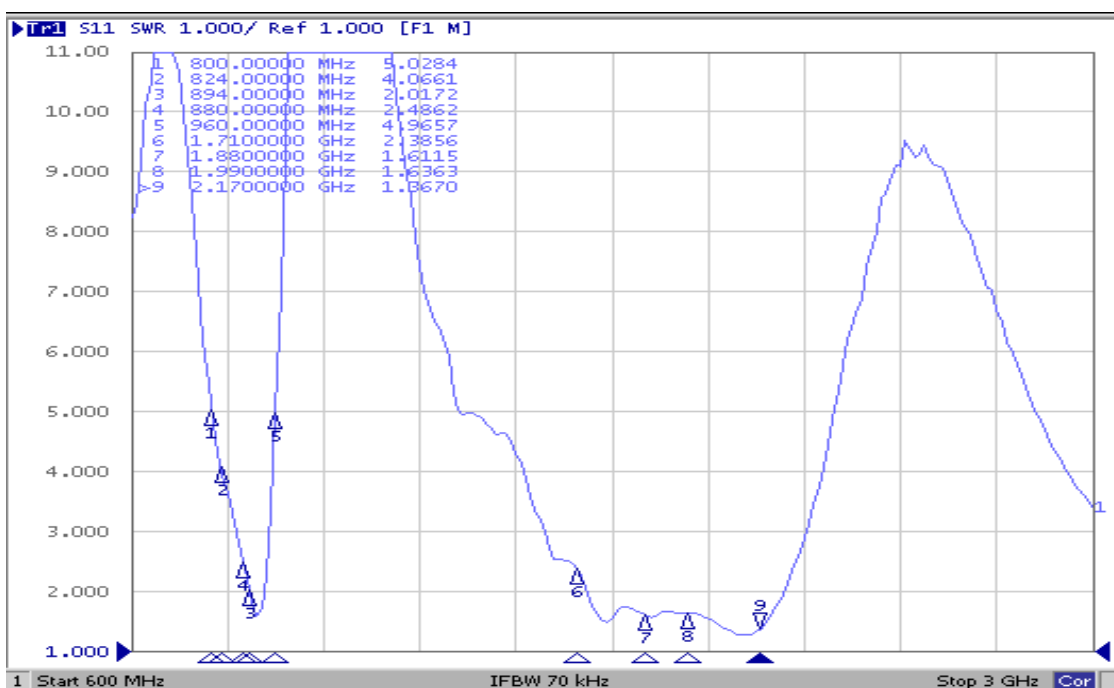
Operating Temperature (°C)	- 40 °C ~ + 85 °C
Storage Temperature(°C)	- 40 °C ~ + 85 °C

3. Antenna parameters

3.1 General Specification

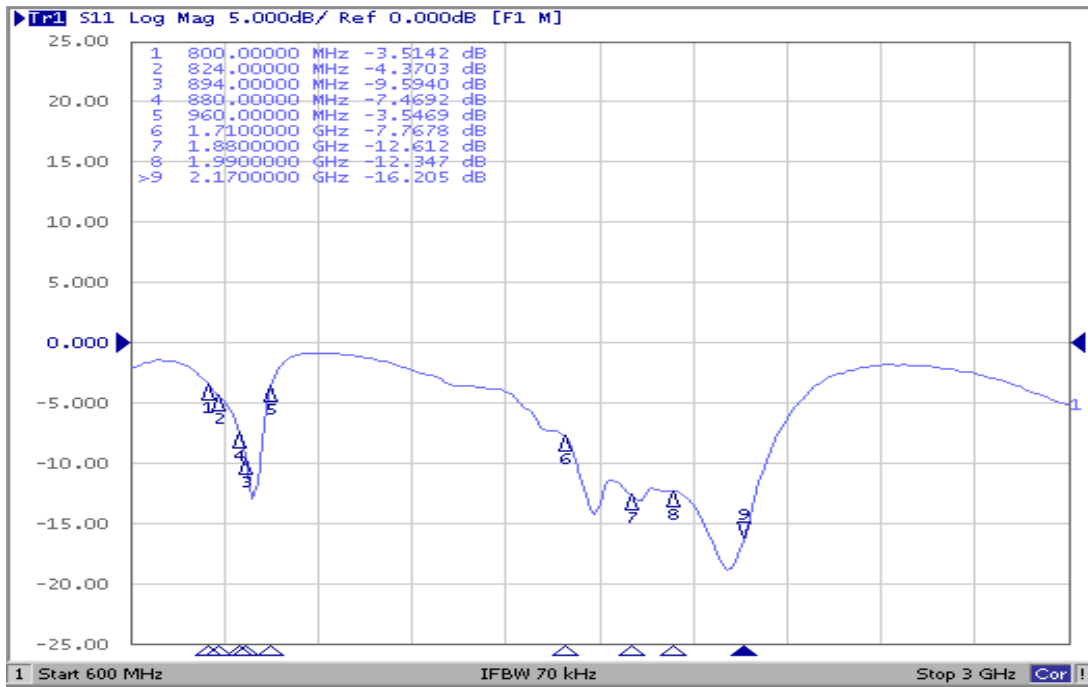
FRE (MHz)	800	824	894	880	960	1710	1880	1990	2170
VSWR	5.02	4.06	2.01	2.48	4.96	2.38	1.61	1.63	1.36
Return Loss	-3.51	-4.37	-9.59	-7.46	-3.54	-7.76	-12.61	-12.34	-16.20
Eff (%)	28.8	45.5	47.1	39.8	27.2	43.9	49.2	50.6	40.1
Average Gain(dB)	-5.4	-3.4	-3.2	-4.0	-5.7	-3.5	-3.1	-2.9	-3.9

3.2 VSWR

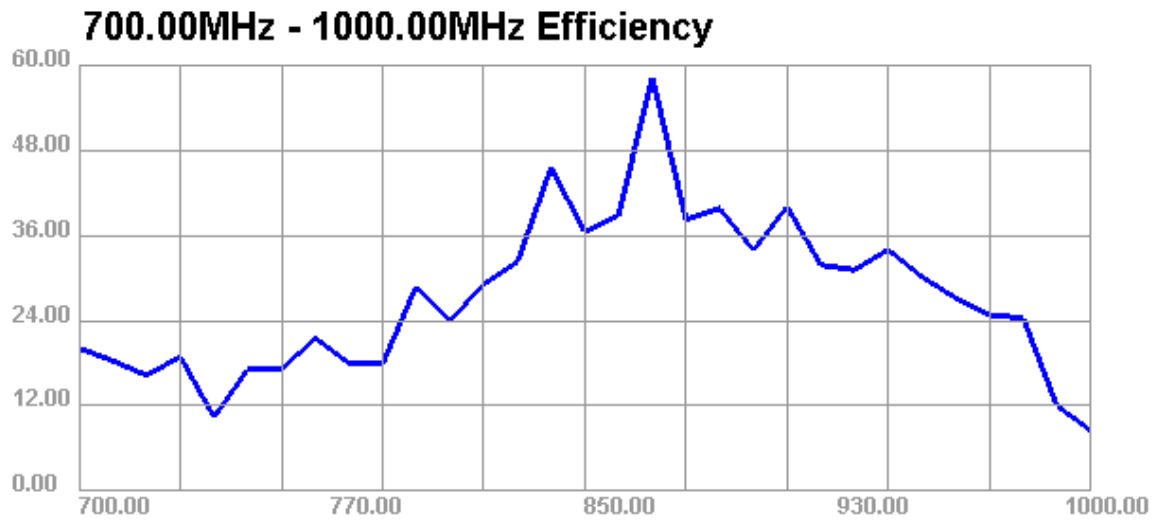




3.3 Return Loss



3.4 Efficiency



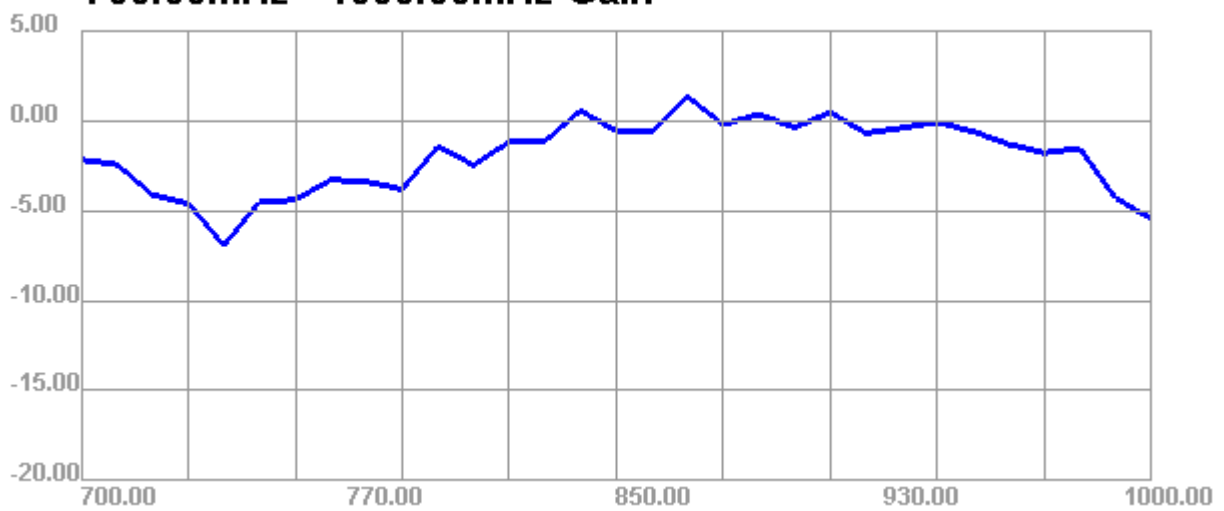


1700.00MHz - 2700.00MHz Efficiency



3.5 Gain

700.00MHz - 1000.00MHz Gain

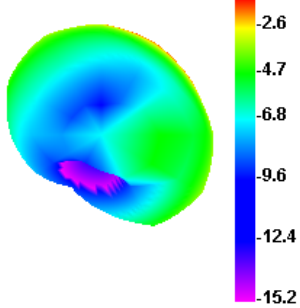


1700.00MHz - 2700.00MHz Gain

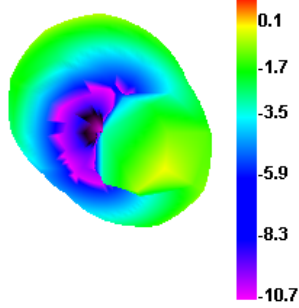


3.6 Directional pattern

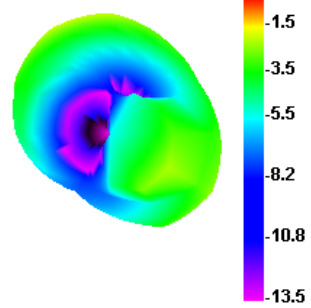
820.000MHz



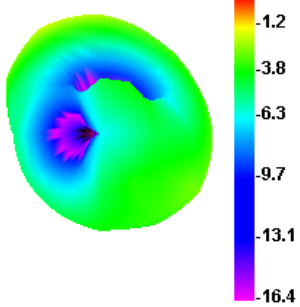
870.000MHz



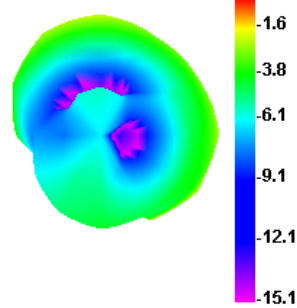
880.000MHz



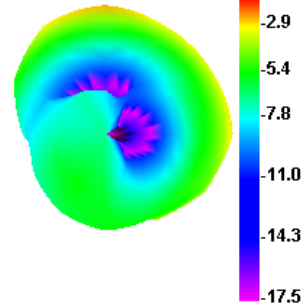
910.000MHz



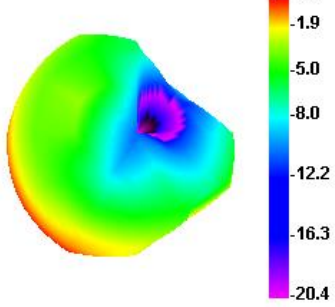
940.000MHz



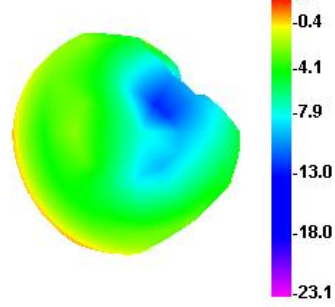
960.000MHz



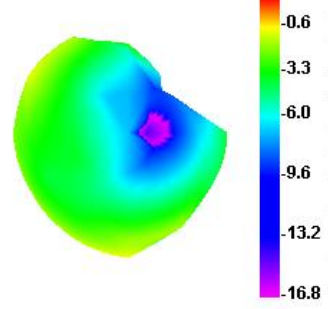
1700.000MHz



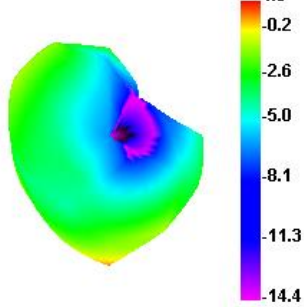
1780.000MHz



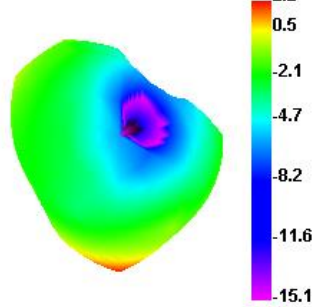
1840.000MHz



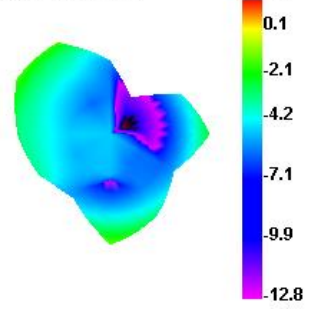
1880.000MHz



1960.000MHz



2100.000MHz





4. Antenna Drawing

