

Note:

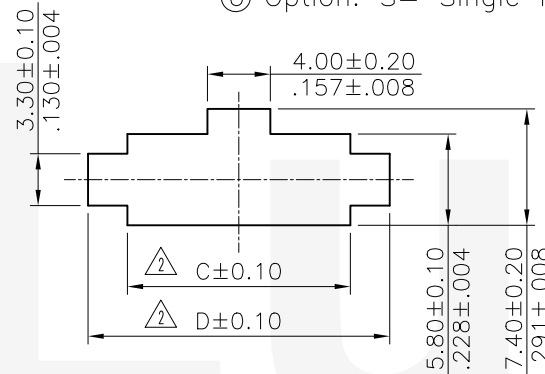
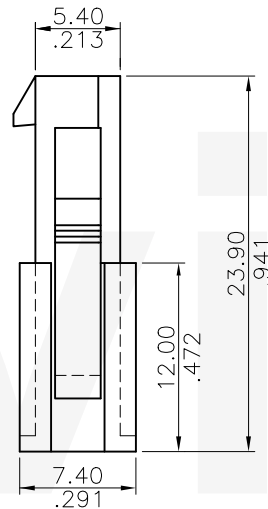
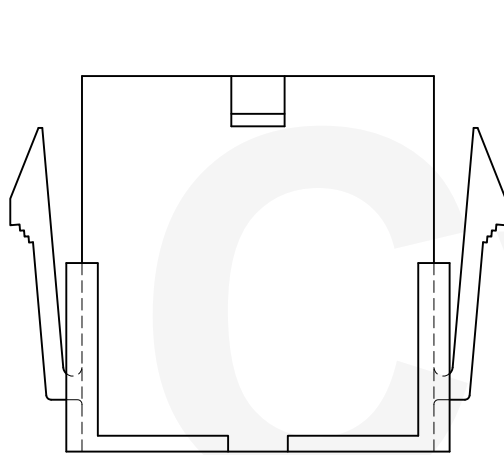
- \* Insulation material: Nylon 66, Color Nature
- \* Panel mount version is for use with 0.80mm(.031") or 2.00mm(.079") thick panels
- \* Panel should be punched in the direction of connector insertion

Ordering Code:

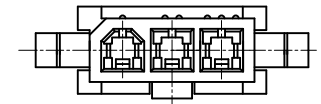
CP-01 ① ② \*\* ③ ④ ⑤ \* ⑥ S

- ① Series No.
- ② Type of Connector: 2= Plug
- ③ No of Circuits:
- ④ Plating Code: 0= Non plating
- ⑤ Variation: 0= UL 94V-2 WITH EARS  
2= UL 94V-0 WITH EARS  
1= UL 94V-2 WITHOUT EARS  
3= UL 94V-0 WITHOUT EARS

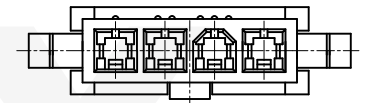
⑥ Option: S= Single Row



Panel Mounting Hole Details



3 CIRCUITS

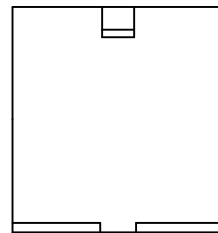
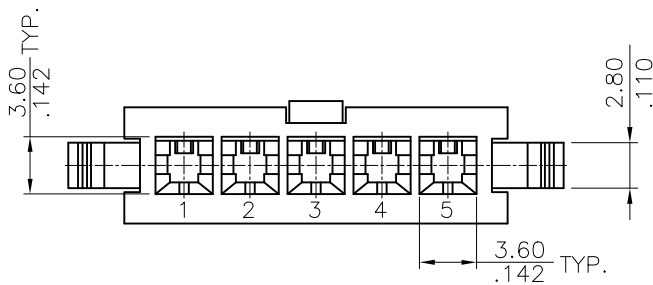


4 CIRCUITS



5 CIRCUITS

CIRCUIT PATTERN SCHEDULE



WITHOUT EARS



Circuits	Dimension			
	A	B	△ C	△ D
3	8.40(.331)	13.9(.547)	14.2(.559)	19.2(.756)
4	12.60(.496)	18.1(.713)	18.4(.724)	23.4(.921)
5	16.80(.661)	22.3(.878)	22.6(.890)	27.6(1.087)

Halogen-Free

RoHS Compliant



瀚荃股份有限公司  
CviLux Corporation

SYM	NAME	DATE	REVISIONS	APPROVED BY:	Eisley	2/06-14'	.XXX ± 0.10/.004	.XX ±
④						DATE	UNIT: mm / inch	TITLE: 4.20mm PICH PLUG CONN. (SINGLE ROW)
③							TOLERANCE UNLESS OTHERWISE SPECIFIED	MATERIAL:
②	Karen	1/29-14'	ECNT114018	DRAWN BY:	Karen	1/29-14'	.X ± 0.38/.015	.X' ± 1'
①	Eisley	7/24/08"	ECN08350	ENGINEER:	Sun	2/05-14'	.XX ± 0.25/.010	.X' ±
				CHECKED BY:	Eisley	2/06-14'		FINISH:

CVILUX CORP  
2014.02.14  
ISSUED

DRAWING NO.	CP0179SC	PART NO.	CP-012**0*S
SCALE	2 / 1	SHEET	1 OF 1