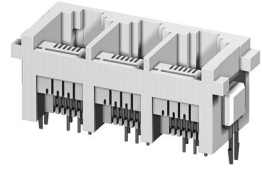
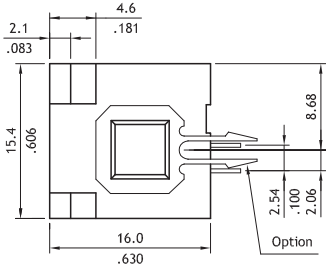
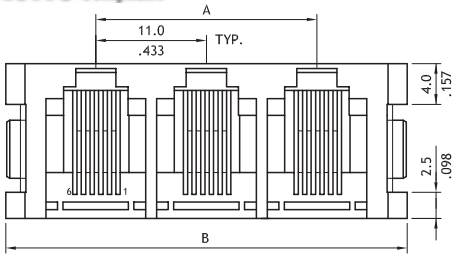


# CJ60 Series Board Mount Top Entry Telephone Gang Jacks

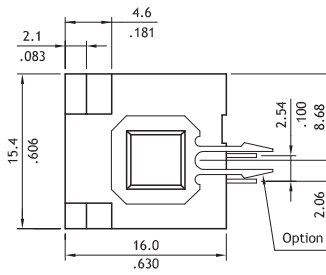
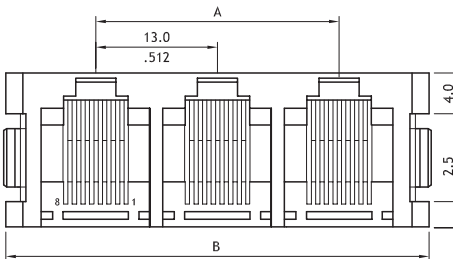
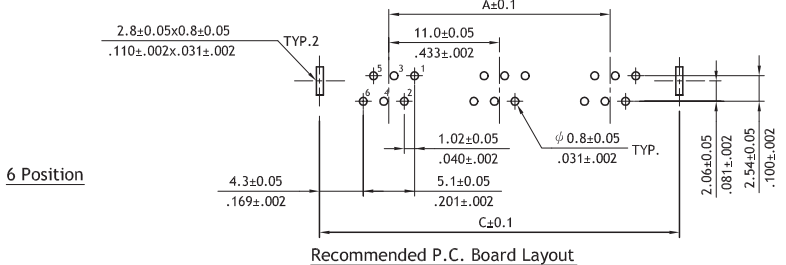
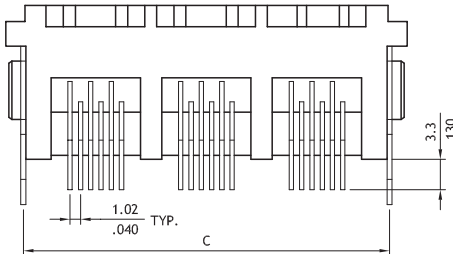
- Available 2 to 8 ports in 6 ways
- Available 1 to 4 ports in 8 ways
- With Metal pegs
- Insulator: Gray, Glass Filled Polyester
- Flammability Rating: UL 94V-0
- Cavity confirms to FCC rules and regulations PART 68, SUBPART F
- Lead Free soldering process available



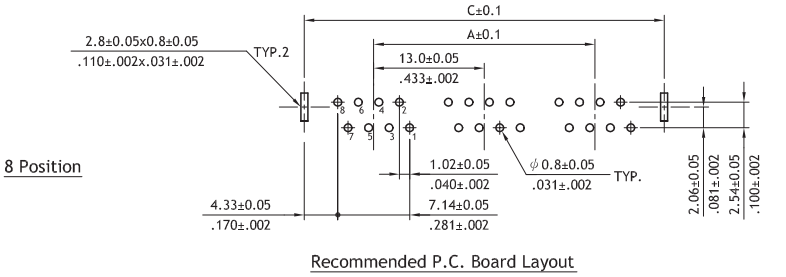
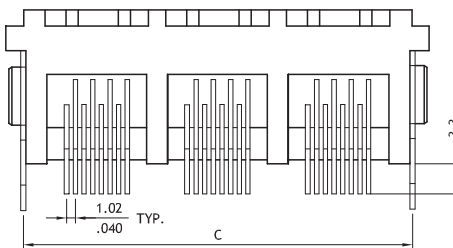
**RoHS** Compliant



Ports	Dimension		
	A	B	C
2	11.0(.433)	28.0(1.102)	24.7(.972)
3	22.0(.868)	39.0(1.535)	35.7(1.406)
4	33.0(1.299)	50.0(1.969)	46.7(1.839)
5	44.0(1.732)	61.0(2.402)	57.7(2.272)
6	55.0(2.165)	72.0(2.835)	68.7(2.705)
7	66.0(2.598)	83.0(3.268)	79.7(3.138)
8	77.0(3.030)	94.0(3.701)	90.7(3.571)



Ports	Dimension		
	A	B	C
1	-	19.3(.760)	15.8(.622)
2	13.0(.512)	32.3(1.272)	28.8(1.134)
3	26.0(1.024)	45.3(1.783)	41.8(1.646)
4	39.0(1.535)	58.3(2.295)	54.8(2.157)



## Ordering Code

**1** **2** **3** **4** **5** **6**  
**C J 6 0** **8 8** **2** **\*** **9** **0 0**

- 1** Series No.
- 2** Contacts:  
66= 6P6C , 64= 6P4C  
62= 6P2C , 88= 8P8C
- 3** Plating code:  
2= Gold flash over Nickel  
\*Optional plating available but MOQ requested
- 4** Ports: See drawing above table
- 5** Color code:  
9= Gray
- 6** PCB pegs options:  
00= With metal pegs (Standard)  
P0= Without metal peg  
\*Special options consult manufacturer