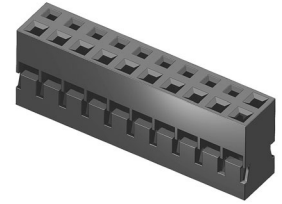
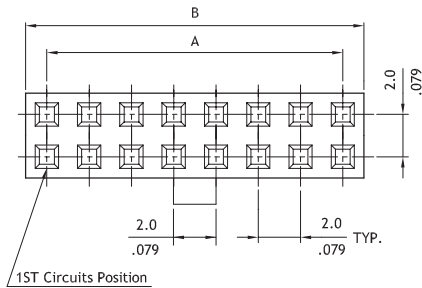


CI04 Series 2.00mm(.079") Wire to Board Connectors

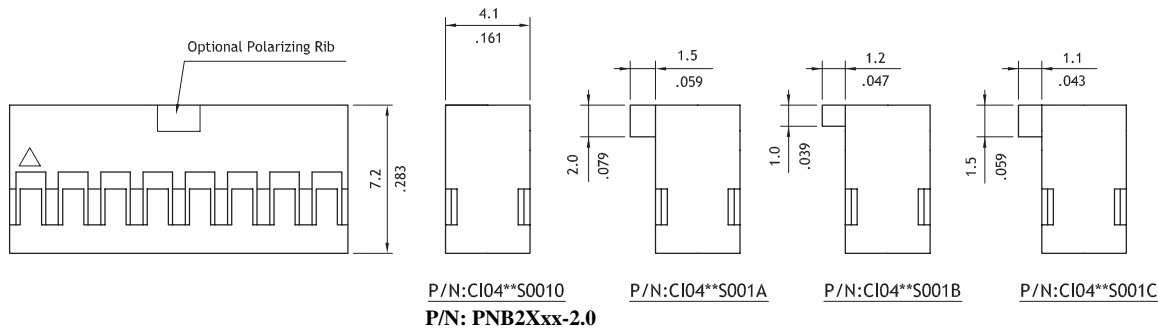
- Low profile dual row housing and with polarizing ribs
- Mate with CH71 , CH75 header
- Can be used CI03 crimp clip terminal
- Insulator: Nylon 66 UL 94V-2 , Color Black



RoHS Compliant



Circuits	Dimension		Circuits	Dimension	
	A	B		A	B
4	2.0(.079)	4.3(.169)	30	28.0(1.102)	30.2(1.189)
6	4.0(.157)	6.3(.248)	32	30.0(1.181)	32.2(1.268)
8	6.0(.236)	8.3(.327)	34	32.0(1.260)	34.2(1.346)
10	8.0(.315)	10.3(.406)	36	34.0(1.339)	36.2(1.425)
12	10.0(.394)	12.3(.484)	38	36.0(1.418)	38.2(1.504)
14	12.0(.472)	14.3(.563)	40	38.0(1.496)	40.2(1.583)
16	14.0(.551)	16.3(.642)	42	40.0(1.575)	42.2(1.661)
18	16.0(.630)	18.3(.720)	44	42.0(1.654)	44.3(1.744)
20	18.0(.709)	20.3(.799)	46	44.0(1.732)	46.2(1.819)
22	20.0(.787)	22.3(.878)	48	46.0(1.800)	48.2(1.898)
24	22.0(.866)	24.3(.957)	50	48.0(1.890)	50.3(1.980)
26	24.0(.945)	26.3(1.035)	60	58.0(2.283)	60.3(2.374)
28	26.0(1.024)	28.3(1.114)	80	78.0(3.071)	80.3(3.161)



Ordering Code

1 **2** **3** **4** **5**
CI04 50 S 001 0

- ① Series No.
- ② No. of Circuits: 04 to 40 (Standard)
42 to 80 (MOQ requested)
- ③ S= housing
- ④ Color:
001 = Color Black

- ⑤ Other options:
0 = Without polarizing rib
A = With hollow polarizing rib
B = With small polarizing rib
C = With big polarizing rib
*Special options consult manufacturer