

Notes:

- * Insulation: Glass filled polyester UL 94V-0
- * Contact: Phosphor Bronze
- * Metal peg: Brass
- * Metal peg finish: 100?" min. Tin Plated
- * For Lead Free Wave Flow Process

Ordering Code

CJ60 66 2 * 9 00
 ① ② ③ ④ ⑤ ⑥

- ① Series No.
- ② Contacts: 64=6P4C, 66=6P6C, 62=6P2C
- ③ Plating option:
 2= Gold flash plated over Nickel
 3= 0.38?"(15?"") Gold plated over 1.27?"(50?"") Nickel
- ④ Ports: see above table
- ⑤ Insulator Color: 9= Gray
- ⑥ Other options:
 00= With metal pegs (Standard)
 P0= Without metal peg

Lead Free Process RoHS Compliant

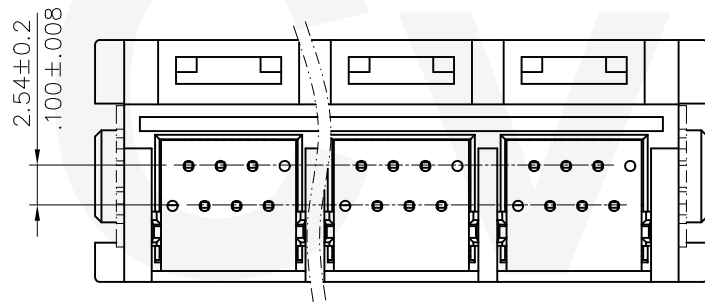
④					DATE	UNIT: mm / inch	TITLE: 6 POSITION TOP ENTRY MTEAL PEGS PCB GANG JACK
③					2/25-15'	TOLERANCE UNLESS OTHERWISE SPECIFIED	MATERIAL:
②	Karen	2/24-15'	ECNT115010/ECRT114113	DRAWN BY: Karen	2/26-15'	.X ± 0.30 / .012 X' ± 1"	
①	SUN	10/25/05	ECN05359	ENGINEER: Sun	3/02-15'	.XX ± 0.20 / .008 .X' ±	FINISH:
SYM	NAME	DATE	REVISIONS	CHECKED BY: Easley	3/02-15'	.XXX ± 0.08 / .003 .XX' ±	

CVILUX CORP
2015.03.05
ISSUED

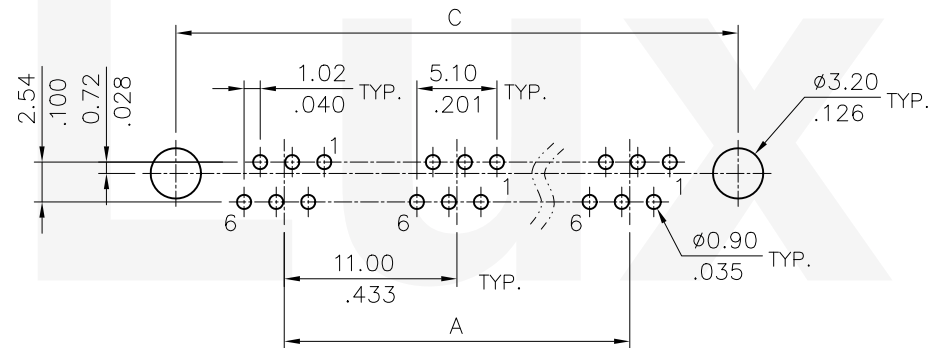
瀚荃股份有限公司
CviLux Corporation

DRAWING NO.	CJ6001SE	PART NO.	CJ606*****0
SCALE	2 / 1	SHEET	1 OF 2

Ports	Dimension		
	A	B	C
1	—	17.00(.669)	13.8(.543)
2	11.00(.433)	28.00(1.102)	24.8(.976)
3	22.00(.868)	39.00(1.535)	35.8(1.409)
4	33.00(1.299)	50.00(1.969)	46.8(1.843)
5	44.00(1.732)	61.00(2.402)	57.8(2.276)
6	55.00(2.165)	72.00(2.835)	68.8(2.709)
7	66.00(2.598)	83.00(3.268)	79.8(2.709)
8	77.00(3.030)	94.00(3.701)	90.8(3.575)



(BOTTOM VIEW)



RECOMMENDED PCB LAYOUT
 PCB THICKNESS: 1.6mm
 TOLERANCE: ±0.05mm (TOP VIEW)

Lead Free Process RoHS Compliant

4					DATE	UNIT: mm / inch	TITLE: 6 POSITION TOP ENTRY MTEAL PEGS PCB GANG JACK
3					2/25-15'	TOLERANCE UNLESS OTHERWISE SPECIFIED	MATERIAL:
2	Karen	2/24-15'	ECNT115010/ECRT114113	DRAWN BY: Karen	2/26-15'		
1	SUN	10/25/05	ECN05359	ENGINEER: Sun	3/02-15'	.XX ± 0.20 / .008	.X' ±
SYM	NAME	DATE	REVISIONS	CHECKED BY: Easley	3/02-15'	.XXX ± 0.08 / .003	.XX' ±
				APPROVED BY: Easley			FINISH:

CVILUX CORP
2015.03.05
ISSUED

瀚荃股份有限公司
CviLux Corporation

DRAWING NO.	CJ6001SE	PART NO.	CJ606*****0
SCALE	2 / 1	SHEET	2 OF 2