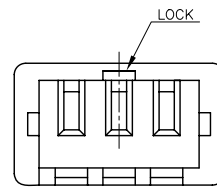
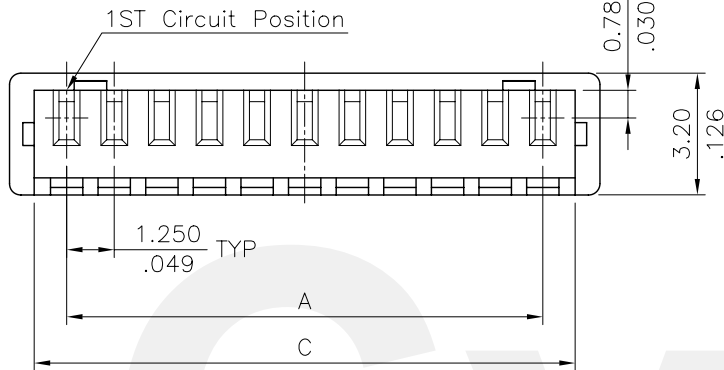


* Material: PBT UL 94V-0

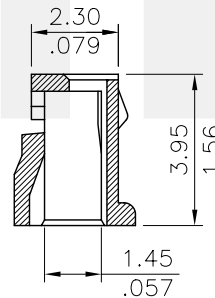
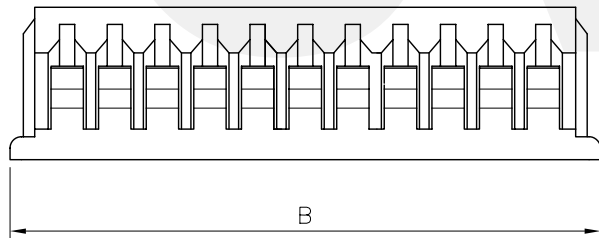
Ordering Code:

CI44 ** S00 0 0-L
 ① ② ③ ④ ⑤

- ① Series No.
- ② No. of Circuits
- ③ S00= Connector housing
- ④ Color: 0= Color Nature
- ⑤ Other option: 0= High mating & unmating force
0-L= Low mating & unmating force




FOR 2 & 3 PIN卡勾位置



| Circuits | Dimension | | |
|----------|-------------|-------------|-------------|
| | A | B | C |
| 2 | 1.25(.049) | 4.25(.167) | 2.95(.116) |
| 3 | 2.50(.098) | 5.5(.217) | 4.20(.165) |
| 4 | 3.75(.148) | 6.75(.265) | 5.45(.215) |
| 5 | 5.00(.197) | 8.0(.315) | 6.70(.264) |
| 6 | 6.25(.246) | 9.25(.364) | 7.95(.313) |
| 7 | 7.50(.295) | 10.5(.413) | 9.20(.362) |
| 8 | 8.75(.344) | 11.75(.463) | 10.45(.411) |
| 9 | 10.00(.394) | 13.0(.512) | 11.70(.461) |
| 10 | 11.25(.443) | 14.25(.561) | 12.95(.510) |
| 11 | 12.50(.492) | 15.5(.610) | 14.20(.559) |
| 12 | 13.75(.541) | 16.75(.659) | 15.45(.608) |
| 13 | 15.00(.591) | 18.0(.709) | 16.70(.657) |
| 14 | 16.25(.640) | 19.25(.758) | 17.95(.707) |
| 15 | 17.50(.689) | 20.5(.807) | 19.20(.756) |
| 16 | 18.75(.719) | 21.75(.856) | 20.45(.805) |

CVILUX.XORP
 2008.08.05
 ISSUED

RoHS Compliant

| | | | | | | | | |
|-----|-------|-----------|---------------------|-------------------|----------|---|--|--|
| ④ | Sun | 7/25-08' | ECR08087-1/ECN08354 | | DATE | UNIT: mm / inch | TITLE: 1.25MM(.049") CRIMP TERMINAL HOUSING |  瀚荃股份有限公司 CviLux Corporation |
| ③ | Eager | 08/23-07' | ECR07108-0/ECN07338 | DRAWN BY: Sun | 7/25-08' | TOLERANCE UNLESS OTHERWISE SPECIFIED | MATERIAL: | |
| ② | Eager | 02/13-07' | ECR07015-0/ECN07050 | ENGINEER: Eisley | 7/29-08' | .X ± 0.25/.010 .X' ± 1" | FINISH: | DRAWING NO. CI4401SH |
| ① | Jim | 7/14/06' | ECR06055-0/ECN06235 | CHECKED BY: David | 7/29-08' | .XX ± 0.15/.006 .X' ± | | PART NO. CI44**S0000 CI44**S0000-L |
| SYM | NAME | DATE | REVISIONS | APPROVED BY: Alex | 7/29-08' | .XXX ± 0.08/.003 .XX' ± | | SCALE 5 / 1 |