

# **JBC**

[www.jbctools.com](http://www.jbctools.com)

## **INSTRUCTION MANUAL**



### **T210, T245, T470**

Handles

This manual corresponds to the following references:

Precision Handles:

- T210-A
- T210-PA
- T210-NA

General Purpose Handles:

- T245-A
- T245-GA
- T245-PA
- T245-NA

Heavy Duty Handles:

- T470-A
- T470-SA
- T470-ZA
- T470-FA
- T470-MC
- T470-NA

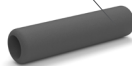
## Packing List

The following items are included:

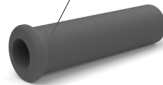


**Handle** ..... 1 unit  
*according to purchased reference*

**Green** Soft Foam Grips **T8658** for T210 + T210N  
**Blue** Soft Foam Grips **T3310** for T210P



**Green** Soft Foam Grips **T6057** for T245 + T245G  
**Blue** Soft Foam Grips **T1528** for T245P



**Grips for Handles** ..... 1 unit  
*already assembled, according purchased handle reference*

**OB1000** for T210



**OB2000**  
for T245 and T470



**Sealing Plug for Handles** ..... 1 unit  
*already assembled, according purchased handle reference*



**Manual** ..... 1 unit  
Ref. 0028966

## Features - T210 Precision Handles

T210 Handles are suitable for precision soldering jobs with medium power requirements. Due to their size, they are ideal for conventional or small SMD soldering jobs, even under a microscope.

They come with soft foam grip to ensure a better manual control of the tool and a greater comfort when working.

T210 Handles are supplied with 1.5 m cable length and work with C210 cartridges (*not included*).

### T210 Precision Handle

Ref. T210-A



### T210P Blue Grip Precision Handle

Ref. T210-PA

T210P Handles are designed with blue grip handle for easy differentiation from other handles, e.g. when leaded and unleaded solder wire are used.



### T210N Nitrogen Precision Handle

Ref. T210-NA

T210N Handles are designed to work in an oxygen-free atmosphere and so providing a better soldering quality. They offer extra heat to the solder joint and help prevent oxidation.

**Note:** JBC's GN Nitrogen Generator Module or an external nitrogen feed is needed.



\* The following soft foam grip as replacement are available: green T8658, blue T3310, black T3311.

## Features - T245 General Purpose Handles

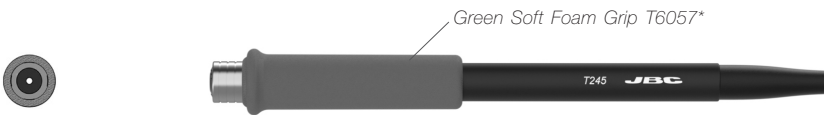
T245 Handles are suitable for both, SMD components and soldering jobs with high power requirements (e.g. ground plane soldering).

Some models come with soft foam grip to ensure a better manual control of the tool and a greater comfort when working and in addition provides thermal insulation.

T245 Handles are supplied with 1.5 m cable length and work with C245 Cartridges (*not included*).

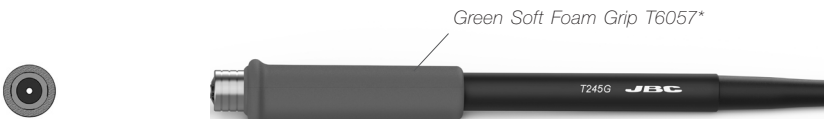
### T245 General Purpose Handle

Ref. T245-A



### T245G General Purpose Handle with Reinforced Cable

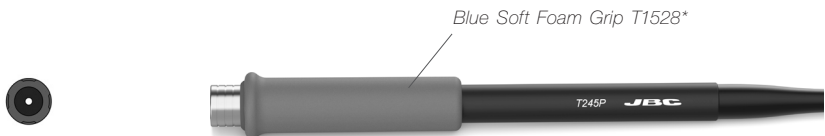
Ref. T245-GA



### T245P Blue Grip Handle

Ref. T245-PA

T245P Handles are designed with blue grip handle for easy differentiation from other handles, e.g. when leaded and leadfree solder wire are used.



*\*The following soft foam grip as replacement are available: green T6057, blue T1528, black T1530.*

## T245N Nitrogen General Purpose Handle

Ref. T245-NA

T245N Handles are designed to work in an oxygen-free atmosphere and so providing better quality soldering. They offer extra heat to the solder joint and help prevent oxidation.

**Note:** JBC's GN Nitrogen Generator Module or an external nitrogen feed is needed.



## Features - T470 Heavy Duty Handles

T470 Handles are suitable for intensive soldering jobs requiring high power delivery such as power electronics components soldering, large coax cable soldering, metal sheet soldering, etc.

They are available with grips of several shapes and materials, as well as different cable lengths (see below).

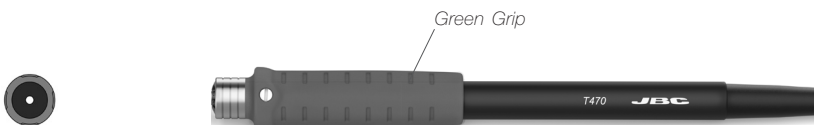
T470 Handles feature a set screw to secure the cartridge within the handpiece preventing its rotation.

**T470 Heavy Duty Handle** (1.5 m / 4.92 ft cable)

Ref. T470-A

**T470S Heavy Duty Handle** (3 m / 9.84 ft cable)

Ref. T470-SA

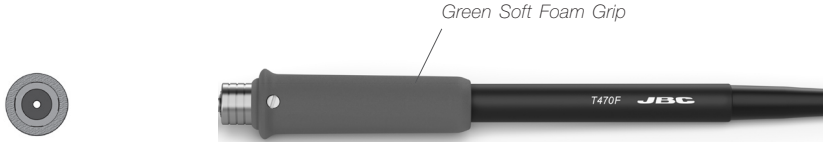


**T470F Thermal Insulator Grip HD Handle** (1.5 m / 4.92 ft cable)

Ref. T470-FA

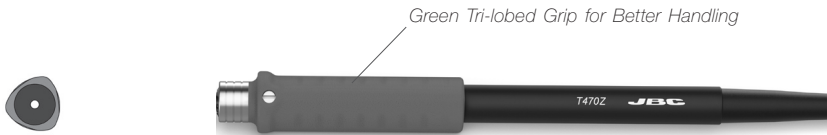
**T470M Thermal Insulator Grip HD Handle** (3 m / 9.84 ft cable)

Ref. T470-MC



**T470Z Tri-Lobed Grip HD Handle** (1.5 m / 4.92 ft cable)

Ref. T470-ZA



**T470N Nitrogen HD Handle** (1.5 m / 4.92 ft cable)

Ref. T470-NA

T470N Handles are designed to work in an oxygen-free atmosphere and so providing better quality soldering. They offer extra heat to the solder joint and help prevent oxidation.

**Note:** JBC's GN Nitrogen Generator Module or an external nitrogen feed is needed.

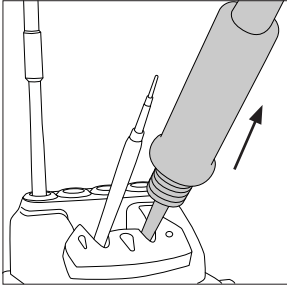


## Changing Cartridges - T210 and T245 Handles

JBC's tool stand ADS, for T210 and T245 Handles, comes with quick tip changer.

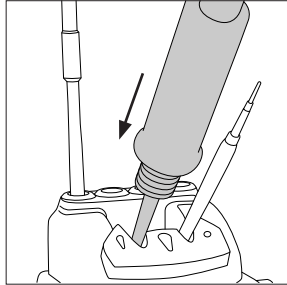
Save time and change cartridges safely without switching the station off. ⚠ Be careful, the cartridges may be hot, when placing them in the cartridge holder.

### 1. Removing



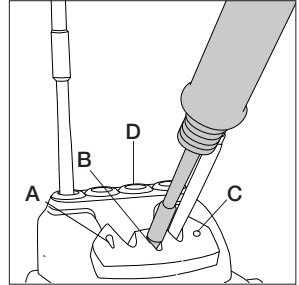
Place the cartridge in the extractor and pull the handle to remove it.

### 2. Inserting



Place the handle on top of the new cartridge and press the handle down.

### 3. Fixing



Use the holes to fix the cartridge as follows:

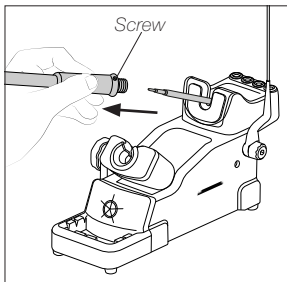
- A.** For curved C210
- B.** For C245
- C.** For straight C210
- D.** Cartridge Holder

**Note:** It is essential to insert the cartridge as far as the mark for a proper connection.



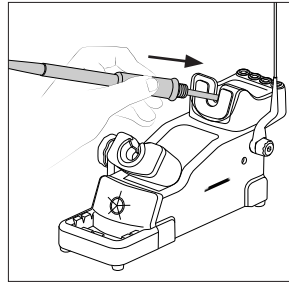
## Changing Cartridges - T470 Handles

### 1. Removing



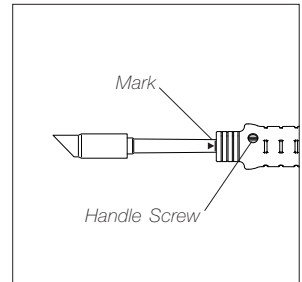
Loosen the handle screw. Place the soldering iron with the cartridge in the extractor and pull the handle to remove it.

### 2. Inserting



Place the handle on top of the new cartridge and press the handle down.

### 3. Fixing

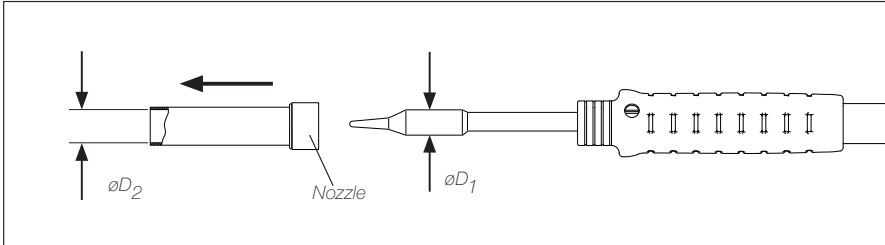


**Note:** After proper cartridge insertion as far as the mark ►, tighten the handle screw.

## Changing Nitrogen Nozzles

If the outer cartridge diameter  $D_1$  is smaller than the inner nozzle diameter  $D_2$ , the nozzle can be removed without removing the cartridge.

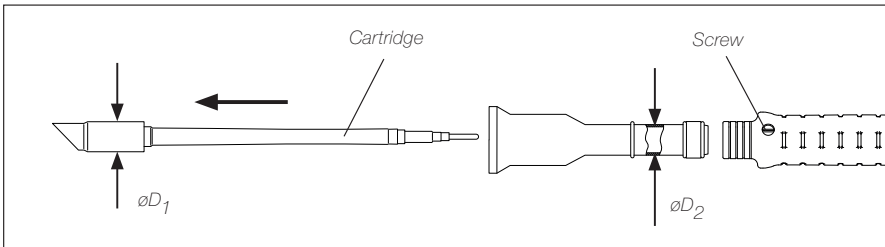
⚠ When the nozzle is hot, use pliers to remove the nozzle.



If the outer cartridge diameter  $D_1$  is larger than the inner nozzle diameter  $D_2$ . The cartridges must be removed first before the nozzle can be removed.

For T470 Handle loose the screw and remove the cartridge. Afterwards the nozzle can be removed.

⚠ When the nozzle is hot, use pliers to remove it.

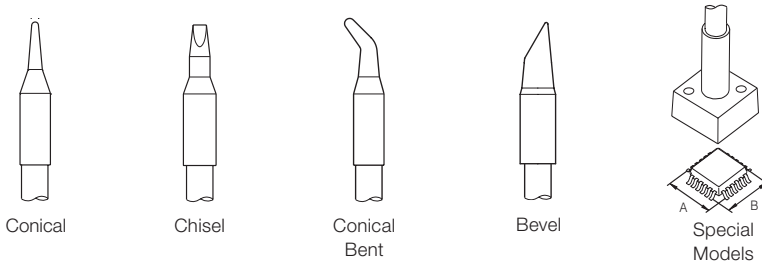




## Cartridge Range

JBC offers for each handle different cartridge types. Find the model that best suits your soldering needs at [www.jbctools.com](http://www.jbctools.com).

T210 Handles work with C210 Cartridges, T245 Handles work C245 Cartridges and T470 Handles with C470 Cartridges.



Conical

Chisel

Conical Bent

Bevel

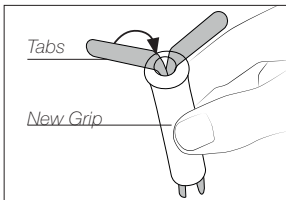
Special Models

## Changing Grips

Replace the soft foam grips easily using the slip-on tabs. **Note:** Choose the correct grip depending on your handle model.

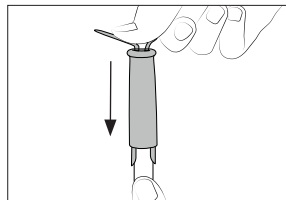
Handles	Green grips	Blue grips	Black grips
T210, T210P, T210N	T8658	T3310	T3311
T245, T245G, T245P	T6057	T1528	T1530

### 1. Inserting Tabs



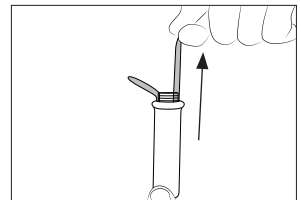
Put the slide-on tabs into the new grip.

### 2. Inserting Handle



Push the grip with the tabs onto the handle.

### 3. Removing Tabs



Hold the grip and pull the tab. Use pliers if necessary.

# Replacing Sealing Plugs

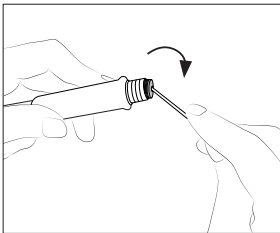
The sealing plug prevents undesirable flux vapors or particles from entering inside the tool. Its usage is highly recommended for intensive applications when soldering is exposed to FOD environments or for applications where the soldering iron works close to vertical position.

**Note:** Choose the correct sealing plug depending on your handle model.

**⚠** Before replacing the sealing plug, unplug the power supply and make sure the device is not hot.

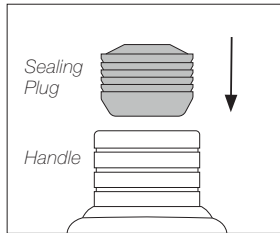
Handles	Sealing Plug
T210	OB1000
T245, T470	OB2000

## 1. Removing Sealing Plug



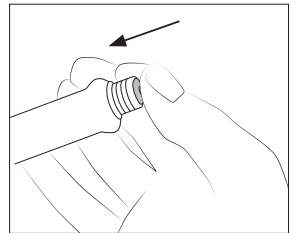
Enter, not deeper than 8mm, a small shaft or screwdriver, lift and pull the sealing plug. Never use a cartridge to do this operation.

## 2. Mounting Position



**Note:** The chamfered side has to be positioned towards the handle.

## 3. Inserting Sealing Plug



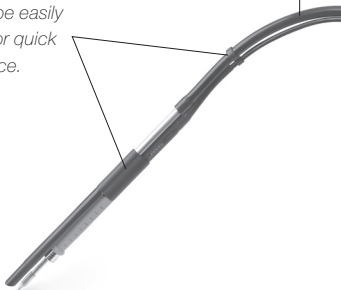
Push the sealing plug inside the handle until the sealing plug and handle edges are aligned.

# Accessories

## Fume extractor

Ref. F3435 (for T245 / T470)  
Ref. F3450 (for T210)

*Clips can be easily removed for quick maintenance.*



## Cable collector

Ref. CC1001  
Keeps the work area free of cable.



## Compatibility

Handle	Cartridge Range	Compact Stations	Modular System				
		CD	Stand	DIU	DDU	DMU	HDU
T210	C210	●	ADS	●	●	●	
T210P		●		●	●	●	
T245	C245	●		●	●	●	
T245G		●		●	●	●	
T245P		●		●	●	●	
T470	C245	●	ADS	●	●	●	
	C470		HDS				●
T470S	C245	●	ADS	●	●	●	
	C470		HDS				●
T470F	C245	●	ADS	●	●	●	
	C470		HDS				●
T470M	C245	●	ADS	●	●	●	
	C470		HDS				●
T470Z	C245	●	ADS	●	●	●	
	C470		HDS				●
T210N*	C210		DNS	●	●	●	
T245N*	C245			●	●	●	
T470N*	C245			●	●	●	
	C470						

\* The MNE Nitrogen Flow Regulator is required. Use the proper nozzle according to the cartridge.

## Maintenance

- Before carrying out maintenance, always unplug the stand and the tool.
- Check periodically that the metal parts of the tool and the stand are clean to ensure detection of the tool when it is in the stand. Use a damp cloth or alcohol.
- Periodically check all cables and tubes connections.
- Replace any defective or damaged pieces. Use original JBC spare parts only.
- Repairs should only be performed by a JBC authorized technical service.

## Safety



**It is imperative to follow safety guidelines to prevent electric shock, injury, fire or explosion.**

- Do not use the units for any purpose other than soldering or rework. Incorrect use may cause fire.
- Do not work on electrically live parts.
- The tool should be placed in the stand when not in use in order to activate the sleep mode. The soldering tip, the metal part of the tool and the stand may still be hot after the station is turned off. Handle with care, including when adjusting the stand position.
- Do not leave the appliance unattended when it is on.
- Avoid flux coming into contact with skin or eyes to prevent irritation
- Be careful with the fumes produced when soldering.
- Keep your workplace clean and tidy. Wear appropriate protection glasses and gloves when working to avoid personal harm.
- Utmost care must be taken with liquid tin waste which can cause burns.
- This appliance can be used by children over the age of eight as well as persons with reduced physical, sensory or mental capabilities or lacking experience provided that they have been given adequate supervision or instruction concerning use of the appliance and understand the hazards involved. Children must not play with the appliance.
- Maintenance must not be carried out by children unless supervised.





## Specifications

### T210

#### Precision Handles

Net Weight:

Package Weight:

Ref. <b>T210-A</b>	56.8 g / 0.013 lb	106.5 g / 0.031 lb
Ref. <b>T210-PA</b> , Blue Grip	56.8 g / 0.013 lb	106.5 g / 0.031 lb
Ref. <b>T210-NA</b> , Nitrogen	93 g / 0.013 lb	165 g / 0.031 lb

### T245

#### General Purpose Handles

Ref. <b>T245-A</b>	66 g / 0.146 lb	115 g / 0.254 lb
Ref. <b>T245-GA</b> , Reinforced Cable	66 g / 0.146 lb	115 g / 0.254 lb
Ref. <b>T245-PA</b> , Blue Grip	63.8 g / 0.141 lb	114.7 g / 0.253 lb
Ref. <b>T245-NA</b> , Nitrogen	93.2 g / 0.205 lb	165 g / 0.364 lb

### T470

#### Heavy Duty Handles

Ref. <b>T470-A</b>	89.6 g / 0.198 lb	140.5 g / 0.310 lb
Ref. <b>T470-SA</b> , 3m / 9.84ft cable	140.3 g / 0.309 lb	190.9 g / 0.421 lb
Ref. <b>T470-FA</b> , Thermal Insulator Grip	90.7g / 0.200 lb	140.6 g / 0.310 lb
Ref. <b>T470-MC</b> , Thermal Insulator Grip and 3m / 9.84ft cable	137.8 g / 0.304 lb	188.6 g / 0.416 lb
Ref. <b>T470-ZA</b> , Tri-Lobed Grip	90 g / 0.198 lb	140 g / 0.309 lb
Ref. <b>T470-NA</b> , Nitrogen	93 g / 0.205 lb	165 g / 0.364 lb

#### For **T245-NA** and **T470-NA**:

- Package Dimensions: 277 x 73 x 50 mm  
(L x W x H) 8.94 x 2.87 x 1.97 in

#### For **T470-MC**:

- Package Dimensions: 145 x 18 x 18mm  
(L x W x H) 5.71 x 0.71 x 0.71 in

#### For **all other** handles:

- Package Dimensions: 235 x 40 x 40mm  
(L x W x H) 9.25 x 1.57 x 1.57 in

Complies with CE standards

ESD safe

# JBC

---

## Warranty

JBC's 2 year warranty covers this equipment against all manufacturing defects, including the replacement of defective parts and labour.

Warranty does not cover product wear or misuse.

In order for the warranty to be valid, equipment must be returned, postage paid, to the dealer where it was purchased.

---



This product should not be thrown in the garbage.

In accordance with the European directive 2012/19/EU, electronic equipment at the end of its life must be collected and returned to an authorized recycling facility.



[www.jbctools.com](http://www.jbctools.com)

0028966-170622