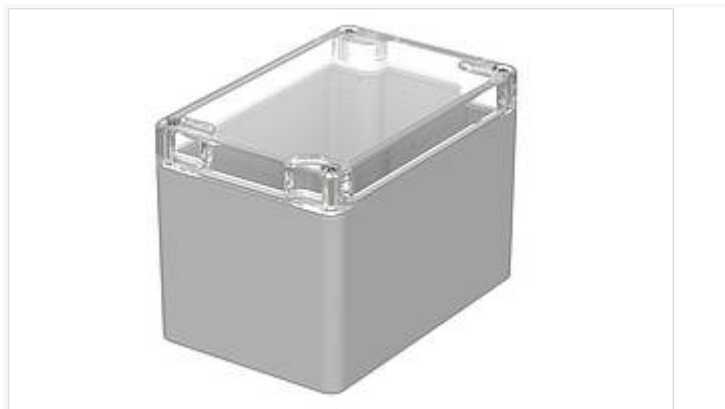


Euromas ABS / PC / F05

Enclosure, polycarbonate



M 226 G

Order no.: 02226100

* = Available on request.

Characteristics

Colour of enclosure group

Light grey

Protection class

IP 65

Impact protection

IK 07

Enclosure Material

ABS, PC (UV stabilised) and selected sizes in PC UL 94 V0 (additional UL 94 V0 versions on request), seal made of CR; V215: Vestamid, CR seal; for details see Technical Information

Scope of delivery

Lid and base, lid screws made of V2A, self-tapping screws for mounting bosses

Note

G = Design with crystal-clear lid.

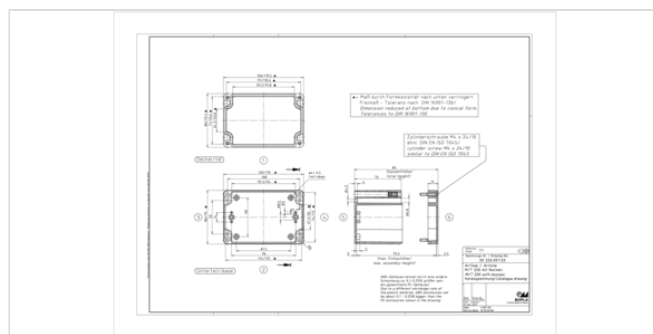
IP = Ingress protection acc. to DIN EN 60529

Dimensions

Dimensions

120 x 80 x 85 mm

Product drawing



Technical documentation / Downloads

Technical drawings

3D product data in STEP format: 02226100 M-226-G.stp (530.2 KB)

Drawing for mechanical processing: 02226100 M-226-G-G.dxf (752.4 KB)

Milling contours are shown here as a DXF file. (Sub D, USB, HDMI, cable glands, ...)

19.10.2022

Works Test Certificates

670 WPZ-Euomas-PC DE.pdf (197.3 KB)

670 WPZ-Euomas-PC EN.pdf (191.1 KB)

Product information

euomas-abs-pc-f05 en.pdf (1.1 MB)

Important!

To compensate for pressure when temperatures change and cause moisture in the enclosure, we recommend that you use a pressure compensation element.

» Additional information

Matching accessories



Mast mounting, stainless steel V2A, uncoated

96500080 MH 080

96500122 MH 122



Mounting panels, laminated paper

22000400 M M 215/216/226/230 For EM/ET 215, M/T 215-216, M/T 226, M/T 230



Wall brackets on rear, screw-on, polycarbonate

22004900 WL

For M/T 210-243, M/T 246-253



DIN rails DIN EN 60715 TH 15, galvanised steel

22001900 TS 15

For M/T 215-217, M/T 226-230



Threaded inserts for mounting bosses

59002810 DODGE M3x6,5

ND = 4.0 x 6.5

59002820 DODGE M4x9,5

ND = 5.4 x 9.5



Rubber feet, plug-in

22003300 F

For M/T 208-260



Knurled screws

22003100 RD

For M/T 210-215, M/T 217, M/T 220-227,
M/T 231



Screws (SHR) and distance bolts (DIBLZ) for mounting bosses in plastic enclosures

59006101 SHR Z B4,5x7,8

SD = 4.5 / ND = 4.0 / KD = 7.5