

Intertego

Enclosure profile sets, 3U



IT 153530
Order no.: 95153530

* = Available on request.

Characteristics

Protection class

IP 40

Enclosure Material

Profiles: Al Mg Si 0.5; diecast corners: zinc alloy Z410; seal: TPE.
For details see Technical Information.

Scope of delivery

2 side profiles, 4 front profiles, 4 diecast corners, 4 decor elements, dark grey, mounting material

Note

Special sizes on request. Accessories (EMC, 19",...) see following pages.

Dimensions

Dimensions

144.3 x 357.04 x 304.4 mm

U

3

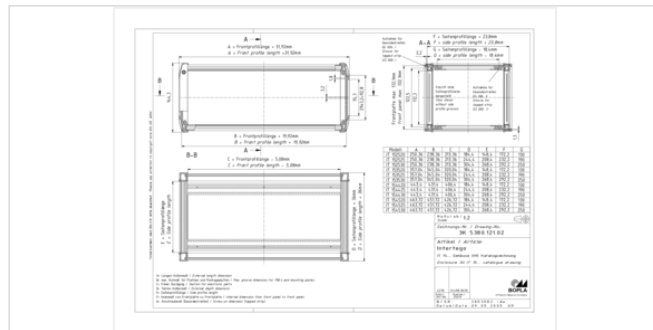
HP

63

Cards depth

280

Product drawing



Technical documentation / Downloads

Technical drawings

3D product data in STEP format: 95153530 IT-153530.stp (7.1 MB)
Product drawing in PDF format: 95153530 IT-153530.pdf (237.6 KB)
Product drawing in DXF format: 95153530 IT-153530.dxf (1.1 MB)

19.10.2022

Product information

intertego en.pdf (2.8 MB)

19 Inch Standard Overview EN.pdf (4.6 MB)

Assembly Instructions

Intertego IT Gehaeusemontage Enclosure Assembly 95000095.pdf (513.8 KB)

Important!

To compensate for pressure when temperatures change and cause moisture in the enclosure, we recommend that you use a pressure compensation element.

» Additional information

Matching accessories



Coloured covers for wall brackets

94785000	AS 0030 AK-WB-rot	For AS 0030-...WB-..., IT 0000.. WB	Red
94783000	AS 0030 AK-WB-grün	For AS 0030-...WB-..., IT 0000.. WB	Green
94786000	AS 0030 AK-WB-orange	For AS 0030-...WB-..., IT 0000.. WB	Orange
94784000	AS 0030 AK-WB-blau	For AS 0030-...WB-..., IT 0000.. WB	Blue



Desktop enclosures

86050000	AF1/INS	Tip-up feet
----------	---------	-------------



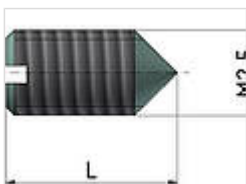
Tapped strips, galvanised steel, M2.5, 7 x 2 mm, for part front panel fixing

54000631	GS 00063-I
----------	------------



Tapped strips, galvanised steel, M2.5, 5 x 1.5 mm, for horizontal profile grooves and rear fixing of backplanes, insulating strips and Z rails

54000632	GS 00063-II
----------	-------------



Slotted set screw M2.5 x 8 / M2.5 x 5, V2A, for positioning and earthing the tapped strip

54700390	GSE-5	L = 5mm
----------	-------	---------



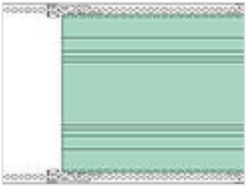
Insulated plastic, UL 94 V1, for insulated fixing of backplanes

54000142	IS 00042
----------	----------



Z-rails, natural-coloured anodised aluminium, for connectors acc. to DIN EN 60603-2 (formerly DIN 41612)

54001630 ZS 00063



Partition, 3 U, screwable, with slots for GS...II, natural-coloured anodised aluminium, for separating defined sections

54016300 TP 16300



Interzoll mounting material

54700010 BFS 0100

Recessed head screw M 4x12 for Interzoll profiles

54700030 BFS 0300

Cheese-head screw M 2.5x8, slotted, for fixing of card earthing, card guide, insulating strip and Z rails



Plug-in front panels, front natural-coloured anodised aluminium, passivated on rear, incl. handles, plastic, UL 94 V 0, light grey

86803037 ST/M 303

86804037 ST/M 304

86805037 ST/M 305

86806037 ST/M 306

86808037 ST/M 308

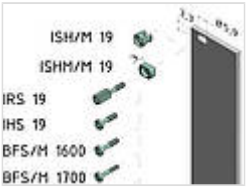
86809037 ST/M 309

86810037 ST/M 310

86812037 ST/M 312

86818037 ST/M 318

86821037 ST/M 321



Mounting material for part front panels and plug-in units

86080510 ISH/M 19

Plastic screwholder, PA 6, grey

86080500 ISHM/M 19

Metal screw holder, stainless steel (1.4305), for conductive contacting for riveting to the front panel

54700420 IRS 19

Slotted knurled screw, collar screws SHR R M2.5x11.3x6.3-SP

54700410 IHS 19

Collar screws SHR Z M2.5x11.3x6.3-SP, slotted-head screw

86000160 BFS/M 1600

Collar screws, SHR Z M 2.5x12.3x6.5-SP, nickel-plated steel, for front panels

86000170 BFS/M 1700

Collar screws, SHR Z M 2.5x12.3x6.5-SP, nickel-plated steel, for front panels, torx 8

86000220 BFS/M 2200

Knurled screw without slot, SHR R M 2.5x12.3x6.5-SPx18.3, nickel-plated steel



Interzoll PRO frame-type plug-in units, 3 U, natural-coloured anodised aluminium front panel, colourless passivated aluminium side profiles, galvanised steel cover plates, plain, galvanised steel rear panel with one slot, 3 U

85808311 IZK/M 16308-RW1-P

85810311 IZK/M 16310-RW1-P

85812311 IZK/M 16312-RW1-P

85814311 IZK/M 16314-RW1-P

85821311 IZK/M 16321-RW1-P

85828311 IZK/M 16328-RW1-P

85842311 IZK/M 16342-RW1-P



Cover plates, perforated, 1mm, galvanised sheet steel, for frame-type plug-in units, 3 U

86090812 IZK/M 16008-ADL-P
86091012 IZK/M 16010-ADL-P
86091212 IZK/M 16012-ADL-P
86091412 IZK/M 16014-ADL-P
86092112 IZK/M 16021-ADL-P
86092812 IZK/M 16028-ADL-P
86094212 IZK/M 16042-ADL-P



Cover plates, perforated, 1mm, galvanised sheet steel, for PRO frame-type plug-in units, 3 U, to accommodate card guides

86090813 IZK/M 16008-ADL-KF-P
86091013 IZK/M 16010-ADL-KF-P
86091213 IZK/M 16012-ADL-KF-P
86091413 IZK/M 16014-ADL-KF-P
86092113 IZK/M 16021-ADL-KF-P
86092813 IZK/M 16028-ADL-KF-P
86094213 IZK/M 16042-ADL-KF-P



Card guides for cover plates IZK/M-ADL-KF, plastic, UL 94 V0, red

86216030 IZK/M KF-160-P



Rear panel open, galvanised sheet steel, for IZK/M frame-type plug-in units

86090833 IZK/M 00308-RWO-P
86091033 IZK/M 00310-RWO-P
86091233 IZK/M 00312-RWO-P
86091433 IZK/M 00314-RWO-P
86092133 IZK/M 00321-RWO-P
86092833 IZK/M 00328-RWO-P
86094233 IZK/M 00342-RWO-P



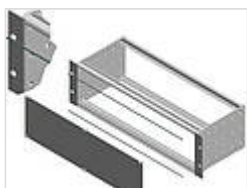
Assembly tools for EMC spring

86001202 MWZ/M-II For FP/M



EMC springs, stainless steel, for the connection between front panels, front panel and flange or rear panel and rear end profile

86001003 EMV-Feder-FP/M 3HE



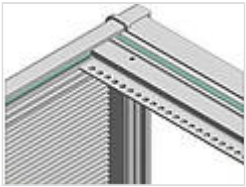
EMC springs, stainless steel, for the connection between the front panel / backplane and profile

86001163 EMV-Feder-FP/M 63TE



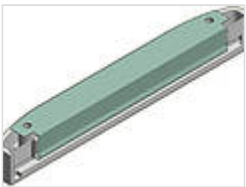
Plug-in front panels, EMC, front natural-coloured anodised aluminium, passivated on rear with slot for EMC spring and pressed-in alignment pin

- 86803038 ST/M 303-EMV
- 86804038 ST/M 304-EMV
- 86805038 ST/M 305-EMV
- 86806038 ST/M 306-EMV
- 86808038 ST/M 308-EMV
- 86809038 ST/M 309-EMV
- 86810038 ST/M 310-EMV
- 86812038 ST/M 312-EMV
- 86818038 ST/M 318-EMV
- 86821038 ST/M 321-EMV



EMC textile seal, self-adhesive, for mounting on front and side profiles for conductive connections between profiles and EMC cover plate

- 95112000 IT-EMV 1



EMC corner seal set for mounting on the diecast corners to create conductive connections between the side profiles and the front area

- 95160001 IT-EMV 3 For IT 15....



EMC round cord seal, for mounting in front profiles for conductive connections between profiles and plug-in EMC front panels

- 59010509* HF-DI Sold by the metre



Plain cover plates, 1 mm, graphite grey aluminium, powder-coated

- 95013530 IT 003530 AD-7024 For IT ..3530



Plain cover plates, 1 mm, natural-coloured anodised aluminium

- 95023530 IT 003530 AD-EQ For IT ..3530



Cover plates with ventilation, 1 mm, graphite grey aluminium, powder-coated

- 95033530 IT 003530 ADL-7024 For IT ..3530



Cover plates with ventilation, 1 mm, natural-coloured anodised aluminium

- 95043530 IT 003530 ADL-EQ For IT ..3530



Cover plates, screw-on, 2mm, aluminium, graphite grey, powder-coated

95173530 IT 003530 AD-A-2-7024 For IT ..3530



Cover plates closed, screw-on, 2mm, aluminium, natural-coloured anodised

95123530 IT 003530 AD-A-2-EQ For IT ..3530



Cover plates with ventilation, screw-on, 2mm, aluminium, graphite grey powder-coated

95143530 IT 003530 ADL-A-2-7024 For IT ..3530



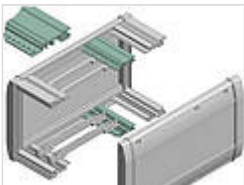
Cover plates with ventilation, screw-on, 2mm, aluminium, natural-coloured anodised

95133530 IT 003530 ADL-A-2-EQ For IT ..3530



Plain EMC cover plates, aluminium, visible area graphite grey, powder-coated

95053530 IT 003530 AD-7024-EMV For IT ..3530



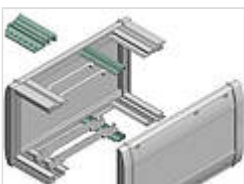
Aluminium bus profiles, natural-coloured anodised, for indirect fixing of backplanes

95300035 ITPB 003500 For IT ..35..



Rear profiles, aluminium, natural-coloured, for connectors acc. to DIN EN 60603-2 (previously DIN 41612)

95303500 ITPR 003500 For IT ..35..



Snap profiles, natural-coloured anodised aluminium, for holding the card guides

95400035 ITRP 003500 For IT ..35..



Decor strips, TPE

95011130 IT 000030 DS-dunkelgrau For IT....30

Dark grey

95011230 IT 000030 DS-rot For IT....30

Red

95011330 IT 000030 DS-grün For IT....30

Green

95011430 IT 000030 DS-orange For IT....30

Orange

95011530 IT 000030 DS-blau For IT....30

Blue



Decor elements, TPE

95152201	IT 150000 DE-rot	For IT 15....	Red
95152301	IT 150000 DE-grün	For IT 15....	Green
95152401	IT 150000 DE-orange	For IT 15....	Orange
95152501	IT 150000 DE-blau	For IT 15....	Blue



Flange panel, natural-coloured anodised aluminium, for fitting an enclosure (80 HP useful width) in a 19" cabinet

95005380	IT 15 FLP	For IT 1544.., space requirement 4 U
----------	-----------	--------------------------------------



Wall fitting, graphite grey aluminium, powder-coated

95005030	IT 000030 WB	For IT....30
----------	--------------	--------------



Wall angle for fitting on front of enclosure, graphite grey sheet steel, powder-coated

95005300	IT 15 WW	For IT 15....
----------	----------	---------------



Tower foot, graphite grey aluminium, powder-coated

95006030	IT 000030 T	For IT....30
----------	-------------	--------------



Unit feet, polyamide

95006000	IT GF
----------	-------



Handles / Tip-up bows for IT 15..., IT 20...

95007335	IT 003500 HS1	For IT 1535.., IT 2035..
----------	---------------	--------------------------



Handle shells, black plastic

95007100	IT-GRS
----------	--------



Front panels, 2 mm, natural-coloured anodised aluminium, plug-in

95154035	IT 153500 FP	For IT 1535..
----------	--------------	---------------



EMC front panels, natural-coloured anodised aluminium on front, 2 mm, colour-passivated on rear, plug-in

95164035 IT 153500 FP-EMV

For IT 1535..