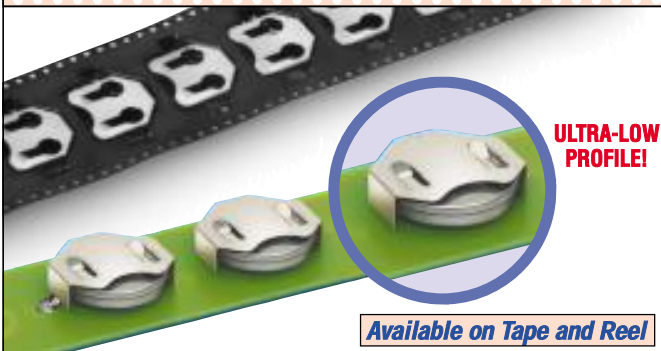




Designers' Choice

COIN CELL RETAINERS & HOLDERS

SURFACE & THRU HOLE MOUNT COIN CELL RETAINER CONTACTS



ULTRA-LOW PROFILE!

Available on Tape and Reel

COMPACT CONTACTS

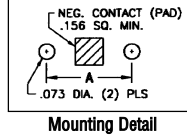
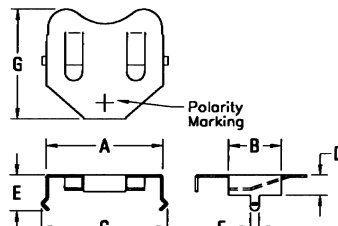
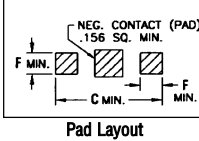
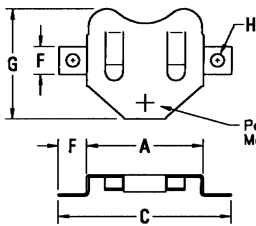
Economical and reliable retainer contacts are designed for quick and easy battery installation and replacement. Perfect for memory back-up applications. Surface and thru hole mount retainer contacts are available for 6.8mm to 24mm lithium coin cell batteries.

- Low profile for densely packed PCBs
- Retains cell securely, withstands shock & vibrations
- Reliable dual spring contacts assure low contact resistance
- Polarity clearly marked (+)
- Stable thru mount legs for increased strength
- Balanced & lightweight for reliable pick-up & placement
- Compatible with vacuum and mechanical pick & place assembly systems
- "Flow-Hole" SMT solder tail design for increased joint strength
- Viewable solder tails assures reliable joint inspection
- All conductive polystyrene carrier tape meets ANSI/EIA - 481 standard

New



For 6.8mm Dia. Button Cell



Also Available:
Optional negative bottom contact.
(Cat. No. 2990, see page 9)

DWG. 1 - SURFACE MOUNT (SMT)

MATERIAL: .010 Phosphor Bronze, Nickel Plate

DWG. 2 - THRU HOLE MOUNT (THM)

MATERIAL: .010 Phosphor Bronze, Nickel Plate

CAT. NO.	ON TAPE & REEL	DWG. NO.	MTG. TYPE	A	B	C	D	E	F	G	H DIA.	CELL DIA.	BATTERY REFERENCE	TAPE & REEL SPEC'S
2998	2998TR	1	SMT	.315	.197	.421	.114	—	.070 × .200	.315	.064	6.8mm	MC621, V364, SC621	24mm wide; 12mm pitch; 13 inch (1250 pieces per reel)
3000	3000TR	1	SMT	.520	.281	.745	.125	—	.125	.500	.047	12mm	BR1216, CR1216, BR1220, CL1220, CR1220, BR1225	32mm wide; 16mm pitch; 13 inch reel (1000 pieces per reel)
3001	—	2	THM	.520	.281	.585	.118	.210	.062	.500	—	16mm	BR1616, CR1616, CR1620, CR1632	44mm wide; 24mm pitch; 13 inch reel (700 pieces per reel)
3012	3012TR	1	SMT	.664	.250	.914	.156	—	.125	.594	.047	16mm	BR1616, CR1616, CR1620, CR1632	44mm wide; 24mm pitch; 13 inch reel (700 pieces per reel)
3013	—	2	THM	.664	.250	.723	.145	.265	.062	.594	—	20mm	BR2016, CR2016, DL2016, BR2020, CL2020, BR2025, CR2025, DL2025, DR2032, CR2032, DL2032	44mm wide; 24mm pitch; 13 inch reel (500 pieces per reel)
3002	3002TR	1	SMT	.821	.371	1.210	.156	—	.200	.775	.093	20mm	BR2016, CR2016, DL2016, BR2020, CL2020, BR2025, CR2025, DL2025, DR2032, CR2032, DL2032	44mm wide; 24mm pitch; 13 inch reel (500 pieces per reel)
3003	—	2	THM	.821	.371	.890	.145	.265	.062	.775	—	23mm	BR2320, CL2330, CR2320, BR2325, CR2325, DL2325	56mm wide; 32mm pitch; 13 inch reel (400 pieces per reel)
3004	3004TR	1	SMT	.939	.371	1.339	.145	—	.200	.939	.093	23mm	BR2320, CL2330, CR2320, BR2325, CR2325, DL2325	56mm wide; 32mm pitch; 13 inch reel (400 pieces per reel)
3005	—	2	THM	.939	.371	1.004	.145	.256	.062	.939	—	23mm	CR2354, DL2354	56mm wide; 32mm pitch; 13 inch reel (200 pieces per reel)
3010	3010TR	1	SMT	.939	.371	1.339	.240	—	.200	.819	.093	23mm	CR2354, DL2354	56mm wide; 32mm pitch; 13 inch reel (200 pieces per reel)
3011	—	2	THM	.939	.371	1.004	.240	.351	.062	.819	—	24mm	CR2430, DL2430	56mm wide; 32mm pitch; 13 inch reel (400 pieces per reel)
3006	3006TR	1	SMT	1.000	.371	1.400	.156	—	.200	.918	.093	24mm	CR2430, DL2430	56mm wide; 32mm pitch; 13 inch reel (400 pieces per reel)
3007	—	2	THM	1.000	.371	1.065	.145	.265	.062	.918	—	24mm	CR2450, DL2450	56mm wide; 32mm pitch; 13 inch reel (200 pieces per reel)
3008	3008TR	1	SMT	1.000	.500	1.400	.230	—	.200	.890	.093	24mm	CR2450, DL2450	56mm wide; 32mm pitch; 13 inch reel (200 pieces per reel)
3009	—	2	THM	1.000	.500	1.059	.230	.350	.062	.890	—	24mm	CR2450, DL2450	56mm wide; 32mm pitch; 13 inch reel (200 pieces per reel)

New
New
New
New
New

LOW PROFILE SURFACE & THRU HOLE MOUNT COIN CELL HOLDERS

Designed for quick and easy installation and replacement of 2032 coin cell lithium batteries. The contacts of these holders are polarized to assure proper continuity and circuit protection.

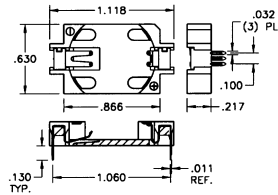


- Polarized Holder
- Retains cell securely to withstand shock and vibration
- Reliable dual spring contacts assure low contact resistance

- Low Profile for densely packaged PCB's
- Compatible with vacuum and mechanical pick & place assembly systems
- Conductive polystyrene carrier tape meets ANSI/EIA - 481 standard

MATERIAL

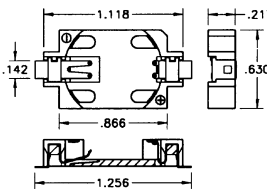
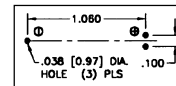
Contacts: .006 Phosphor Bronze, Electro-Solder over Nickel Plate
Base: Glass Filled LCP, UL Rated 94V-0



CAT. NO. 1059 (Bulk)

Thru Hole Mount

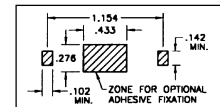
Mounting Detail



CAT. NO. 1060 (Bulk)

Surface Mount

Pad Layout



CAT. NO. 1060TR (Tape & Reel)

Tape & Reel Spec's: 44mm wide; 24mm pitch; 13 inch reel (500 pieces per reel)