

# Element / Universal

Enclosure with air vents



E 406 VL

Order no.: 05406900

\* = Available on request.

## Characteristics

Colour of enclosure group  
light grey/graphite grey

Protection class  
IP 30

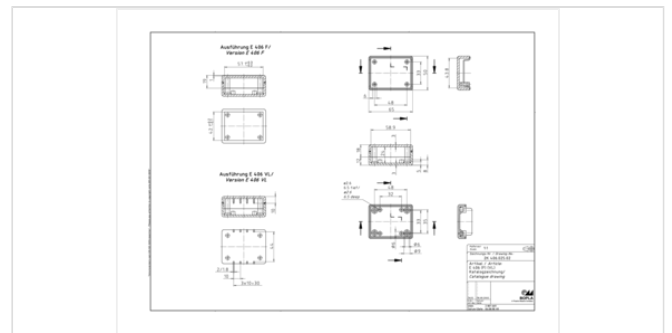
Enclosure Material  
PS (polystyrene); for details see Technical Information

Scope of delivery  
Lid, base, 4 fixing screws

## Dimensions

Dimensions  
65 x 50 x 30 mm

Product drawing



## Technical documentation / Downloads

### Technical drawings

3D product data in STEP format: 05406900 E-406-VL.stp (759.1 KB)  
Product drawing in PDF format: 05406900 E-406-VL.pdf (57.0 KB)  
Product drawing in DXF format: 05406900 E-406-VL.dxf (577.2 KB)

### Product information

element-universal en.pdf (833.2 KB)

## Important!

To compensate for pressure when temperatures change and cause moisture in the enclosure, we we recommend that you use a

25.10.2022

pressure compensation element.

» Additional information

## Matching accessories

---



Rubber feet

22009000 GF

Polyurethane, 65-75 Shore

Black



Wall brackets, nickel-plated sheet steel

25001500 E-WL

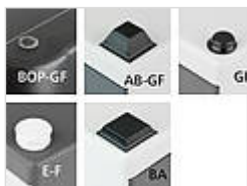
For E 406-E 450



Metal top hat rail adapter for DIN rail DIN EN 60715 TH 35

34035050 TSH 35 AL - 50

Width 50 mm, natural colour anodised



Universal rubber feet for stability of the enclosures on all surfaces

35800300 BOP-GF

Polyurethane, 65-75 Shore

Transparent



Screws (SHR) and distance bolts (DIBLZ) for mounting bosses in plastic enclosures

59006219 SHR Z KA30x6

SD = 3.0 / ND = 2.4-2.6 / KD = 5.3