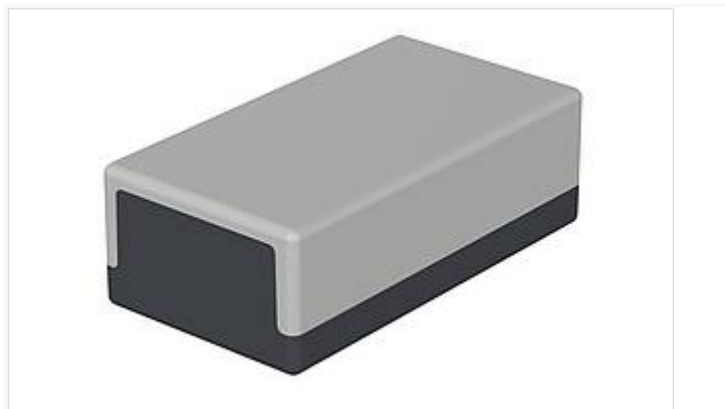


# Element / Universal

Enclosure, plain



E 430

Order no.: 05430002

\* = Available on request.

## Characteristics

Colour of enclosure group  
light grey/graphite grey

Protection class  
IP 40

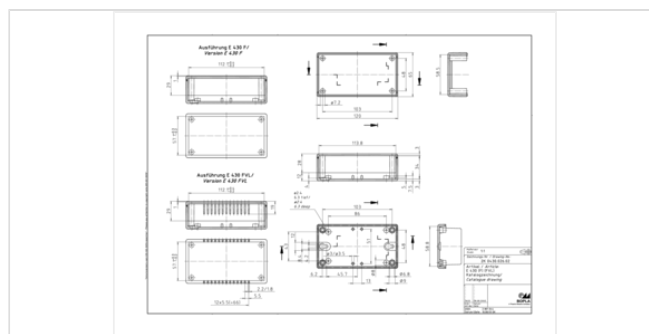
Enclosure Material  
PS (polystyrene); for details see Technical Information

Scope of delivery  
Lid, base, 4 fixing screws

## Dimensions

Dimensions  
120 x 65 x 40 mm

Product drawing



## Technical documentation / Downloads

### Technical drawings

3D product data in STEP format: 05430002 E-430.stp (711.1 KB)

Product drawing in PDF format: 05430002 E-430.pdf (76.9 KB)

Product drawing in DXF format: 05430002 E-430.dxf (882.2 KB)

### Product information

element-universal en.pdf (833.2 KB)

## Important!

To compensate for pressure when temperatures change and cause moisture in the enclosure, we recommend that you use a

25.10.2022

pressure compensation element.

» Additional information

## Matching accessories

---



Rubber feet

22009000 GF

Polyurethane, 65-75 Shore

Black



Wall brackets, nickel-plated sheet steel

25001500 E-WL

For E 406-E 450



Mounting panel, laminated paper

25000200\* E-M

For E 430-E 435



Lid assembly kit from above

25000500\* E-DO

For E 430



Universal DIN rail holder TSH 35, polyamide

22035000 TSH 35

Black, similar to RAL 9005



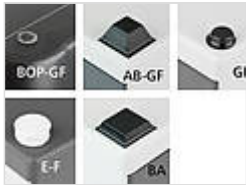
Metal top hat rail adapter for DIN rail DIN EN 60715 TH 35

34035050 TSH 35 AL - 50

Width 50 mm, natural colour anodised

34035100 TSH 35 AL - 100

Width 100 mm, natural colour anodised



Universal rubber feet for stability of the enclosures on all surfaces

35800300 BOP-GF

Polyurethane, 65-75 Shore

Transparent



Screws (SHR) and distance bolts (DIBLZ) for mounting bosses in plastic enclosures

59006219 SHR Z KA30x6

SD = 3.0 / ND = 2.4-2.6 / KD = 5.3

