

Alubos

ABPH 800



ABPH 800-0100
Order no.: 84086100

* = Available on request.

Characteristics

Colour of enclosure group
Black, similar to RAL 9005

Protection class
IP 65

Enclosure Material
Extruded profiles: Al Mg Si 0.5 powder-coated; diecast lid: GB Al Si 12, powder-coated; seal: TPE; for details see Technical Information

Scope of delivery
Enclosure profile, two parts including profile seal

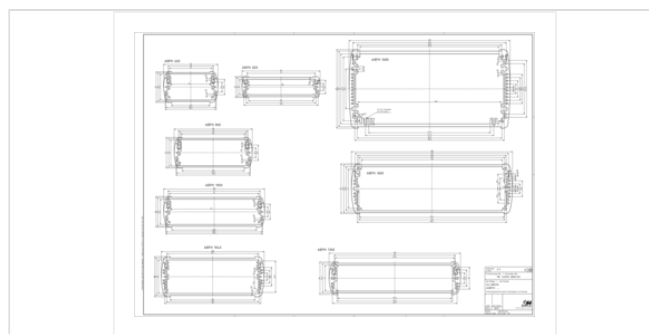
Note

C = profile length, special lengths on request.

Dimensions

Dimensions
82 x 32 x 100 mm

Product drawing



Technical documentation / Downloads

Technical drawings

3D product data in STEP format: 84086100 ABPH-800-0100.stp (392.1 KB)
Drawing for mechanical processing: 84086100 ABPH-800-0100-G.dxf (603.3 KB)
Milling contours are shown here as a DXF file. (Sub D, USB, HDMI, cable glands, ...)
Product drawing in PDF format: 84086100 ABPH-800-0100.pdf (250.0 KB)
Product drawing in DXF format: 84086100 ABPH-800-0100.dxf (1.4 MB)

Product information

alubos en.pdf (2.4 MB)

Assembly Instructions

Alubos ABPH Profil Geteilt Profile Divided 84200035.pdf (1.4 MB)

Important!

To compensate for pressure when temperatures change and cause moisture in the enclosure, we recommend that you use a pressure compensation element.

» [Additional information](#)

Matching accessories



End cover

84081000 ABD 800

For AB 800



Mounting lid with removable aluminium cap

84082000 ABM 800 AL

For AB 800



Mounting lid with hinged aluminium flap

84084000 ABM 800 SAL

For AB 800



Mounting lid with removable aluminium cap and compartment for 9V block battery

84082100 ABM 800 AL BE

For AB 800



Mounting lid with hinged aluminium flap and compartment for 9V block battery

84084100 ABM 800 SAL-BE

For AB 800



Mounting lid with infrared-permissive plastic cap

84083000 ABM 800 IR

For AB 800



Seals, fire red

84200811 DI 800-3000 For AB 800



Seals, ultramarine

84200814 DI 800-5002 For AB 800



Seals, rape yellow

84200812 DI 800-1021 For AB 800



Seals, patina green

84200813 DI 800-6000 For AB 800



Seals UL 94 V0

84200819* DI 800-V0 For AB 800



EMC seals

84200815 DI 800-EMV For AB 800



Wall brackets, sheet steel

84005000 AB-WL For AB 600/800/1000/1300



Wall brackets, adjustable, sheet steel

84085000 AB-800 WLV For AB 800/820



Mounting clamps

84006300 AB-MKL For AB 600/800/1000
84006400 AB 800 MKL For AB 800



Self-adhesive rubber feet, black

84006700 AB - GF

Polyurethane, 65-75 Shore

Black
