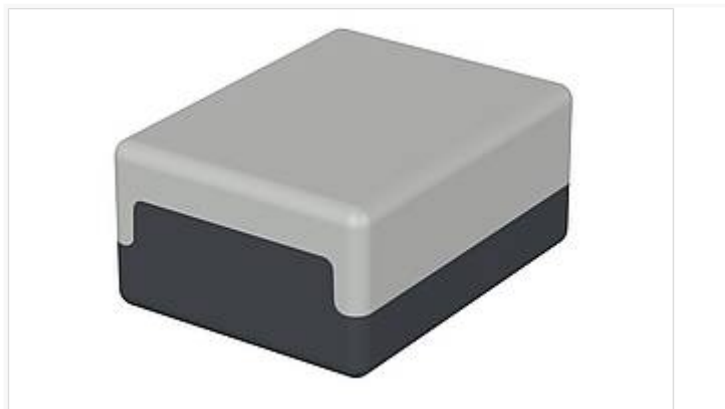


Element / Universal

Enclosure, plain



E 406

Order no.: 05406000

* = Available on request.

Characteristics

Colour of enclosure group

light grey/graphite grey

Protection class

IP 40

Enclosure Material

PS (polystyrene); for details see Technical Information

Scope of delivery

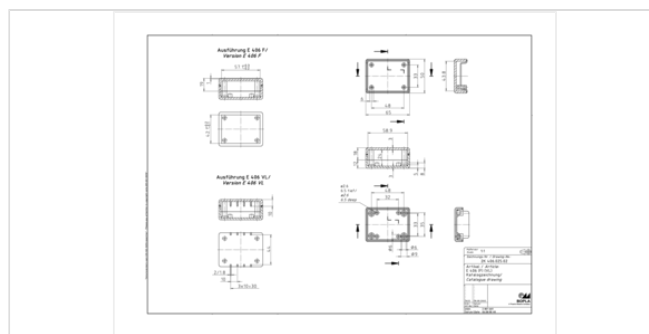
Lid, base, 4 fixing screws

Dimensions

Dimensions

65 x 50 x 30 mm

Product drawing



Technical documentation / Downloads

Technical drawings

3D product data in STEP format: 05406000 E-406.stp (575.2 KB)

Product drawing in PDF format: 05406000 E-406.pdf (57.0 KB)

Product drawing in DXF format: 05406000 E-406.dxf (577.2 KB)

Product information

element-universal en.pdf (833.2 KB)

Important!

To compensate for pressure when temperatures change and cause moisture in the enclosure, we recommend that you use a

27.10.2022

pressure compensation element.

» Additional information

Matching accessories



Rubber feet

22009000 GF

Polyurethane, 65-75 Shore

Black



Wall brackets, nickel-plated sheet steel

25001500 E-WL

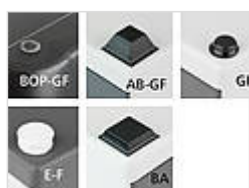
For E 406-E 450



Metal top hat rail adapter for DIN rail DIN EN 60715 TH 35

34035050 TSH 35 AL - 50

Width 50 mm, natural colour anodised



Universal rubber feet for stability of the enclosures on all surfaces

35800300 BOP-GF

Polyurethane, 65-75 Shore

Transparent



Screws (SHR) and distance bolts (DIBLZ) for mounting bosses in plastic enclosures

59006219 SHR Z KA30x6

SD = 3.0 / ND = 2.4-2.6 / KD = 5.3