

Futura / Bopult

Desktop enclosure with membrane keypad area and plug-in rear panel, natural-coloured anodised aluminium



T 898 RO

Order no.: 47898100*

IP 40

* = Available on request.

Characteristics

Colour of enclosure group
Light grey, similar to RAL 7035

Protection class
IP 40

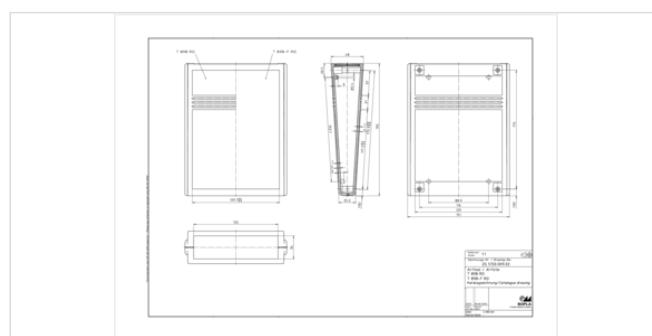
Enclosure Material
ABS; for details see Technical Information

Scope of delivery
Lid and base, screws, aluminium rear panel, rubber feet

Dimensions

Dimensions
151 x 195 x 48 mm

Product drawing



Technical documentation / Downloads

Technical drawings

3D product data in STEP format: 47898100 T-898-RO.stp (865.4 KB)
Product drawing in PDF format: 47898100 T-898-RO.pdf (46.9 KB)
Product drawing in DXF format: 47898100 T-898-RO.dxf (447.2 KB)

Product information

futura-bopult en.pdf (330.3 KB)

Important!

To compensate for pressure when temperatures change and cause moisture in the enclosure, we recommend that you use a pressure compensation element.

» Additional information

Matching accessories



Screws (SHR) and distance bolts (DIBLZ) for mounting bosses in plastic enclosures

59006219 SHR Z KA30x6

SD = 3.0 / ND = 2.4-2.6 / KD = 5.3