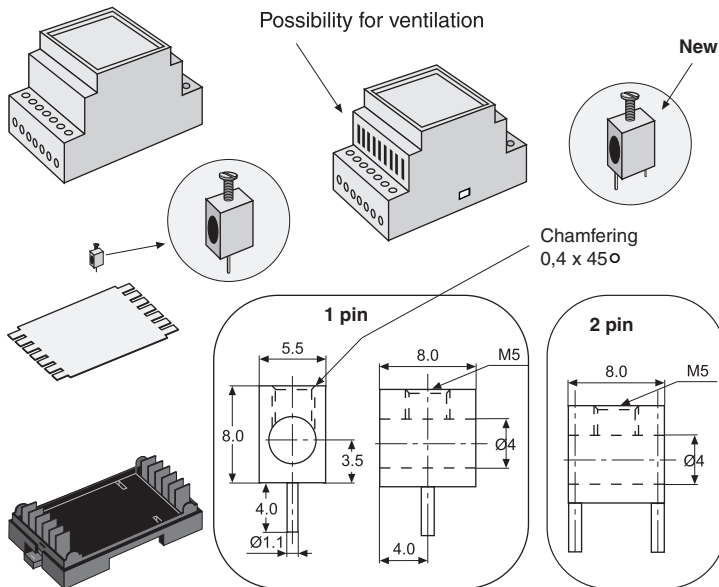


3 MODULE ENCLOSURE FOR M36 DIN-RAIL

SERIES 525



Module enclosure for M36 DIN-rail. Series 525 is, if requested, available in several colours and with custom made holes in the front. PCB and packing is available. Possibility for both base and top PCB. Trimmers and spindles that fit the height of the box are available. Wire guards available on request.

TECHNICAL DATA:

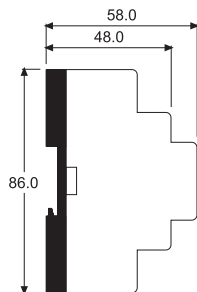
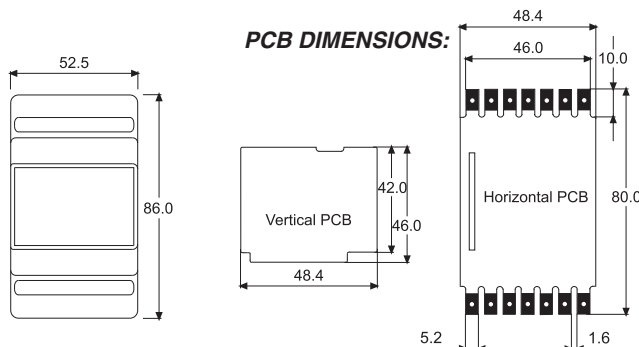
TOP PART:

Material: Lexan 940
 Colour: Grey (RAL 7035)
 Max. temperature: 100°C
 Width: 52.5 mm (3 modules)
 Label measurement: 47.0 x 40.5 ± 0.2
 Self-extinguishing: Acc. to UL94-V0

BASE PART:

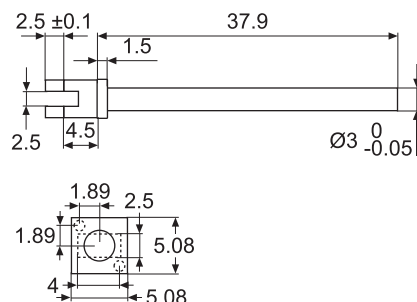
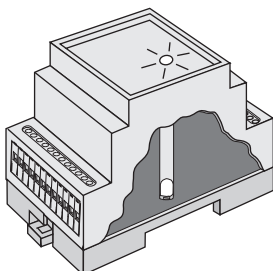
Material: Noryl VO 1550
 Colour: Black (RAL 7005)
 Max. temperature: 100°C
 Max. wire dia.: 2 x 2.5 mm²
 Max. load: 16A
 Terminals: 14
 Mounting: DIN-rail (EN50022)
 Self-extinguishing: Acc. to UL94-V0

PCB DIMENSIONS:



TYPE 525:	ORDER CODE:
Complete with 14 terminals/screws	p/n 4969004525
Top part	p/n 4969000525
Base part with clip	p/n 4969012525
Terminal and screw for 525 (One each)	p/n 4969000999
Packing for 525	p/n 2068525002
RAW PCB horizontal 48.4x80.0 mm	p/n 4999000525

LIGHT CONDUCTOR for 35, 52, 70, 105, 157, 175, 210, 225, 350, 525, 700, 1050 + 1570



Can be used with SMD or leaded Ø3 mm LED's. Material: Clear PC

LIGHT CONDUCTORS

LIGHT CONDUCTOR:	ORDER CODE:
For 3 mm SMD	p/n 4972011259

● All measurements are in mm.