

# Enclosure technology

Bopla Gehäuse Systeme GmbH | Borsigstr. 17-25, 32257 Bünde  
Tel.: +49 (0)5223 / 969 - 0 | E-Mail: info@bopla.de | Internet:  
[www.bopla.de](http://www.bopla.de)



## Euromas ABS / PC / F05 | Enclosure, ABS



**T 215**

**Order no.: 03215000**

\* = Available on request.

### Characteristics

#### Dimensions

120 x 80 x 55 mm

#### Colour of enclosure group

Light grey

#### Protection class

IP 66

#### Enclosure Material

ABS, PC (UV stabilised) and selected sizes in PC UL 94 V0 (additional UL 94 V0 versions on request), seal made of CR;  
V215: Vestamid, CR seal; for details see Technical Information

#### Scope of delivery

Lid and base, lid screws made of V2A, self-tapping screws for mounting bosses

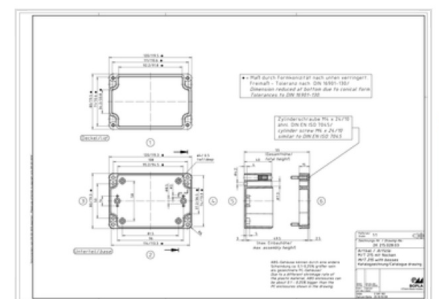
#### Note

SV = version with quick-release fastener.

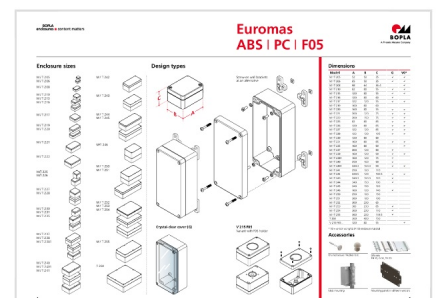
IP = Ingress protection acc. to DIN EN 60529

Material shrinkage may result in ABS enclosures being approx. 0.1 – 0.25 % larger.

### Product drawing



### Enclosure concept



## Important!

---

To compensate for pressure when temperatures change and cause moisture in the enclosure, we recommend that you use a [pressure compensation](#) element.

In order to ensure that you can determine **the correct quantity of elements for your application**, we are providing you here with a DAE calculator.

» [Additional information](#)

## Technical documentation / Downloads

---

### Technical drawings

#### **3D product data in STEP format:**

03215000 T-215.stp  
(1.4 MB)

#### **Drawing for mechanical processing:**

03215000 T-215-G.dxf  
(937.4 KB)

**Milling contours are shown here as a DXF file. (Sub D, USB, HDMI, cable glands, ...)**

#### **Product drawing in PDF format:**

03215000 T-215.pdf  
(91.0 KB)

#### **Product drawing in DXF format:**

03215000 T-215.dxf  
(673.9 KB)

### Works test certificates

#### **670 WPZ-Euromas-PC DE.pdf**

(197.3 KB)

#### **670 WPZ-Euromas-PC EN.pdf**

(191.1 KB)

### Product information

#### **euromas-abs-pc-f05 en.pdf**

(1.1 MB)

## Matching accessories

---



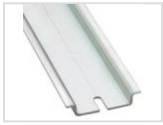
DIN rails DIN EN 60715 TH 15, galvanised steel

22001900

**TS 15**

For M/T 215-217, M/T 226-230

05.12.2022



DIN rails DIN EN 60715 TH 35, galvanised steel

22001910      **TS 35**      For M/T 215-217, M/T 226-230



Knurled screws

22003100      **RD**      For M/T 210-215, M/T 217, M/T  
220-227, M/T 231



Mast mounting, stainless steel V2A, uncoated

96500080      **MH 080**  
96500122      **MH 122**



Mounting plates, laminated paper, galvanised steel for version 260

22000400      **M M**      For EM/ET 215, M/T 215-216, M/T  
**215/216/226/230**      226, M/T 230



Rubber feet, plug-in

22003300      **F**      For M/T 208-260



Threaded inserts for mounting bosses

59002810      **DODGE**      ND = 4.0 x 6.5

**M3x6,5**

59002820      **DODGE**      ND = 5.4 x 9.5

**M4x9,5**



Wall brackets on rear, screw-on, polycarbonate

22004900      **WL**      For M/T 210-243, M/T 246-253