

Filotec | Filotec enclosures with membrane keypad area (1,5 mm) on one half-shell and continuous profiled wall brackets on the other half-shell



F 1048-80 WL

Order no.: 97218080

* = Available on request.

Characteristics

Dimensions

105 x 48 x 80 mm

Protection class

IP 40

Enclosure Material

Al Mg Si 0.5 anodised; for details, please see Technical Information

Scope of delivery

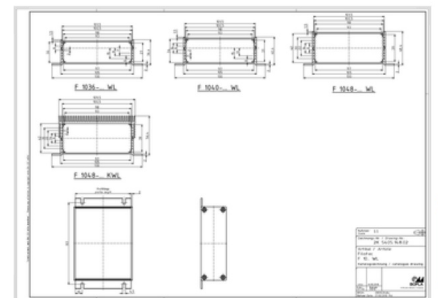
2 enclosure half shells, 8 screws for mounting cover

Note

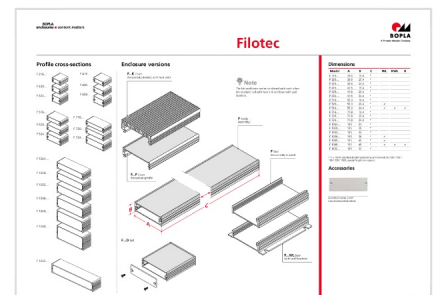
C = profile length, special lengths on request. Covers: See following pages. Please order separately.

** = supplied without wall fitting holes and screw accessory pack. Please order fixing screws (1 piece) separately: 59000175.

Product drawing



Enclosure concept



Important!

To compensate for pressure when temperatures change and cause moisture in the enclosure, we recommend that you use a [pressure compensation](#)

element.

In order to ensure that you can determine **the correct quantity of elements for your application**, we are providing you here with a DAE calculator.

» [Additional information](#)

Technical documentation / Downloads

Technical drawings

3D product data in STEP format:

97218080 F1048-WL-80.stp
(870.7 KB)

Drawing for mechanical processing:

97218080 F-1048-WL-80-G.dxf
(723.0 KB)

Milling contours are shown here as a DXF file. (Sub D, USB, HDMI, cable glands, ...)

Product drawing in PDF format:

97218080 F-1048-80-WL.pdf
(155.0 KB)

Product drawing in DXF format:

97218080 F-1048-80-WL.dxf
(1.3 MB)

Product information

filotec en.pdf

(749.3 KB)

Matching accessories



Cover, natural-coloured anodised aluminium, 2 mm

97610480

F 1048 D

For F 1048-...