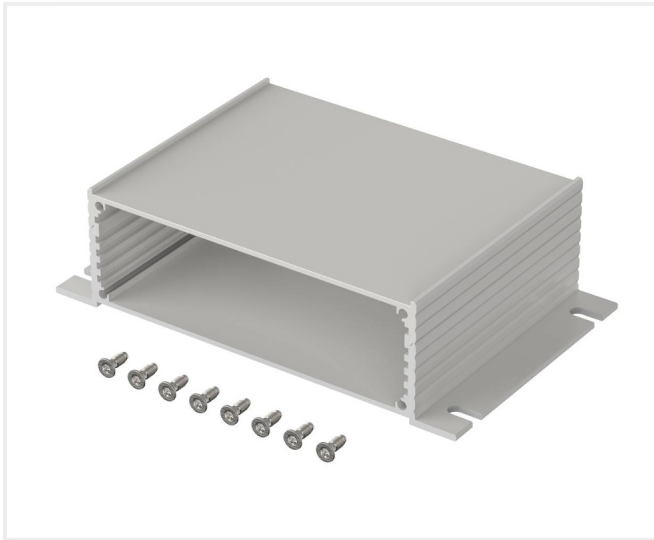


# Filotec | Filotec enclosures with membrane keypad area (1,5 mm) on one half-shell and continuous profiled wall brackets on the other half-shell



**F 1036-80 WL**  
**Order no.: 97216080**

\* = Available on request.

## Characteristics

### Dimensions

105 x 36 x 80 mm

### Protection class

IP 40

### Enclosure Material

Al Mg Si 0.5 anodised; for details, please see Technical Information

### Scope of delivery

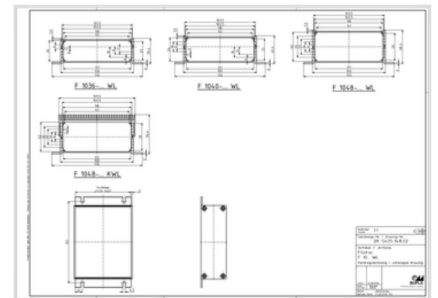
2 enclosure half shells, 8 screws for mounting cover

### Note

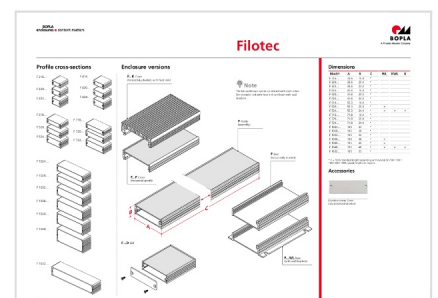
C = profile length, special lengths on request. Covers: See following pages. Please order separately.

\*\* = supplied without wall fitting holes and screw accessory pack. Please order fixing screws (1 piece) separately: 59000175.

## Product drawing



## Enclosure concept



## Important!

To compensate for pressure when temperatures change and cause  
13.02.2023

moisture in the enclosure, we recommend that you use a [pressure compensation](#) element.

In order to ensure that you can determine **the correct quantity of elements for your application**, we are providing you here with a DAE calculator.

» [Additional information](#)

## Technical documentation / Downloads

---

### Technical drawings

**3D product data in STEP format:**

97216080 F1036-WL-80.stp  
(1.1 MB)

**Drawing for mechanical processing:**

97216080 F-1036-WL-80-G.dxf  
(665.6 KB)

**Milling contours are shown here as a DXF file. (Sub D, USB, HDMI, cable glands, ...)**

**Product drawing in PDF format:**

97216080 F-1036-80-WL.pdf  
(155.0 KB)

**Product drawing in DXF format:**

97216080 F-1036-80-WL.dxf  
(1.3 MB)

### Product information

**filotec en.pdf**

(749.3 KB)

## Matching accessories

---



Cover, natural-coloured anodised aluminium, 2 mm

97610360

**F 1036 D**

For F 1036-...