

Alubos | Mounting clamps



AB 800 MKL
Order no.: 84006400
For AB 800

* = Available on request.

Characteristics

Colour of enclosure group

--

Enclosure Material

Extruded profiles: Al Mg Si 0.5 powder-coated; diecast lid: GB Al Si 12, powder-coated;
seal: TPE; for details see Technical Information

Scope of delivery

1 mounting clamp (stainless spring steel)

Note

We recommend using two clamps for profile lengths of 150 mm and over. Direct wall mounting of the clamps is possible with all versions. On request, the mounting clamps can also be supplied coated. Mounting clamp for other profile sizes on request.

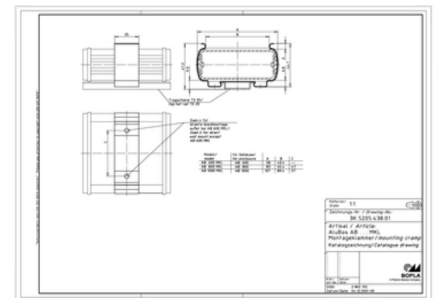
Important!

To compensate for pressure when temperatures change and cause moisture in the enclosure, we recommend that you use a

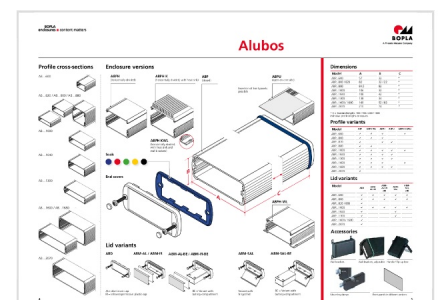
[pressure compensation](#)

28.03.2023

Product drawing



Enclosure concept



element.

In order to ensure that you can determine **the correct quantity of elements for your application**, we are providing you here with a DAE calculator.

» [Additional information](#)

Technical documentation / Downloads

Technical drawings

3D product data in STEP format:

84006400 AB-800-MKL.stp
(109.1 KB)

Product drawing in PDF format:

84006400 AB-800-MKL.pdf
(47.0 KB)

Product drawing in DXF format:

84006400 AB-800-MKL.dxf
(443.0 KB)

Product information

alubos en.pdf

(2.4 MB)