

# BoPad | Hand-held enclosure with battery compartment, IP40 (IP65)



**BOP 500 BE4MC-9016**

**Order no.: 35150026**

\* = Available on request.

## Characteristics

### Dimensions

130 x 75 x 26 mm

### Colour of enclosure group

White, similar to RAL 9016

### Protection class

IP 40 65

### Enclosure Material

Enclosures: ABS

Seal / impact protection: TPE

For details see technical information

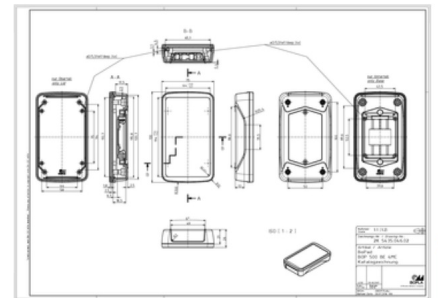
### Scope of delivery

Lid and base, 4 screws, battery compartment lid, screws, battery contacts

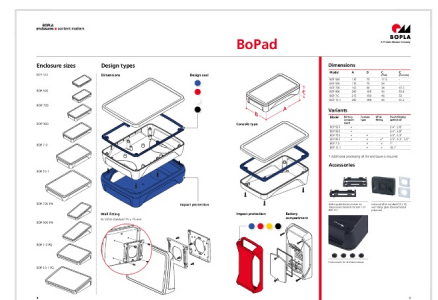
### Note

Upgradable to IP65 with design seal BOP\_ DI.

## Product drawing



## Enclosure concept



## Important!

To compensate for pressure when temperatures change and cause moisture in the enclosure, we recommend that you use a

[pressure compensation](#)

18.04.2023

element.

In order to ensure that you can determine **the correct quantity of elements for your application**, we are providing you here with a DAE calculator.

» [Additional information](#)

## Technical documentation / Downloads

---

### Technical drawings

**3D product data in STEP format:**

35150026 BOP-500-BE4MC-9016.stp  
(6.7 MB)

**Drawing for mechanical processing:**

35150026 BOP-500-BE-4MC-9016-G.dxf  
(1.8 MB)

**Milling contours are shown here as a DXF file. (Sub D, USB, HDMI, cable glands, ...)**

**Product drawing in PDF format:**

35150026 BOP-500-BE4MC-9016.pdf  
(218.2 KB)

**Product drawing in DXF format:**

35150026 BOP-500-BE4MC-9016.dxf  
(2.5 MB)

**Drawing for max. PCB dimensions in PDF format:**

35150026 BOP-500-BE-4MC-9016-pcb.pdf  
(154.8 KB)

**Drawing for max. PCB dimensions in DXF format:**

35150026 BOP-500-BE-4MC-9016-pcb.dxf  
(927.6 KB)

### Product information

**bopad en.pdf**

(952.2 KB)

### Assembly Instructions

**BoPad BOP Batteriekontakte Battery Contacts 35999902.pdf**

(1.7 MB)

## Matching accessories

---



Design seal, IP65

35250005

**BOP 500**

For BOP 500, 520

18.04.2023



35250006	DI-9005 BOP 500	For BOP 500, 520
35250000	DI-9016 BOP 500	For BOP 500, 520
35250001	DI-5005 BOP 500 DI-3001	For BOP 500, 520



#### Impact protection

35350005	BOP 500 S-9005	Black
35350000	BOP 500 S-5005	Signal blue
35350001	BOP 500 S-3001	Signal red
35350003	BOP 500 S-1003	Signal yellow



#### Screw covers for enclosure screws

35007406	BOP-SA-9016	White
----------	-------------	-------



#### Universal VESA standard wall fitting, polyamide glass fibre reinforced

35112005	VESA 50 WB-9005	50x50	Black
35112016	VESA 50 WB-9016	50x50	White