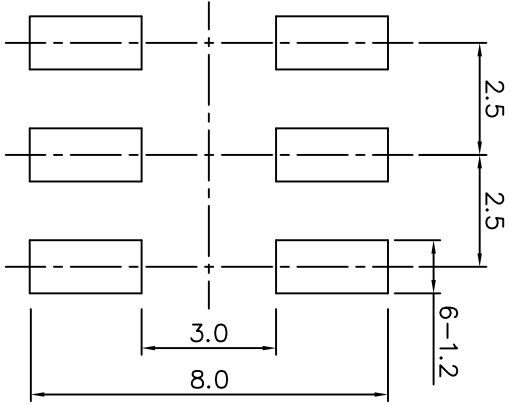
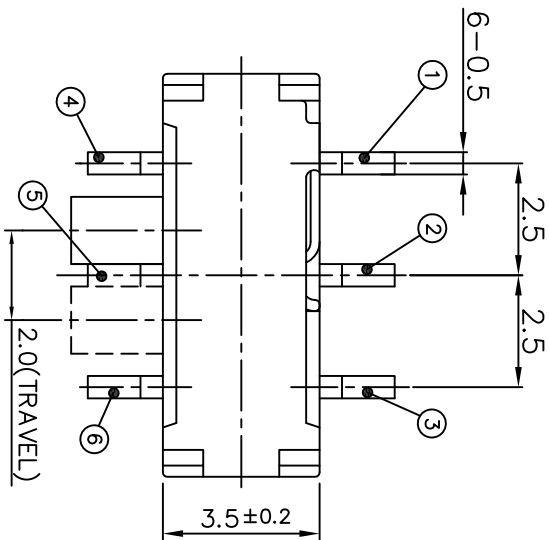
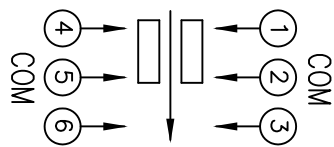


P.C.B LAND PATTERN DETAIL



CIRCUIT DIAGRAM

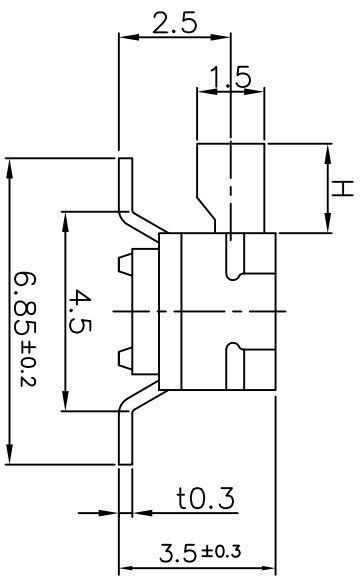
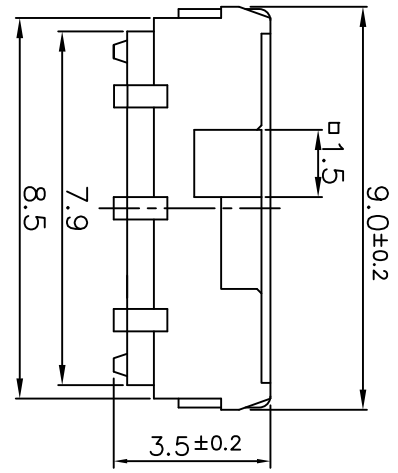


KNOB HEIGHT

MODEL	H (mm)
MSS2245SA	2.0
MSS2245SB	4.0

SPECIFICATION

1. RATING : DC 6V 0.3A
2. CIRCUIT : 2C-2P
3. TIMING : NON-SHORTING
4. TRAVEL : 2±0.1mm
5. OPERATING FORCE : 200±100gf
6. CONTACT RESISTANCE : 70mΩ MAX.
7. OPERATING LIFE : 10,000 CYCLES



TOLERANCE UNLESS OTHERWISE STATED(mm)	PART NO.		MODEL		QTY	MATERIAL		SPECIFICATION		TREATMENT	REFERENCE
	less than 10	10~30	TRIGONOMETRY	UNIT		SCALE	USER				
±0.1			APPROVAL	m/m	1	SLIDE SWITCH					
±0.2			CHECK		1	MSS 2245S					
±0.3			DESIGN								
ANGLE ±2°											
	MARK	DATE	APPR.	CHECK	DESIGN						