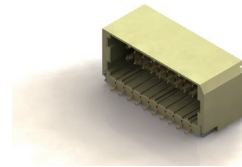
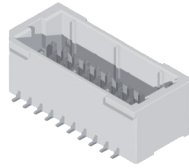


CI11 Series 1.00mm(.039") Dual Row Wire to Board SMT Headers

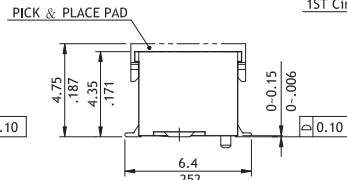
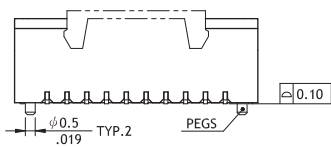
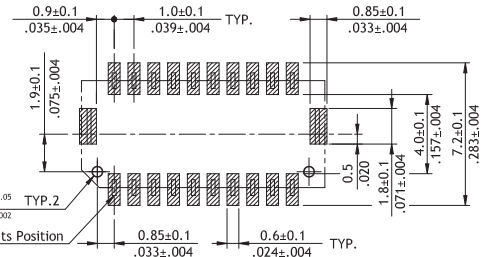
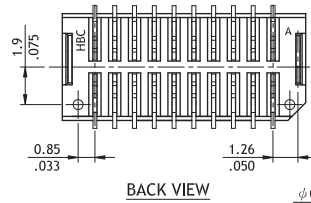
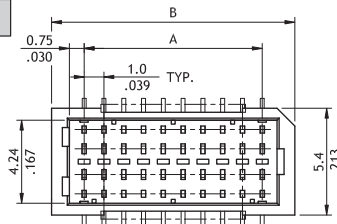
- ⊙ Polarization and Low-profile
- ⊙ Locking slots provide secure mating
- ⊙ Fixed tabs provide PCB hold-down
- ⊙ With Tin plated SMT type contact



RoHS Compliant



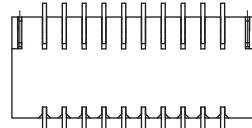
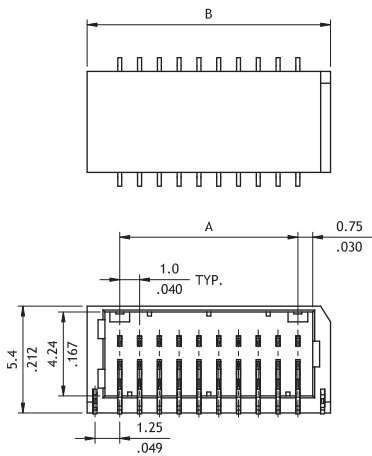
Top Entry



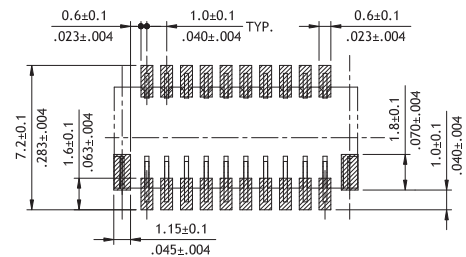
Recommended PCB Layout

Circuits	Dimension	
	A	B
10	4.0(.157)	7.3(.287)
14	6.0(.236)	9.3(.366)
16	7.0(.276)	10.3(.406)
20	9.0(.354)	12.3(.484)
30	14.0(.511)	17.3(.681)
40	19.0(.748)	22.3(.878)
50	24.0(.945)	27.3(1.075)

Side Entry



BACK VIEW



Recommended PCB Layout

Circuits	Dimension	
	A	B
12	5.0(.197)	8.3(.327)
16	7.0(.276)	10.3(.406)
18	8.0(.315)	11.3(.445)
20	9.0(.354)	12.3(.484)
30	14.0(.551)	17.3(.681)
40	19.0(.748)	22.3(.878)
50	24.0(.945)	27.3(1.075)

Ordering Code

① C I 1 1 ② 5 0 ③ M ④ 2 ⑤ V ⑥ D ⑦ 0 - ⑧ R 0 - ⑨ N H

- ① Series No.
- ② No. of Circuits:
Top Entry: 10,14,16,20,30,40,50
Side Entry: 12,16,18,20,30,40,50
- ③ M = SMT Type
- ④ Plating Code:
2 = Gold flash over Nickel

- ⑤ Type: V = Top Entry
H = Side Entry
- ⑥ D = Dual Row type
- ⑦ Pegs Options:
Top Entry: 0 = With Pegs(Standard)
1 = Without Peg
Side Entry: 0 = Standard

- ⑧ Packing Options:
R0 = Tape & Reel
T0 = Tube
- ⑨ Process: -NH = For Lead Free IR process and Halogen-Free