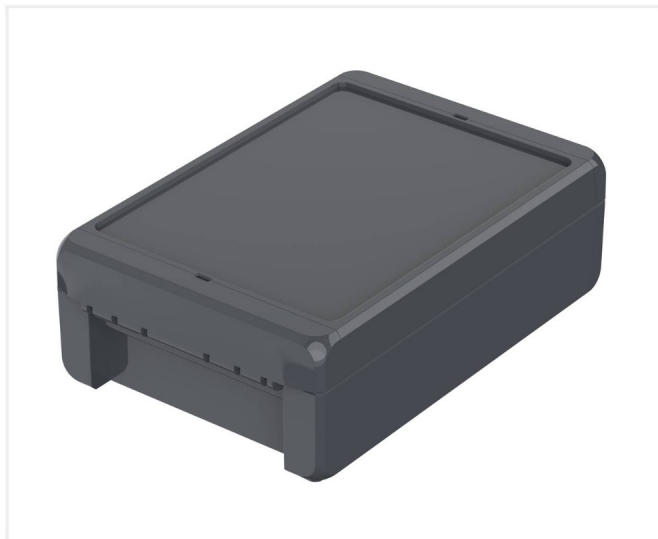


## Bocube | Enclosures, ABS, single-coloured



**B 181306 ABS 7024**

**Order no.: 96034224**

\* = Available on request.

### Characteristics

#### Dimensions

191 x 125 x 60 mm

#### Colour of enclosure group

Graphite grey, similar to RAL 7024

#### Protection class

IP 66 68 – IP68: 1,2m (2, hours)

#### NEMA

3

#### Enclosure Material

ABS or PC UL 94 V-0 (PC V-0 material is flame-resistant, self-extinguishing and suitable for outdoor use; f1 listing acc. to UL 746C)

PU seal, foamed

for details please see Technical Information

#### Scope of delivery

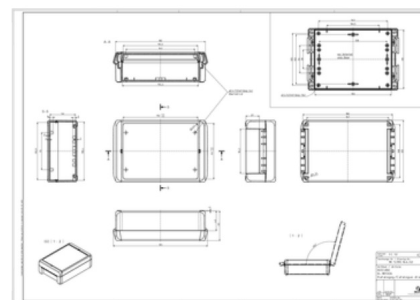
Lid and base, hinged quick-release catches

#### Note

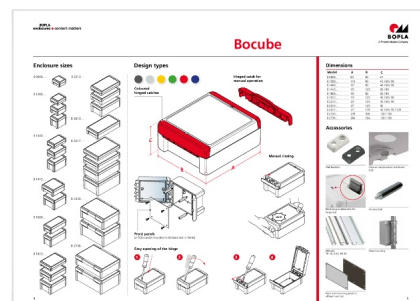
Material shrinkage may result in ABS enclosures being approx. 0.1 – 0.25 % larger.

31.08.2023

### Product drawing



### Enclosure concept



---

## Important!

---

To compensate for pressure when temperatures change and cause moisture in the enclosure, we recommend that you use a [pressure compensation](#) element.

In order to ensure that you can determine **the correct quantity of elements for your application**, we are providing you here with a DAE calculator.

» [Additional information](#)

---

## Technical documentation / Downloads

---

### Technical drawings

**3D product data in STEP format:**

96034224 B-181306-ABS-7024.stp  
(8.4 MB)

**Drawing for mechanical processing:**

96034224 B-181306-ABS-7024-G.dxf  
(3.0 MB)

**Milling contours are shown here as a DXF file. (Sub D, USB, HDMI, cable glands, ...)**

**Product drawing in PDF format:**

96034224 B-181306-ABS-7024.pdf  
(246.3 KB)

**Product drawing in DXF format:**

96034224 B-181306-ABS-7024.dxf  
(3.8 MB)

### Works test certificates

**688 WPZ-Bocube-PC-V0 DE.pdf**

(184.6 KB)

**688 WPZ-Bocube-PC-V0 EN.pdf**

(179.1 KB)

**689 WPZ-Bocube-ABS DE.pdf**

(165.1 KB)

**689 WPZ-Bocube-ABS EN.pdf**

(160.3 KB)

### Product information

**bocube en.pdf**

(1.5 MB)

31.08.2023

## Matching accessories



Blanking plugs to determine the hinge side

96410004	<b>B VS 7024</b>		Graphite grey
96410005	<b>B VS 7035</b>		Light grey
96410000	<b>B VS 3000</b>		Flame red



DIN rails DIN EN 60715 G 32, galvanised steel

22321501	<b>TS 32.150.1</b>	For EM/ET 220, EM/ET 229-231, EM/ET 238, B 1808.., B 1813..	
----------	--------------------	--	--



DIN rails DIN EN 60715 TH 15, galvanised steel

22151501	<b>TS 15.150.1</b>	For EM/ET 220, EM/ET 229-231, EM/ET 238, B 1808.., B 1813..	
----------	--------------------	--	--



DIN rails DIN EN 60715 TH 35, galvanised steel

22351501	<b>TS 35.150.1</b>	For EM/ET 220, EM/ET 229-231, EM/ET 238, B 1808.., B 1813..	
----------	--------------------	--	--



Front panels, natural-coloured anodised aluminium

96704200	<b>B FP 1813</b>	For B 1813.., front panel thickness 2.0 mm	
----------	------------------	---	--



Hand-operated hinged catch (set), polycarbonate UL 94 V0 or ABS, max. IP66 / IP67

96930203	<b>B SC HB 13 ABS 1023</b>	For B 1413.., B 1813.., B 2213..	Traffic yellow
96930204**	<b>B SC HB 13 ABS 7024</b>	For B 1413.., B 1813.., B 2213..	Graphite grey
96930209	<b>B SC HB 13 ABS 6029</b>	For B 1413.., B 1813.., B 2213..	Mint green
96930202	<b>B SC HB 13 ABS 5002</b>	For B 1413.., B 1813.., B 2213..	Ultramarine blue
96930200	<b>B SC HB 13 ABS 3000</b>	For B 1413.., B 1813.., B 2213..	Flame red



Hinged quick-release catches (Set), polycarbonate UL 94 V0 or ABS

96330203	<b>B SC 13 ABS 1023</b>	For B 1413.., B 1813.., B 2213..	Traffic yellow
96330205	<b>B SC 13 ABS 7035</b>	For B 1413.., B 1813.., B 2213..	Light grey
96330204	<b>B SC 13 ABS 7024</b>	For B 1413.., B 1813.., B 2213..	Graphite grey
96330209	<b>B SC 13 ABS 6029</b>	For B 1413.., B 1813.., B 2213..	Mint green
96330202	<b>B SC 13 ABS</b>	For B 1413.., B 1813.., B 2213..	Ultramarine blue

96330200	5002 B SC 13 ABS 3000	For B 1413.., B 1813.., B 2213..	Flame red
----------	-----------------------------	----------------------------------	-----------



Mast mounting, stainless steel V2A, uncoated

96500122	MH 122	
96500220	MH 220	



Mounting panels, laminated paper, 2 mm

96604200	B M 1813	For B 1813..
----------	----------	--------------



Pressure compensation membrane DAE

52011000	DAE-D11	Self-adhesive membrane ø 11 mm
----------	---------	--------------------------------



Sets of screws

96300000	B SHR	D (for optional screwing of enclosures B 0808 - 2617)
96700000	B FP-SHR	A (for fixing front panels)
96600010	B M-SHR	C (for fixing mounting panels B M 1008-2736)



Wall brackets

96510005	B WL 7035	For B 08... - B 26...	Light grey
96510004	B WL 7024	For B 08... - B 26...	Graphite grey