

## Alu-Topline | Enclosure profiles, horizontally-divided



**ATPH 1865-0200**

**Order no.: 92865200**

\* = Available on request.

### Characteristics

#### Dimensions

181.2 x 68.2 x 200 mm



**BOPLA Digital – now interactive**

#### Colour of enclosure group

Natural-coloured anodised

#### Protection class

IP 40 54

#### NEMA

3

#### Enclosure Material

Extruded profiles: Al Mg Si 0.5 anodised;  
ABS plastic cover; TPE design seal  
For details see "Technical information".

#### Scope of delivery

Enclosure profile, 2 parts

#### Note

Upgradable to IP 54 by fitting AT...DI.

Special lengths on request

23.11.2023

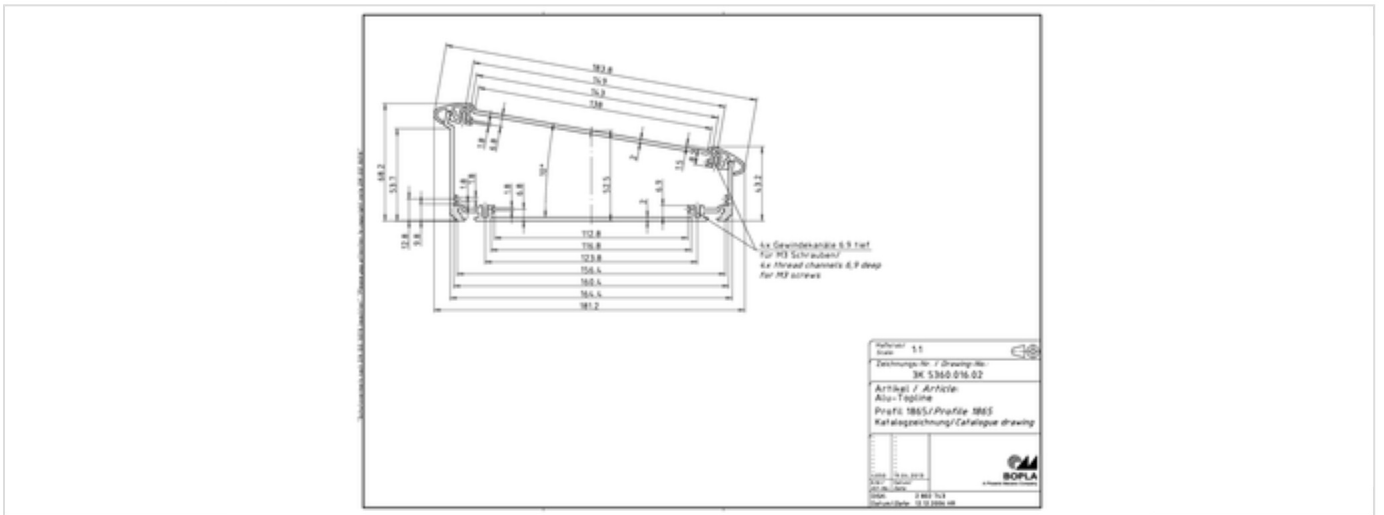
## Important!

To compensate for pressure when temperatures change and cause moisture in the enclosure, we recommend that you use a **pressure compensation** element.

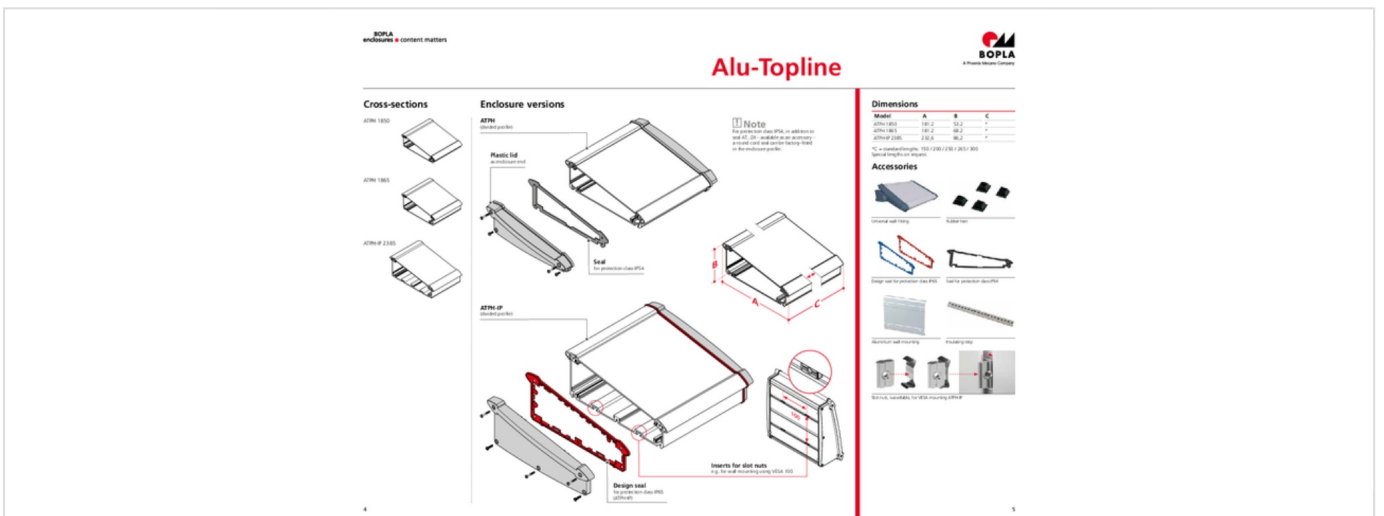
In order to ensure that you can determine **the correct quantity of elements for your application**, we are providing you here with a DAE calculator.

» [Additional information](#)

## Product drawing



## Enclosure concept



## Technical documentation / Downloads

### 3D product data in STEP format:

Login to download

### Drawing for mechanical processing:

92865200 ATPH-1865-0200-G.dxf

(422.8 KB)

Milling contours are shown here as a DXF file. (Sub D, USB, HDMI, cable glands, ...)

### Product drawing in PDF format:

92865200 ATPH-1865-0200.pdf

(42.0 KB)

### Product drawing in DXF format:

92865200 ATPH-1865-0200.dxf

(497.0 KB)

## Product information

### alu-topline en.pdf

(720.2 KB)

## Matching accessories

---



### End cover

92065024

ATD 1865-7024

For ATPH 1865

Graphite grey

92065005

ATD 1865-9005

For ATPH 1865

Black



### Insulating strip for PCB mounting on the profile

92000100

AT-IS 00020

Length: 101,5 mm



### Rubber feet

84006700

AB - GF

Polyurethane, 65-75 Shore

Black



### Seals for ingress protection IP 54

92065000

AT 1865 DI

For ATPH 1865



Universal wall fitting

92820024

AT 0200-7024 UWB

For ATPH 18..-0200

Graphite grey



Wall fastening, aluminium

92800200

AT 1800-0200 WB

For ATPH 18..-0200