

Alubos | ABPU 1040



ABPU 1040-1000
Order no.: 84047000

* = Available on request.



Characteristics

Dimensions

108 x 42 x 1000 mm

Colour of enclosure group

Black, similar to RAL 9005

Protection class

IP 40

NEMA

1

Enclosure Material

Extruded profiles: Al Mg Si 0.5 powder-coated; diecast lid: GB Al Si 12, powder-coated; seal: TPE; for details see Technical Information

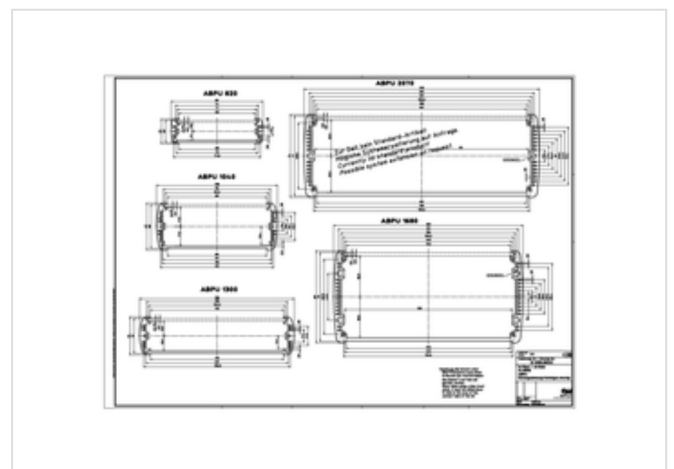
Scope of delivery

Enclosure profile. Please order front panel for ABPU separately.

Note

C = profile length, special lengths on request.

Product drawing



Enclosure concept

Alubos

Profile cross-sections

- AL 400
- AL 800 / AL 800 / AL 800
- AL 1000
- AL 1500
- AL 1500
- AL 1500
- AL 1500 / AL 1500
- AL 2000

Enclosure versions

- ABM (standard)
- ABM K (front panel with four slots)
- ABP (standard)
- ABPU (open on one side)
- ABM FAL (front panel with four slots)
- ABM SAL (standard)
- ABM SAL BE (standard)

Lid variants

- ALD
- ABM AL / ABM AL
- ABM AL BE / ABM AL BE
- ABM SAL
- ABM SAL BE

Dimensions

Model	A	B	C
AL 400	400	42	1000
AL 800	800	42	1000
AL 1000	1000	42	1000
AL 1500	1500	42	1000
AL 2000	2000	42	1000

Profile variants

Model	ABM	ABM K	ABP	ABPU	ABM FAL	ABM SAL	ABM SAL BE
AL 400	✓	✓	✓	✓	✓	✓	✓
AL 800	✓	✓	✓	✓	✓	✓	✓
AL 1000	✓	✓	✓	✓	✓	✓	✓
AL 1500	✓	✓	✓	✓	✓	✓	✓
AL 2000	✓	✓	✓	✓	✓	✓	✓

Lid variants

Model	ALD	ABM AL	ABM AL BE	ABM SAL	ABM SAL BE
AL 400	✓	✓	✓	✓	✓
AL 800	✓	✓	✓	✓	✓
AL 1000	✓	✓	✓	✓	✓
AL 1500	✓	✓	✓	✓	✓
AL 2000	✓	✓	✓	✓	✓

Accessories

- ABM SAL
- ABM SAL BE
- ABM SAL
- ABM SAL BE

Important!

27.11.2023

To compensate for pressure when temperatures change and cause moisture in the enclosure, we recommend that you use a [pressure compensation](#) element.

In order to ensure that you can determine **the correct quantity of elements for your application**, we are providing you here with a DAE calculator.

[» Additional information](#)

Technical documentation / Downloads

Technical drawings

3D product data in STEP format:

Login to download

Drawing for mechanical processing:

84047000 ABPU-1040-1000-G.dxf
(633.5 KB)

Milling contours are shown here as a DXF file. (Sub D, USB, HDMI, cable glands, ...)

Product drawing in PDF format:

84047000 ABPU-1040-1000.pdf
(84.1 KB)

Product drawing in DXF format:

84047000 ABPU-1040-1000.dxf
(3.8 MB)

Product information

alubos en.pdf

(2.4 MB)

Matching accessories



EMC seals

84200415

DI 1040-EMV

For AB 1040



End cover

84041000

ABD 1040

For AB 1040



Front panels, natural-coloured anodised aluminium

84048000 **ABPU** For ABPU 1040-1000, 2 mm
1040-1000
FP2



Mounting clamps

84006510 **AB 1040 MKL** For AB 1040



Mounting lid with hinged aluminium flap

84044000 **ABM 1040** For AB 1040
SAL



Seals UL 94 V0

84200419* **DI 1040-V0** For AB 1040



Seals, fire red

84200411 **DI 1040-3000** For AB 1040



Seals, patina green

84200413 **DI 1040-6000** For AB 1040



Seals, rape yellow

