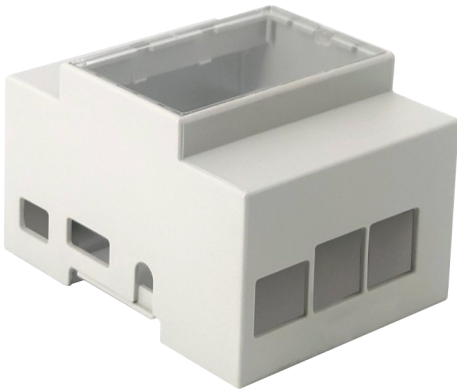
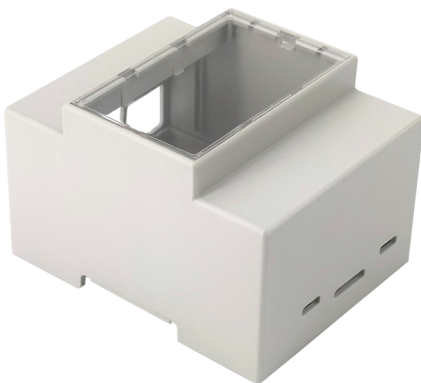


RB-CASE+07

Plastic DIN rail case for Raspberry Pi 2 B/ 3 B/ 3 B+



With this case you can easily mount your Raspberry Pi to a DIN rail and connect it with other devices.



MAIN FEATURES

Material	Polyphenylene ether, UL94-V0, self-extinguishing
Color	white
Compatible with	Raspberry Pi 2 B/3 B/3 B+
Special features	Space for additional components Transparent, detachable panel for quick and easy access Cut-outs for every interface
Assembly	mountable on a DIN rail
Size	91 x 72 x 62 mm
Items delivered	RB-Case+07

FURTHER DETAILS

Article No.	RB-Case+07
EAN:	4250236814711
Customs Tariff No.	8473308000