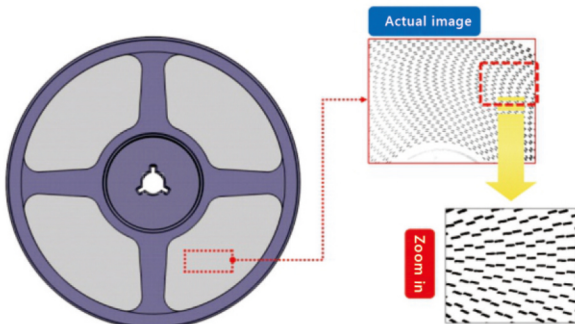


XC1000

XC1000 is a full-automatic micro-focus X-ray counting machine. It uses X-Ray fluorescence principle and independently developed algorithm software with AI function, which can quickly and accurately calculate the number of materials in the material reel. It also has MES Data upload and automatic printing of material labels, which can achieve the function of improving work efficiency and saving manpower.

Product Features

- ▶ Compared with traditional counting/pouring machine, there is no need to unpack or transfer the reel.
- ▶ Suitable for all types of chip components, SMD components above 01005.
- ▶ Accuracy of counting reaches more than 99.99%, it can realize automatic counting
- ▶ Countable reel diameter is 7-15 inches.
- ▶ Innovative detection environment and algorithm with AI function.
- ▶ Designed with reference to human mechanics, seated operation, the monitor is at the same height as the human eye, protects the cervical spine, is not easy to fatigue, occupies a small space, and can be used in any position.
- ▶ The platform automatically enters and exits, which is convenient for material taking, automatic platform grating induction, torque control, anti-pinch hand.
- ▶ An error-proof mechanism for material labels, full induction recognition of material reels, real-time docking with printers, and printing of material information immediately if the reel is taken away.
- ▶ Connect with MES/ERP/WMS and other system data, real-time data interactive, timely upload and update of material information,
- ▶ Real-time database storage and MES data upload
- ▶ Can recognize 1D or 2D codes
- ▶ Four groups of cameras realize automatic scanning function (optional)
- ▶ The equipment automatically recognizes single or four-reel material



Product Parameters

Model No		XC1000
X-Ray Tube	X-Ray Tube Type	Reflective sealed micro-focus X-ray source
	Tube Voltage	30-80KV
	Tube Current	200-700μA
	Maximum Output Power	56W
	Micro Focus Size	30-40μm
Flat Panel Detector	Flat Panel Type	Amorphous silicon flat panel detector
	Pixel Matrix	3072x3072
	Field of View	427mmx427mm
	AD Conversion Digits	16bits
Equipment Specifications	Reel Diameter	7"-15" Tape Reel
	Reel Height	<80mm
	Minimum Component	01005
	System Docking	MES/ERP/WMS
	Label Printing	TSC Industrial Printer
	Input Power	220V 10A 50-60HZ
	Operation System	Win7 (Win10 is optional)
	Dimensions	L800mmxW1280mmxH2200mm
	Net Weight	About 790KG