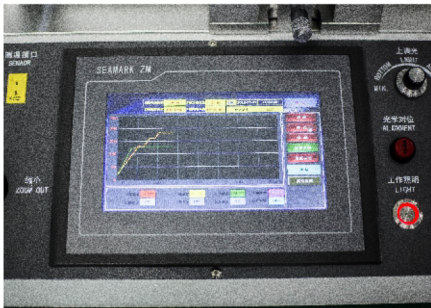


R7220A

Optical Alignment Rework Equipment

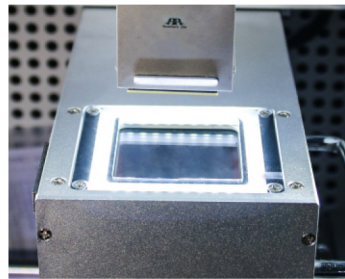
Real-time Temperature Monitoring

Real-time temperature display, with automatic curve analysis function.



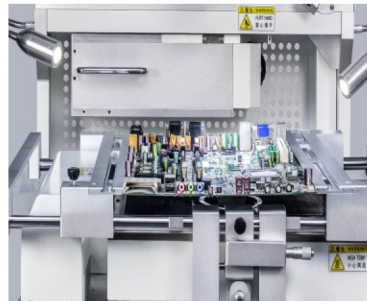
Optical Alignment System

High-definition CCD (2M pixels) digital imaging, automatic optical zoom system, manual control and laser red-dot alignment.



Rapid Heating and Cooling

The IR preheating zone is heated by a medium wave ceramic infrared heating plate, a multi-functional movable PCB fixing bracket and a BGA bottom support frame. Laminar integrated cooling fan.



Product Parameters

Model No.	R7220A
Power Supply	AC220V±10% 50/60Hz
Power	Power 5.65KW(Max) Top heater(1.45KW) Bottom heater(1.2KW) IR Preheater(2.7KW)
PCB Size	412×370mm(Max) ; 6×6mm(Min)
BGA Chip Size	60×60mm(Max) ; 2×2mm(Min)
IR Temp. Zone Size	285×375mm
External Temp. Sensor	1 PCS
Operation Method	7" HD touch screen
Control System	Autonomous heating control system V2(with software copyright)
Display System	15"SD industrial display(720P front screen)
Alignment System	2M pixels SD digital imaging system, automatic optical zoom with laser red-dot indicator
Vacuum adsorption	Automatic
Alignment Accuracy	±0.02mm
Temp. Control	K-type thermocouple closed-loop control with accuracy up to ±3°C
Feeding Device	No
Positioning	V-groove with universal fixture
Dimensions	L685×W633×H850mm
Weight	76KG