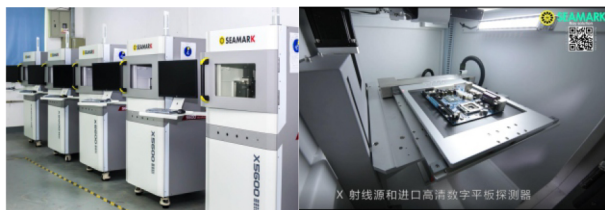


X5600

X5600 is a small precision micro-focus X-ray inspection equipment, which is suitable for R&D enterprise laboratories, offices, and quality laboratories etc., and is the first choice for X-ray inspection of tiny, small and medium precision components.

Product Features

- ▶ Miniaturized equipment, easy to install and use
- ▶ Applied to the inspection of chips, BGA/CSP, wafers, SOP/QFN, SMT and PTU packages, sensors, etc.
- ▶ High-resolution design for the best possible image in a fraction of the time
- ▶ Automatic infrared navigation and positioning, quickly select the shooting position
- ▶ CNC inspection mode for fast automatic inspection of multi-point arrays
- ▶ Multi-angle tilt inspection makes it easier to inspect sample defects
- ▶ Software operation is simple and easy to use, low operating cost
- ▶ Durable service life



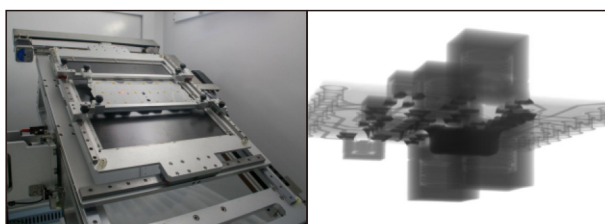
Tilt Photo/Rotate Photo Function

■ Tilt perspective detection function

It has the function of tilting camera. For pictures taken from the front of a special device, if the defect features cannot be identified, the tilting camera function can be used to observe the features of the device from multiple angles, which is easier to analyze and identify the defect content.

■ 360° rotation photo detection function

Equipped with a rotating manipulator, it can rotate 360 degrees to take pictures, and there is no dead angle observation defect.



Product Parameters

Model No.		X5600
X-Ray Tube	X-Ray Tube Type	Reflective sealed micro-focus X-ray source
	Tube Voltage	40-90KV
	Tube Current	10-200μA
	Maximum Output Power	8W
	Micro Focus Size	15μm
Flat Panel Detector	Flat Panel Type	TFT Industrial Dynamic flat panel detector
	Pixel Matrix	768X768/1536X1536
	Field of View	65mmx65mm/130mmx130mm
	Resolution	5.8Lp/mm
	Image Frame Rate (1x1)	20-40fps
	AD Conversion Digits	16bits
	Equipment Specifications	Input Power
Operation System		Industrial Computer Win7 (Win10 optional) 64 bits
Maximum Sample Size		280mm×320mm
Dimensions		L850mm×W1000mm×H1700mm
Net Weight		About 750KG