

X6600H

X6600H is a cost-effective general-purpose offline precision micro-focus X-ray inspection equipment, suitable for the inspection of various types of factory offline products. It has the characteristics of high magnification, multi-angle inspection, and large-area inspection platform.

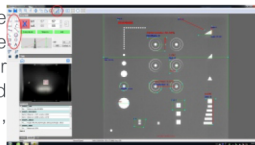
Product Features

- ▶ Meets general x-ray inspection needs, with a wide range of applications
- ▶ High-resolution design to get the best image fast
- ▶ Laser automatic navigation and positioning, quickly select the shooting position
- ▶ CNC inspection mode for fast automatic inspection of multi-point arrays
- ▶ Multi-angle tilting inspection makes it easier to detect sample defects
- ▶ Software operation is simple and easy to use, low operating cost
- ▶ The X-ray tube and flat panel can be rotated at the same time (0-60°), making the inspection image clearer and more intuitive
- ▶ Real-time monitoring of radiation value, multiple protection of operator's personal safety
- ▶ Rocker mechanism, easy to operate and good maneuverability

Size Measurement

Measuring Tool:

Distance, distance ratio, line spacing, angle, arrow mark, circle radius, point distance, circle center distance, perimeter, hand-painted polygon, hand-painted freeform, etc., can be added with text description.



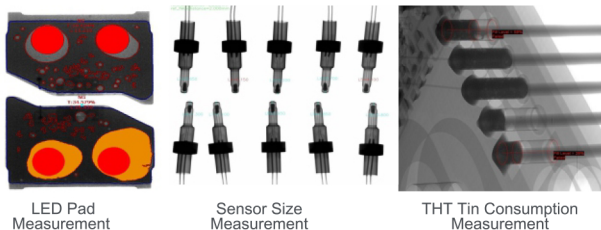
Defect Inspection

Automatic Defect Recognition

Defects such as size, area, wire breakage, and tin connection can be identified.

Customizable Image Algorithm

Develop specific software algorithms according to the customer's product characteristics and requirements, To realize the automatic defect recognition and inspection function, including the presence or absence, crack, broken line, offset, size, number and other recognition algorithms.



LED Pad Measurement

Sensor Size Measurement

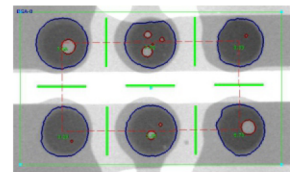
THT Tin Consumption Measurement



Automatic Void Ratio Calculation

Enhanced BGA Extending Inspection Function

It can quickly select and mark a single soldering ball, or select the soldering balls to be inspected in a matrix, and can manually or automatically identify the BGA soldering balls and complete the inspection. Follow the system guidelines to easily complete the inspection process and ensure accurate and reliable inspection results.



Product Parameters

Model No.		X6600H
X-Ray Tube	X-Ray Tube Type	Reflective sealed micro-focus X-ray source
	Tube Voltage	40-90KV
	Tube Current	10-200μA
	Maximum Output Power	8W
	Micro Focus Size	5~15μm
Flat Panel Detector	Flat Panel Type	Amorphous Silicon Flat Panel Detector
	Pixel Matrix	1536x1536
	Field of View	130mmx130mm
	Resolution	5.8Lp/mm
	Image Frame Rate (1x1)	20fps
	AD Conversion Digits	16bits
Equipment Specifications	Input Power	220V 10A/110V 15A 50-60Hz
	Operation System	Industrial Computer Win7 (Win10 optional) 64 bits
	Maximum Sample Size	540mm×440mm
	Dimensions	L1245mm×W1230mm×H1900mm
	Net Weight	About 1170KG