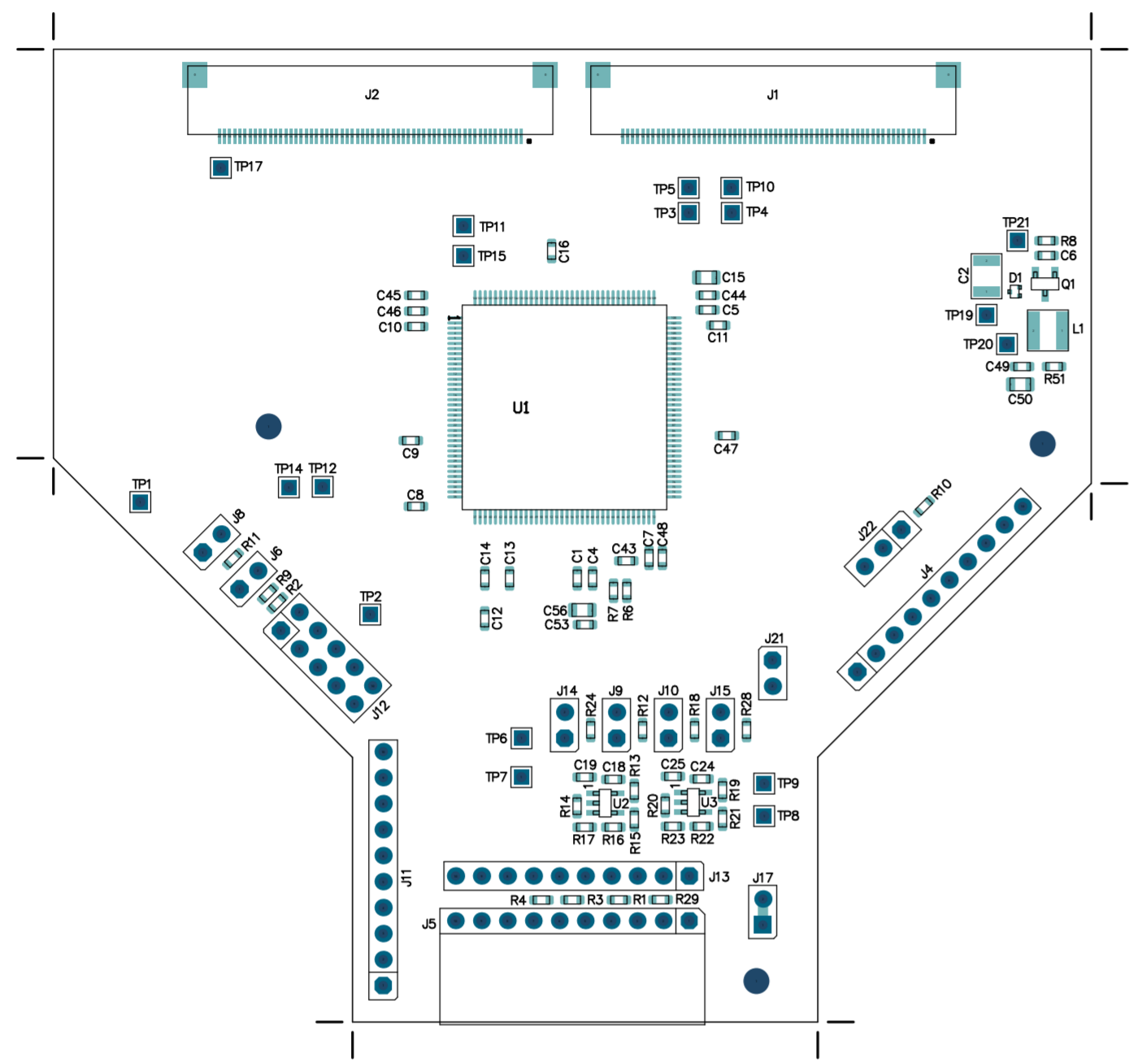



REV	ECO	Comments	Date
A0	N/A	First Issue	19th April 2017
1	N/A	TP21 added. RoHS, WEEE, CE idents added.	6th June 2018
2	N/A	Number changed per Dev Tools ATM, USB circuitry removed, force circuitry removed, power test headers reworked to suit Keysight tester.	1st June 2020



**ASSEMBLY NOTES:**

1. ALL COMPONENTS SHALL BE RoHS COMPLIANT.
2. ALL UNUSED THROUGH HOLE COMPONENT LOCATIONS SHALL BE FREE OF SOLDER.
3. ALL TEST POINT THROUGH HOLES (DENOTED TPxx) SHALL BE FREE OF SOLDER.
4. ALL COMPONENTS SHALL BE MOUNTED FLUSH TO THE BOARD, EXCEPT AS NOTED.
5. FINISHED BOARD SHALL BE FREE OF ALL RESIDUES.
6. ALL LEADS SHALL BE TRIMMED TO A MAXIMUM HEIGHT OF 2mm.
7. PLACE LABELS ON THE LOCATION INDICATED.

 <p><b>MICROCHIP</b> Microchip Technology Inc. 2355 W. Chandler Blvd. Chandler, AZ 85224</p>	<b>TITLE:</b> <b>ATMXT2113TD-AT EVK SPI Control Board</b>		<b>PART NUMBER:</b> 10932-2	
	<b>ASSEMBLY VARIANT:</b> 10932-2		<b>GERBER FILE:</b> Top Assembly Drawing	
	<b>PCB DESIGNER:</b> Patrick Cassidy	<b>ENGINEER:</b> Patrick Cassidy	<b>BOARD NUMBER:</b> 04-10932 <b>LAYER NAME:</b> Top Assembly (M11)	<b>DOCUMENT NUMBER:</b> 02-10932-2-D <b>DATE:</b> 16/06/2020 <b>REV:</b> 2
	<b>PCB FILE NAME:</b> 10932.PcbDoc		10mm 400mil	

A

A

B

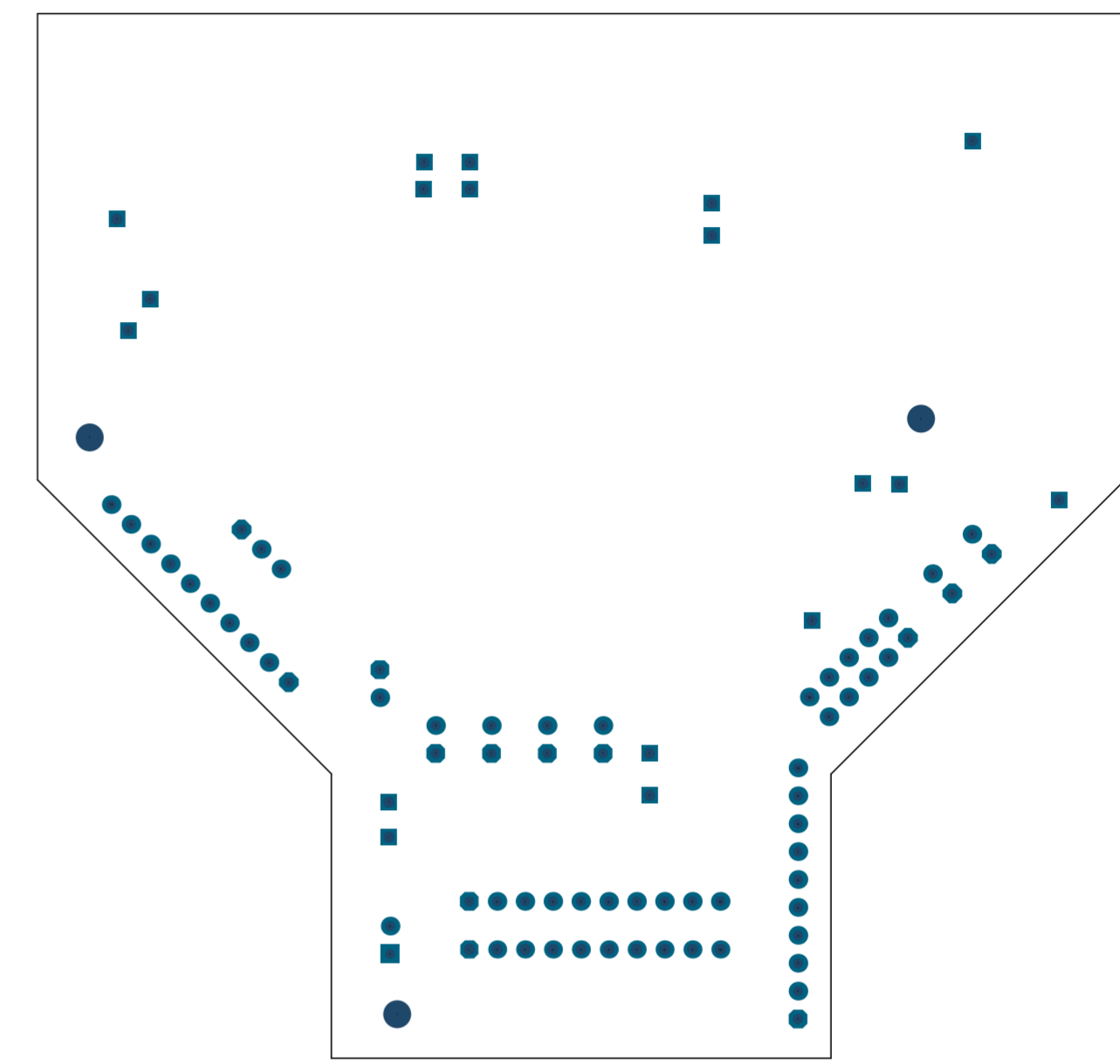
B


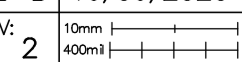
C

C

D

D



 <b>MICROCHIP</b> Microchip Technology Inc. 2355 W. Chandler Blvd. Chandler, AZ 85224	TITLE: <b>ATMXT2113TD-AT EVK SPI Control Board</b>		PART NUMBER: 10932-2		
	PCB DESIGNER: Patrick Cassidy		GERBER FILE: Bottom Assembly Drawing		
	ENGINEER: Patrick Cassidy	BOARD NUMBER: 04-10932	DOCUMENT NUMBER: 02-10932-2-D	DATE: 16/06/2020	
	PCB FILE NAME: 10932.PcbDoc	LAYER NAME: Bottom Assembly (M10)	REV: 2		

1

2

5

6

J2

J1

TP17  
DS0

mXT2113TDAT LQFP144  
EVK Control Board  
04-10932-R2

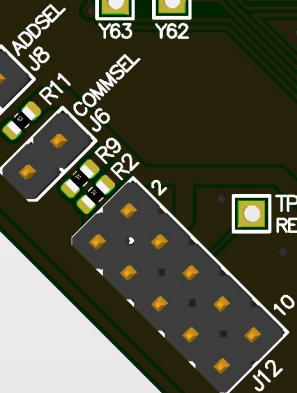
© 2020 Microchip Technology Inc



H1

TP1  
GND

TP14  
Y63  
TP12  
Y62

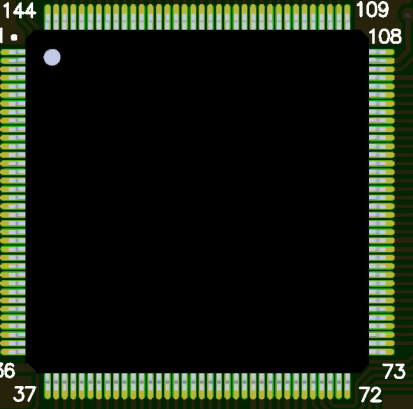


TP2  
RESET



J11

TP11  
X31  
TP15  
X32



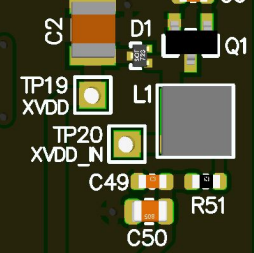
TP5  
X1  
TP3  
X0  
TP10  
Y1  
TP4  
Y0

C16

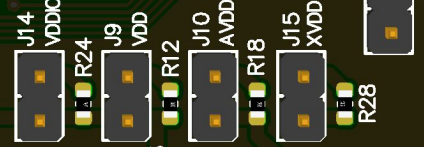
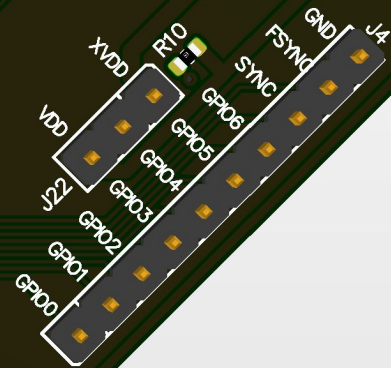
C15  
C44  
C5

C47

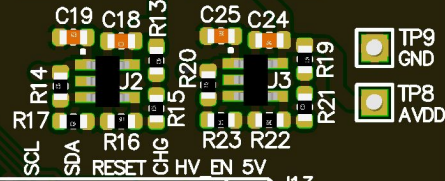
TP21  
VREGBOOST



H3



TP6  
VDD  
TP7  
GND



TP9  
GND  
TP8  
AVDD



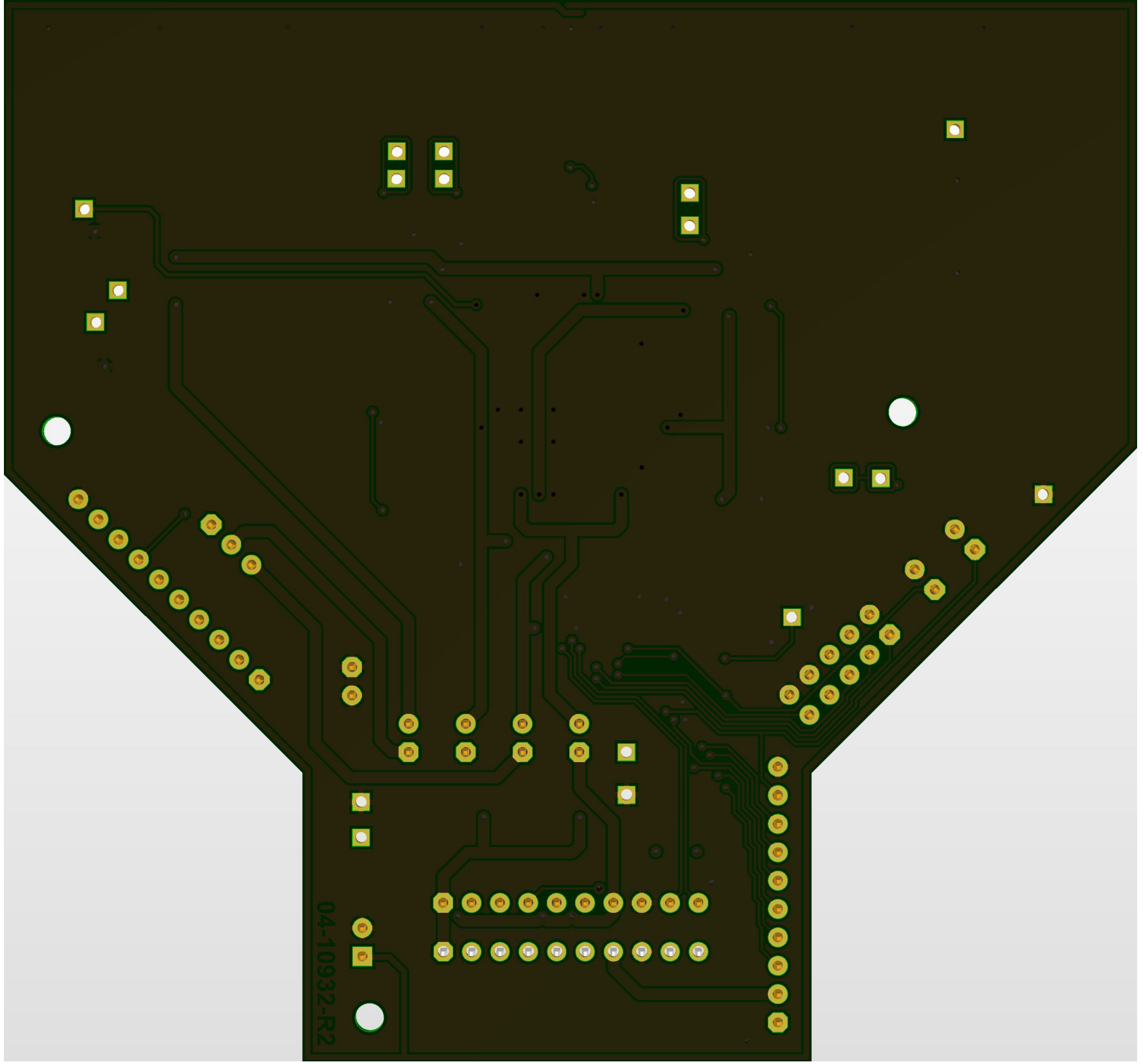
J13

J17

J5

H2

04-10932-R2



04-10932-R2