

Material:
 * Insulation: Glass filled polyester UL 94V-0
 * Contact: Phosphor Bronze

Ordering Code:

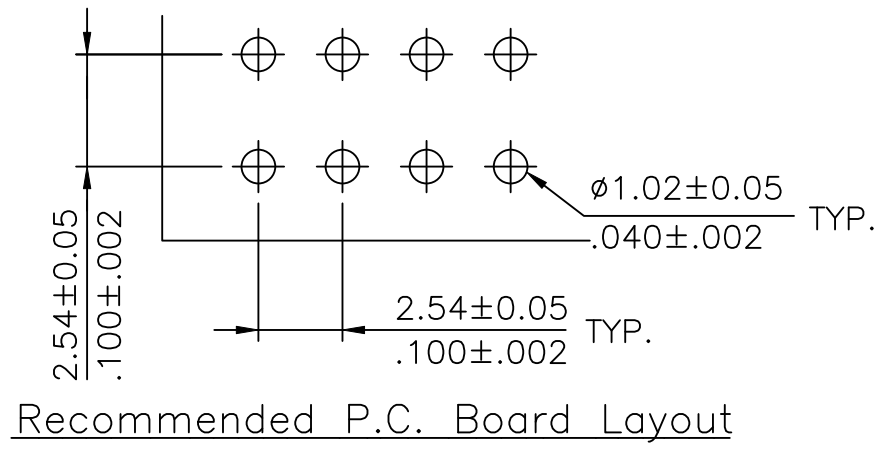
CB96 ** 2 V 1 00
 ① ② ③ ④ ⑤ ⑥

- ① Series No.
- ② NO. of Circuits:
- ③ Plating code:
2=Gold flash plated over Nickel
- ④ Tail Style: V= Straight
- ⑤ Color: 1= Black
- ⑥ Other options: 00= Standard

Option Code	Dimension	
	C	D
00	11.05(.435)	2.3(.091)
1Y	11.05(.435)	7.3(.287)
2Y	13.59(.535)	4.8(.189)
3Y	16.13(.635)	2.3(.091)
4Y	18.67(.735)	2.3(.091)
5Y	15.50(.610)	2.70(.106)
1Z	11.05(.435)	12.2(.480)
2Z	13.59(.535)	9.6(.378)
3Z	16.13(.635)	7.1(.280)
4Z	18.67(.735)	4.6(.181)
2W	13.59(.535)	3.4(.134)
2V	13.58(.535)	3.00(.118)
1A	12.50(.492)	3.00(.118)

CIRCUITS	DIM.F
6~50P	0.20 Max.
52~80P	0.30 Max.

A = 2.54 * No. of Spaces
 B = A + 3.04
 * Available in 6 through 80 circuits



Tin-Lead Process

RoHS Compliant

$\Delta 5$	Jessie	11/15-23	ECRT123079/ECNT123245		DATE	UNIT: mm / inch	TITLE: 2.54MM(.100")	 瀚荃股份有限公司 CviLux Corporation
$\Delta 4$	Sun	12/20-19	ECNT119368	DRAWN BY: Jessie	12/12-23'	TOLERANCE UNLESS OTHERWISE SPECIFIED	DUAL ROW ELEVATED CONNECTOR	
$\Delta 3$	Ken	6/22-18'	ECNT118141	ENGINEER: Sun	12/12-23'	.X $\pm 0.30 / .012$ X' $\pm 1'$	MATERIAL:	DRAWING NO. CB9601SI
$\Delta 2$	Karen	9/30-09'	ECN09203	CHECKED BY: Eisley	12/12-23'	.XX $\pm 0.20 / .008$.X' \pm	FINISH:	PART NO. CB96**2V1**
SYM	NAME	DATE	REVISIONS	APPROVED BY: Eisley	12/12-23'	.XXX $\pm 0.10 / .004$.XX' \pm		SCALE 3 / 1
								SHEET 1 OF 1

