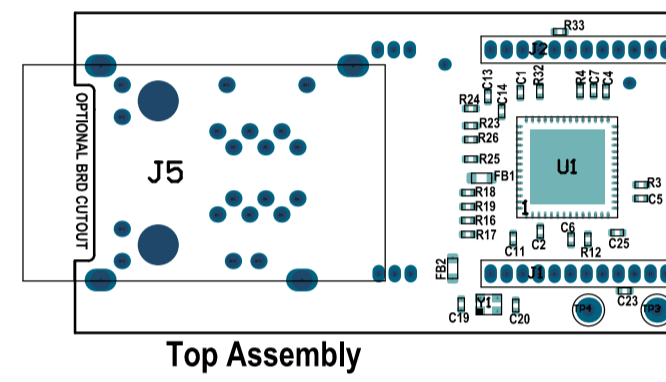



REV	ECO	Comments	Date
1		DEVTOOLS TRANSFER	10/19/2022



ASSEMBLY NOTES:

1. ALL COMPONENTS SHALL BE RoHS COMPLIANT.
2. ALL UNUSED THROUGH HOLE COMPONENT LOCATIONS SHALL BE FREE OF SOLDER.
3. ALL COMPONENTS SHALL BE MOUNTED FLUSH TO THE BOARD, EXCEPT AS NOTED.
4. FINISHED BOARD SHALL BE FREE OF ALL RESIDUES.
5. ALL LEADS SHALL BE TRIMMED TO A MAXIMUM HEIGHT OF 2mm
6. PLACE LABEL BACKSIDE AT THE LOCATION INDICATED.
8. PLACE RUBBER BUMPS BACK SIDE 4 PLACES EACH CORNER.
9. PRODUCT SHALL BE ASSEMBLED USING ONLY RoHS3 (EU Directive 2015/863) AND REACH 209 COMPLIANT MANUFACTURING PROCESSES AND MATERIALS. EACH BUILD SHALL SHIP WITH A VALID CERTIFICATE OF COMPLIANCE FOR REACH 209 AND RoHS3, INCLUDING VALID CERTIFICATES FOR THE PCBs USED FOR THE BUILD.

 MICROCHIP Microchip Technology Inc. 2355 W. Chandler Blvd. Chandler, AZ 85224	ASSEMBLY VARIANT: (No Variations)		PART NUMBER: EV11S96A
	LAN9354 PHY Switch Daughter board		
	PCB Layout Contact: Brigham Steele	GERBER FILE: Top Assembly Drawing	
	Project Owner Brigham Steele	BOARD NUMBER: 04-11627	DOCUMENT NUMBER: 02-00531-D
PCB FILE NAME: UNG_11627_LAN9354_._PcbDoc	LAYER NAME: Top Assembly	REV: 1	10mm 400mil

1 2 3 4 5 6 7 8

REV	ECO	Comments	Date

A

A

B

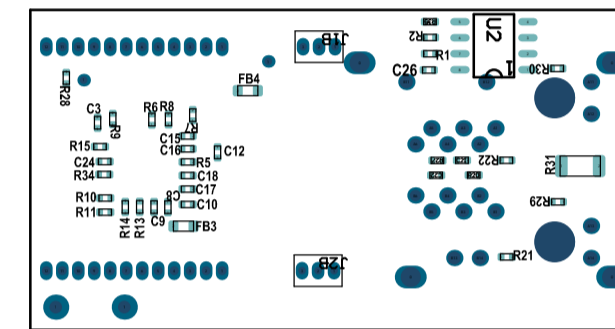
B


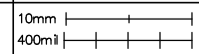
C

C

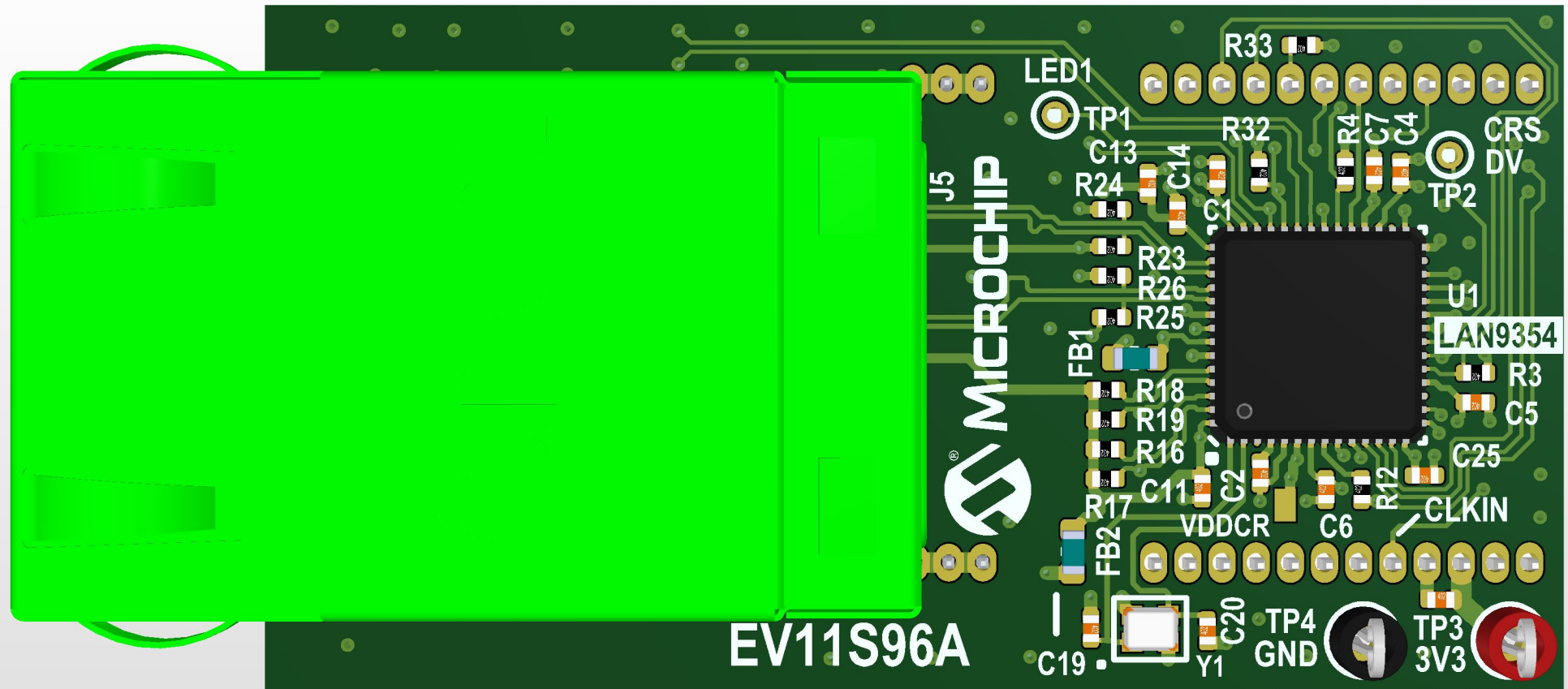
D

D

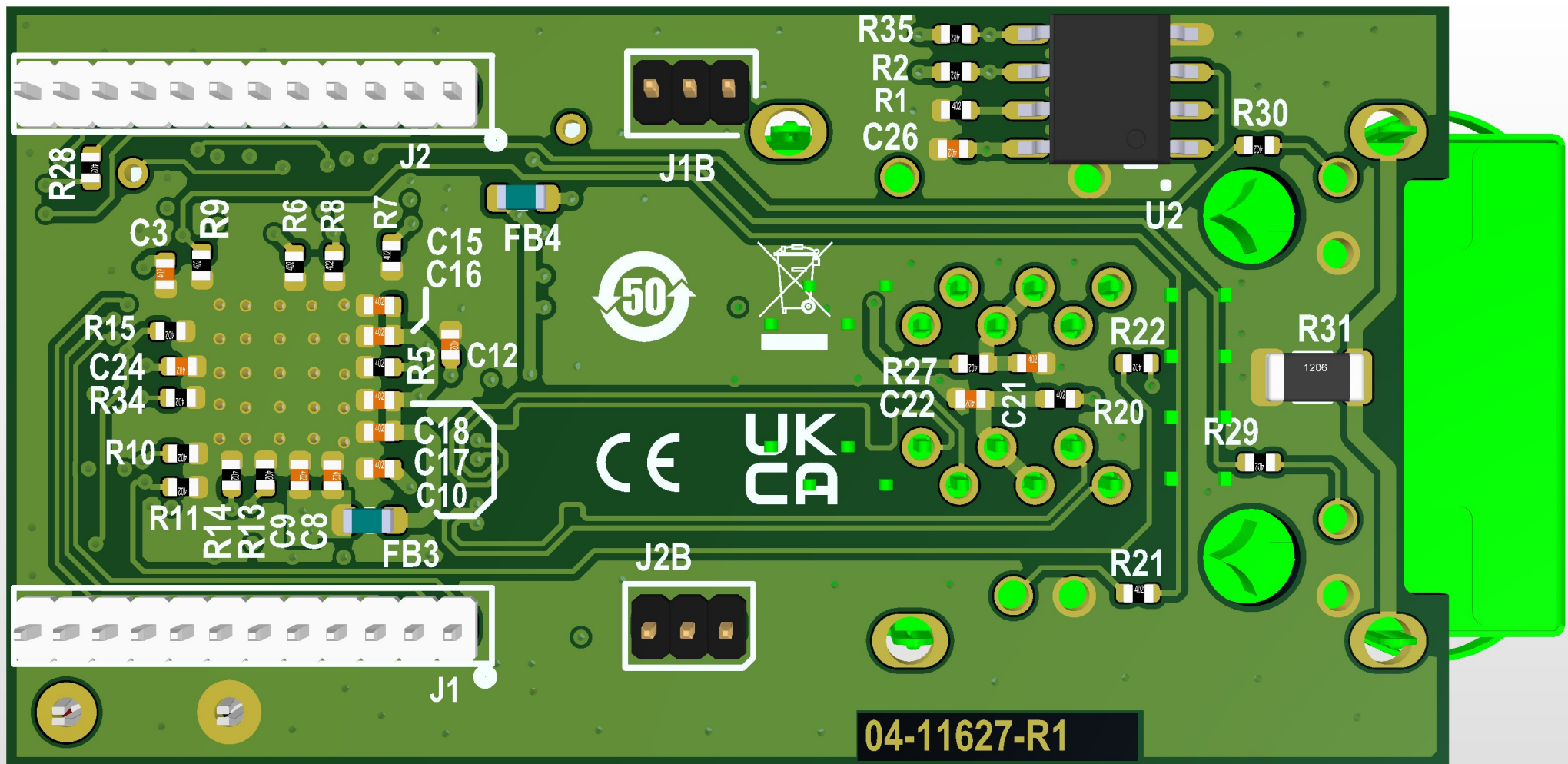


 MICROCHIP Microchip Technology Inc. 2355 W. Chandler Blvd. Chandler, AZ 85224	TITLE: LAN9354 PHY Switch Daughter board		PART NUMBER: EV11S96A	
	PCB Layout Contact: Brigham Steele	GERBER FILE: Bottom Assembly Drawing		
	Project Owner: Brigham Steele	BOARD NUMBER: 04-11627	DOCUMENT NUMBER: 02-00531-D	DATE: 10/31/2022
	PCB FILE NAME: UNG_11627_LAN9354_._PcbDoc	LAYER NAME: Bottom Assembly	REV: 1	

1 2 3 4 5 6 7 8



Boo Overlay 4



50

CE

UK
CA

1206