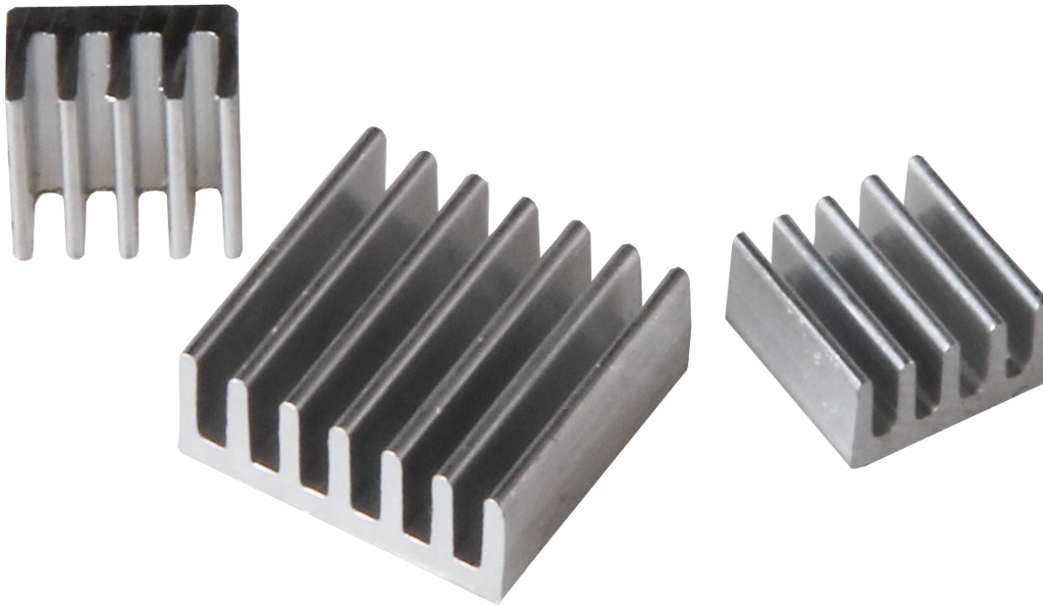


HEAT SINK SET

Heat sink set for single board computers



1. GENERAL INFORMATION

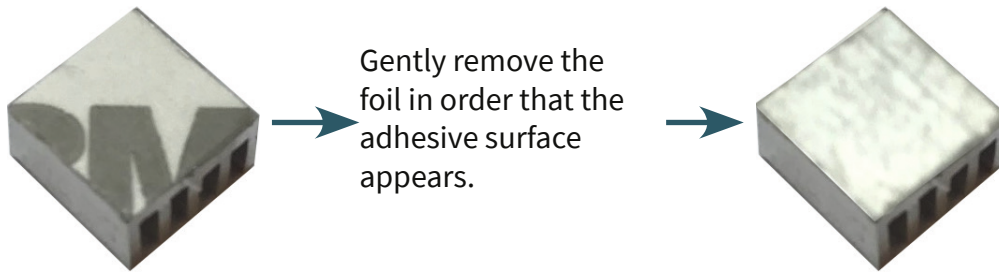
Dear customer,

thank you for choosing our product. In the following, we will show you how to use your product.

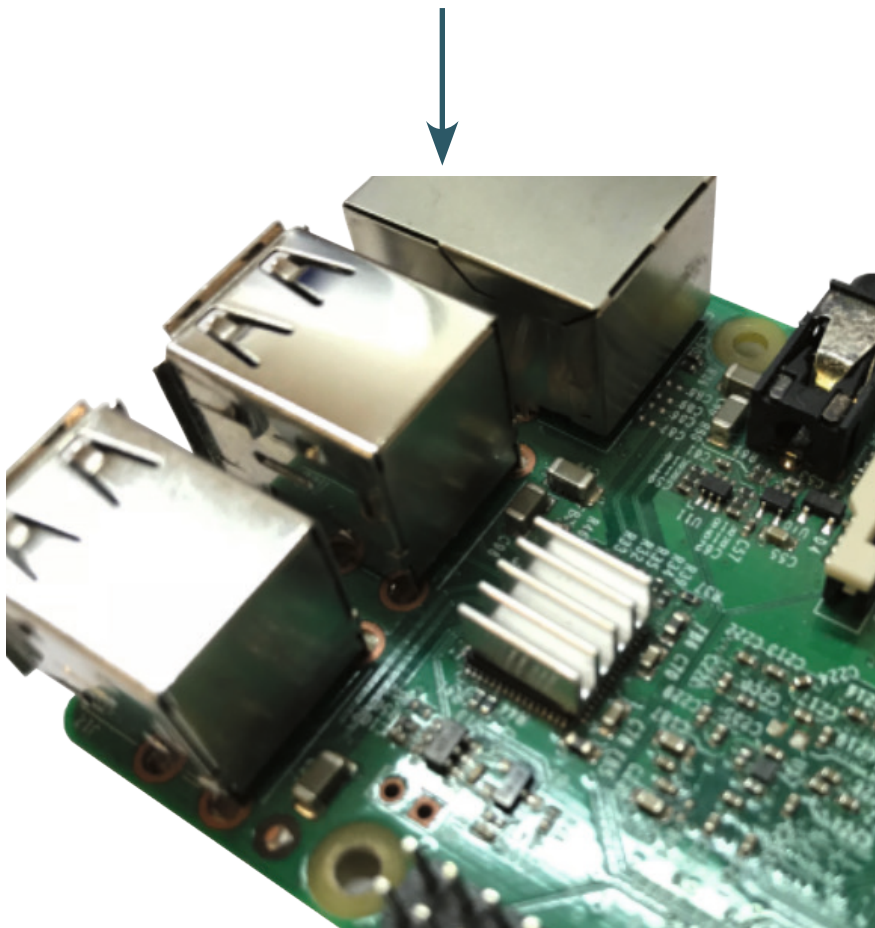
Should you encounter any unexpected problems during use, please do not hesitate to contact us.

This heat sink set for all Raspberry Pis, BananaPi, pcDuino and other single board computers consists of 3 adhesive heat sinks. That way you can protect your device perfectly for high temperature conditions or if your CPU is overclocked for thermal issues.

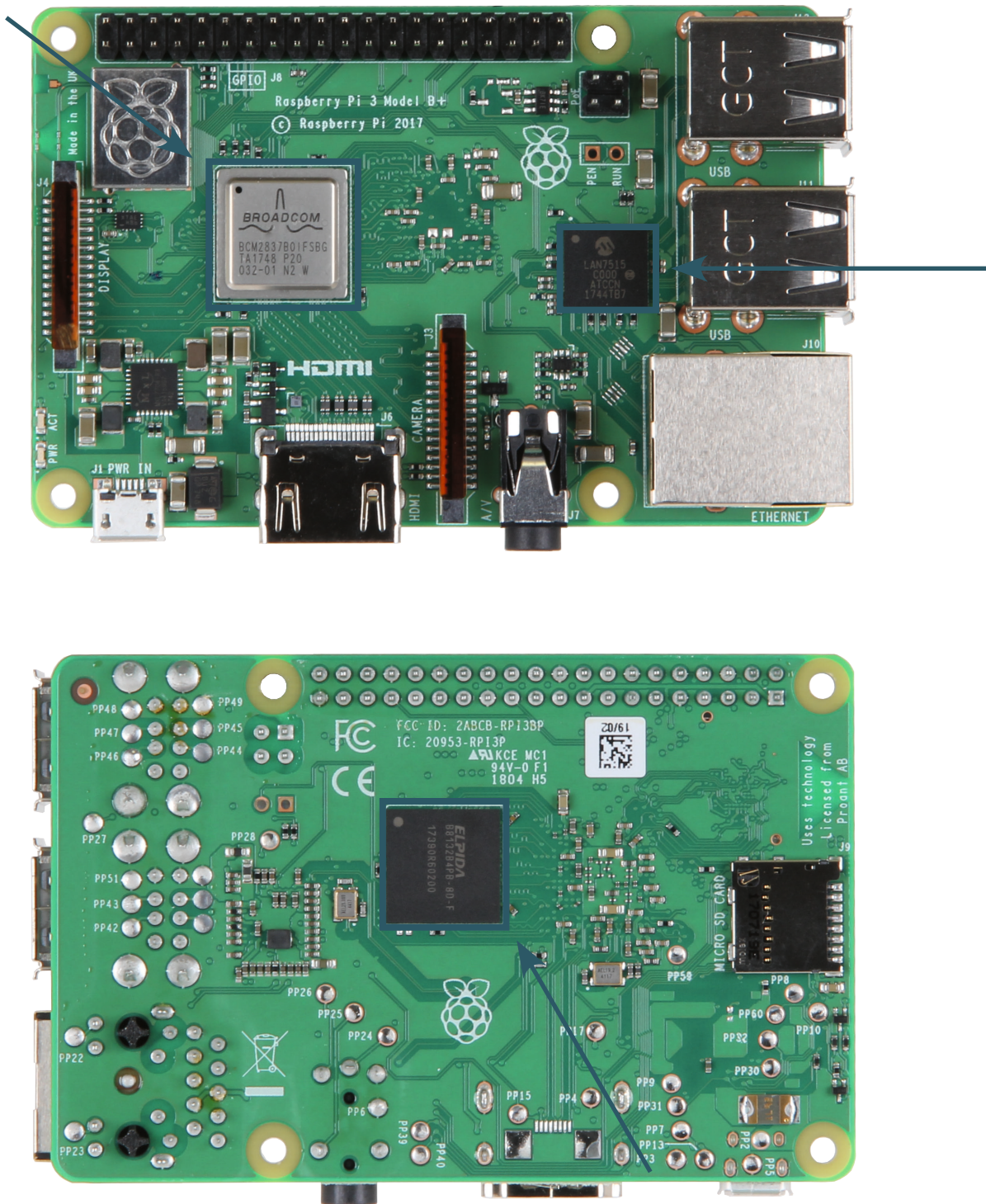
2. INSTALLATION



Now press the heat sink with light pressure on the chip so that the adhesive surface is pointing to the board.



3. EXAMPLE RASPBERRY PI 3B+



The possibility of the mounting at the bottom of the Raspberry Pi depends on the capabilities of the used case.

4. SUPPORT

If any questions remain open or problems arise after your purchase, we are available by e-mail, telephone and ticket support system to answer these.

E-Mail: service@joy-it.net

Ticket-System: <http://support.joy-it.net>

Telephone: +49 (0)2845 98469 – 66 (10 - 17 o'clock)

For further information visit our website:

www.joy-it.net