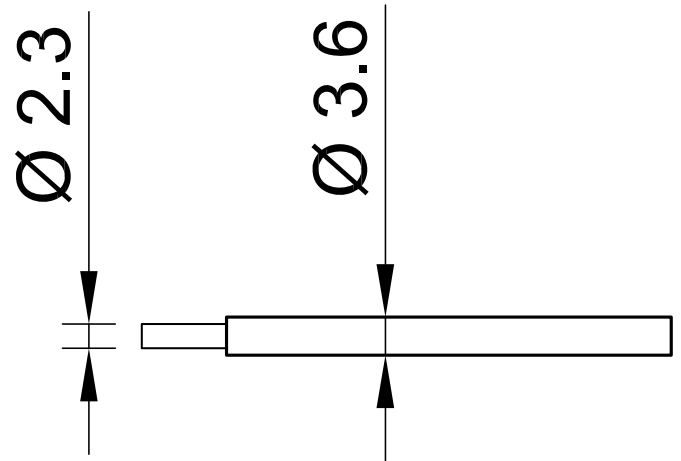


PLAST-E 2,5



Item number 60.7200-*

Highly flexible basic insulated stranded wire 2,5 mm².

Technical data	
Rated Values	AC 750 V, 32 A
Standard color(s) *	21 22 23 25 29
Lead insulation	TPE
Temperature range	-30 °C ... +90 °C
Strand design (n x Ø mm)	651 x 0,07
Lead weight	29.0 kg/km
Conductor diameter	2.3 mm
Cable diameter	3.6 mm
Insulation thickness	0.65 mm
Approvals	CE, UKCA, EAC