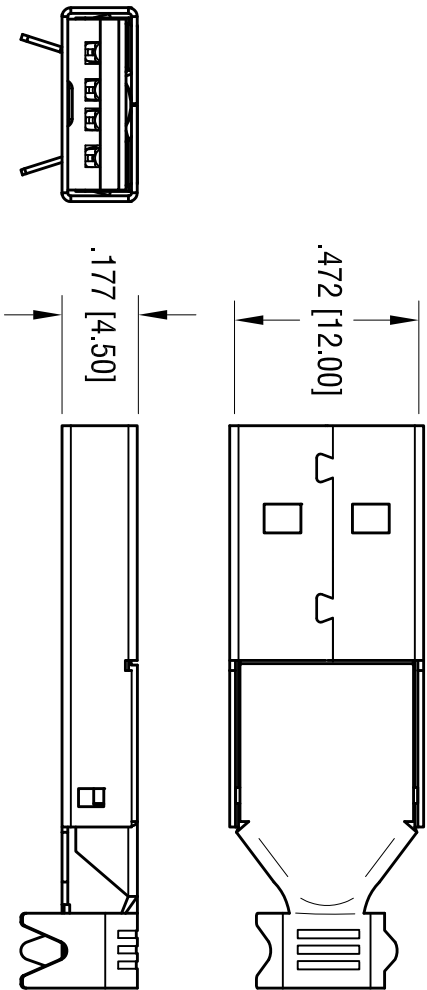


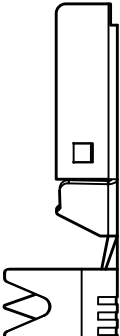
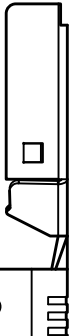
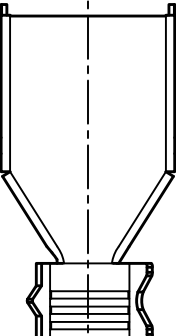
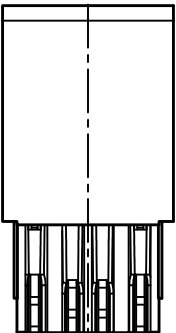
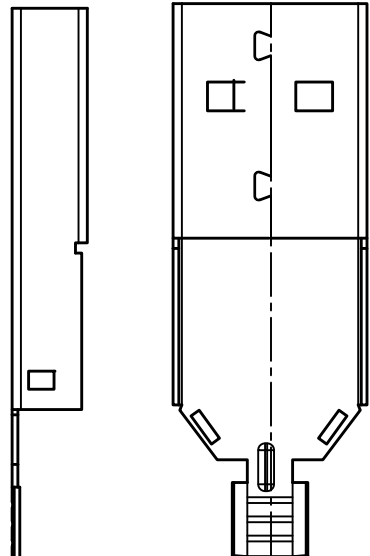
DATE	DESCRIPTION	REV.
4.14.00	CHANGE AS PER ECN 00-024	C
6.8.05	CHANGE AS PER ECN 056-035	D
6.30.08	CHANGE AS PER ECN 08-116	E
12.17.09	CHANGE AS PER ECN 09-191	F
12.21.12	CHANGE AS PER ECN 12-162	G
12.14.17	CHANGE AS PER ECN 17-076	H
7.07.20	CHANGE AS PER ECN 20-065	K
1.20.23	CHANGE AS PER ECN 23-006	L
2.25.25	CHANGE AS PER PCN 25-006. ADDED PACKAGING DETAILS.	M



FRONT SHELL

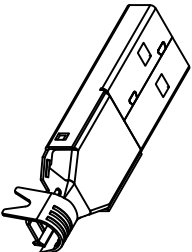
INSULATOR BODY

REAR SHELL



NOTE:

1. SHELL: MAT'L- STEEL
FINISH- NICKEL PLATE, OVER COPPER PLATE
2. INSULATOR: MAT'L- PBT
FINISH: CONTACT AREA- GOLD PLATE, OVER NICKEL
ON SOLDER TAIL- TIN PLATE, OVER NICKEL PLATE
3. CONTACT: MAT'L- BRONZE
4. PACKAGING DETAILS: 100 PIECES PER BAG.



ACTUAL SIZE

KEYSTONE ELECTRONICS CORP.				
www.keyeico.com • NEW HYDE PARK, NY 11040 • Tel (516) 328-7500				
PART NAME				
USB A-TYPE PLUG				
MATERIAL				
AS NOTED				
FINISH				
AS NOTED				
TOLERANCES		INCH	[MM]	CODE
DECIMAL		± .010	[± 0.25]	C
ANGULAR		± 1°		
UNLESS OTHERWISE SPECIFIED				
DRN BY		BOONE	DATE	6.18.98
APPD		RH	SCALE	2X
DWG NO.		925		