

SHENZHEN ATTEN TECHNOLOGY CO., LTD.

- Soldering Iron
- Hot Air Rework Station
- Thermal Wire Stripper
- Automatic Equipment
- Soldering Station
- Multifunctional Maintenance System
- Preheating & Reflow Platform
- Fume Extractor

ATTEN



GT-5150P/GT-5200P Suction Soldering Station Maintenance System User Manual

SHENZHEN ATTEN TECHNOLOGY CO., LTD.

Add: Floor 7 & 8 , Building B, Konka Guangming Technology Center,
No.228 Xingxin Road, Guangming District, Shenzhen 518100, China

Tel: +86 0755-8602 1389 400-998-6633

Web: www.atten.com

Email: sales@atten.com.cn

MADE IN CHINA
CBN039181 (C)

SHENZHEN ATTEN TECHNOLOGY CO., LTD

Table of Contents

| | |
|---|----|
| 01. Safety and Usage Precautions..... | 01 |
| 02. Packaging List..... | 02 |
| Materials Accessories..... | 02 |
| Optional Accessories(Handle)..... | 02 |
| Optional Accessories(Soldering Iron Stand)..... | 03 |
| 03. Specifications..... | 03 |
| Technical Parameters..... | 03 |
| Negative Pressure Penerator Parameters..... | 04 |
| Soldering Iron Parameters..... | 04 |
| Packaging Parameters..... | 04 |
| Exterior Component Diagram (Front) | 05 |
| Exterior Component Diagram (Back) | 06 |
| Keypad Function Descriptions..... | 07 |
| 04. Machine Connection..... | 08 |
| 05. Introduction to the Main Interface..... | 09 |
| Boot-up Display..... | 10 |
| Operating Status..... | 10 |
| Normal Operation..... | 10 |
| Entering Standby Mode..... | 10 |
| Entering Sleep Mode..... | 10 |
| Temperature Adjustment..... | 10 |
| 06. Function Introduction..... | 11 |
| Menu Settings..... | 11 |
| Curve Operation Interface..... | 11 |
| Tool Settings..... | 12 |
| Tool Type..... | 12 |
| Temperature Lock..... | 12 |
| Temperature Compensation..... | 13 |
| Standby Delay..... | 13 |
| Sleep Delay..... | 14 |
| Quick Temperature..... | 14 |
| Standby Temperature..... | 15 |

10/ Product warranty

• Warranty regulations:

- ① The warranty period for this product starts from the date of purchase. During the warranty period, any malfunctions occurring due to the product's own quality issues can be serviced free of charge at our designated authorized repair center (or ATTEN) by presenting the original warranty card in accordance with the terms of this warranty card. Please keep your purchase receipt and this warranty card and present them together during repairs.
- ② During the warranty period, the following situations will incur paid repair services:
 - a. Inability to present a valid warranty card or valid proof of purchase.
 - b. The warranty card has incomplete or altered information, such as the purchase date or seller's name.
 - c. Damage caused by improper operation or failure to follow the instructions and precautions in the user manual.
 - d. Damage resulting from natural disasters or force majeure.
 - e. Damage caused by disassembly, repair, or modification of the product without manufacturer authorization.
 - f. Replacement of consumable or wear-and-tear parts (such as soldering tip , heating elements, and accessories).
- ③ The warranty card must be completed in full by the distributor or user to qualify for the 24-month warranty period.
- ④ Please keep this warranty card safe. Lost cards will not be reissued.
- ⑤ Special cases will be subject to mutual agreement.
- ⑥ The final interpretation rights belong to ATTEN.

User Notice

This product is covered by a 24-month warranty from the date of purchase. In cases of product-related quality issues, ATTEN is responsible for free repairs when presenting this card and the purchase receipt.

Note: When returning the product for repairs, the warranty card must be included, or else free repairs will not be provided. Thank you for your cooperation (please read the warranty policy for more information on warranty-related details).

Product Warranty Card

Product Name: _____

Product Model: _____

Serial Number: _____

Date of Purchase: _____

This product test result is qualified and met the technical standard.



Disclaimer

- We will take no responsibility for any personal injury or property damage caused by reasons other than the product quality problem, which may include force majeure (natural disasters, etc.) or personal behavior during the operation of this product.
- This manual is organized, compiled and released by SHENZHEN ATTEN TECHNOLOGY CO., LTD. According to the latest product features. We will not be responsible for further notice of the subsequent improvement of the product and this manual.

09/Troubleshooting Guide

Warning

- When checking for faults or cleaning the machine, it must be done by a professional. Always disconnect the machine's power and wait for the soldering iron to cool down to room temperature.
- Before carrying out any cleaning or maintenance work, always make sure that the appliance is disconnected from the mains supply by unplugging the power cord from socket-outlet.

| Issue | Possible Causes | Steps to Resolve |
|-----------------|--|---|
| Cannot power on | Fuse is not installed or burnt out. | Check if the wiring is correct, confirm if the fuse is installed or shorted, and replace it with an original fuse as needed. |
| | Poor contact of the power cord. | Check if the power cord is damaged or deformed. If there is an issue, please contact your local dealer. |
| | Mainboard is damaged. | Please contact your local dealer. |
| E-0 | Handle Removed (No Soldering Iron) | 1. Reattach the handle. 2. Check for any internal circuit issues in the handle. |
| E-1 | Open circuit in the heater. | Please contact your local dealer. |
| E-2 | Sensor malfunction | 1. The heater is damaged; replace the heater. 2. Sensor lead is open; check the heater sensor lead. |
| E-3 | No zero crossing signal | The zero-crossing sensor is damaged, or the mains power frequency is incorrect, causing the sensor to be damaged. |
| E-5 | Overcurrent protection | Short circuit inside the heater, it is recommended to replace the heater. |
| E-8 | Over-temperature protection | 1. Temperature sensor is abnormal; it is recommended to replace the heater. 2. The heater temperature is too high, shut down and restart the machine after cooling. 3. Caused by damage to other components, it is recommended to return for factory repair |
| E-9 | Accessories identification abnormality | 1. The device does not support this type of accessory. Please use the original manufacturer's product. 2. Accessory's internal circuitry is abnormal. |

● After-sales contact

- If the machine fails, or cannot work normally due to unknown reasons, please contact the local dealer or manufacturer for consultation.
- After-sales service department Tel: 400-998-6633

Table of Contents

| | |
|--|----|
| Temperature Warning Limits..... | 15 |
| Counter..... | 15 |
| Tool Settings Reset..... | 16 |
| System Settings..... | 16 |
| Language..... | 16 |
| Temperature Unit..... | 16 |
| Temperature Limits..... | 17 |
| Sound..... | 17 |
| Password Switch..... | 17 |
| Password Modification..... | 18 |
| Master/Slave Mode..... | 18 |
| Peripherals..... | 18 |
| Peripheral Power-On Delay..... | 19 |
| Peripheral Power-Off Delay..... | 19 |
| Communication Parameters..... | 20 |
| RS485 Communication (Master Mode)..... | 20 |
| RS485 Communication (Slave Mode)..... | 21 |
| Reset..... | 21 |
| Factory Reset..... | 22 |
| Software Update..... | 22 |
| Soldering Iron Holder Diagram..... | 23 |
| 07. Negative Pressure Generator | 23 |
| 08. Heater Replacement..... | 24 |
| Handle Heater Replacement..... | 24 |
| Tweezer Heater Replacement..... | 24 |
| Cleaning Solder Suction..... | 25 |
| Replacement Of Solder Suction..... | 25 |
| Replacement Of Heating Element Of Desoldering Gun..... | 25 |
| Clean and Replacement Of Solder Storage Tank..... | 26 |
| 09. Troubleshooting Guide..... | 27 |
| 10. Product Warranty..... | 28 |

01/Safety and Usage Precautions

- This product (including internal software) and its accessories are protected by relevant national laws. Any infringement on our rights will be subject to legal penalties. Users should voluntarily adhere to the relevant national laws while using this product.
- **Thank you for using our product. Before using this product, please carefully read this manual and take note of the warnings and precautions mentioned. Keep it in a safe place for future reference.**

Warning Improper use may result in death or serious injury.

Caution Improper use may result in personal injury or substantial damage to objects involved.

- We require users to have a basic understanding of everyday life and basic knowledge of electrical operations before using this product. For underage users, please use this product under the guidance of a professional or a guardian.

Caution To prevent injury, maintain a safe operating environment.

- When using this machine, the following basic points must be adhered to in order to prevent electrical shocks, injuries to individuals, or potential hazards such as fires.
- To ensure personal safety, only use genuine or recommended parts and accessories; otherwise, serious consequences may occur.

Warning

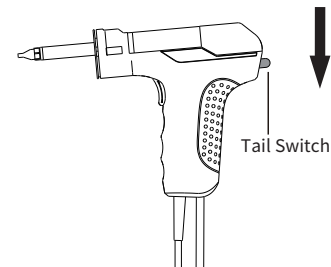
- READ ALL INFORMATION BEFORE USE.
- Power off when not in use or unattended. Place the soldering iron handle the iron stand, This tool must be placed on its stand when not in use.
- Keep this product away from flammable materials. When using, please inform other people in the area near the machine. Please do not touch the machine because of high temperature
- Do not apply to the same place for a long time.
- Be aware that heat may be conducted to combustible materials that are out of sight.
- Do not leave the appliance unattended when it is switched on.
- This appliance is not intended for use by persons (including children) with reduced physical, sensory or mental capabilities, or lack of experience and knowledge, unless they have been given supervision or instruction concerning use of the appliance by a person responsible for their safety.
- Children should be supervised to ensure that they do not play with the appliance.
- Cleaning and user maintenance shall not be made by children without supervision.
- If the supply cord is damaged, it must be replaced by the manufacturer, its service agent or similarly qualified persons in order to avoid a hazard.

Caution

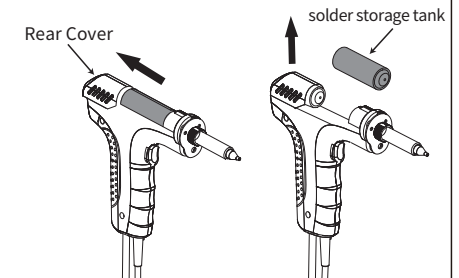
- Before connecting the power, please ensure that the voltage used by this product complies with the applicable voltage in your local area to prevent permanent damage to the machine. Before connecting the power, please ensure that the voltage used by this product complies with the applicable voltage in your local area to prevent permanent damage to the machine.
- When soldering, there will be smoke. Please use this product in a well-ventilated environment.
- When using this product, the temperature of the soldering tip can reach 80°C to 500°C (176°F to 932°F). Misuse may result in burns or fire.
- Users without relevant guidance, experience, or adequate knowledge preparation should refrain from using this product.
- Do not wet the soldering station. Avoid operating this product with wet hands or in a damp environment to prevent electrical shock.
- Do not immerse heater in liquids to prevent damage to heater.
- This product has grounding functionality. To ensure proper operation, make sure the power source is properly grounded when connecting the machine.
- When replacing parts or installing soldering tips, turn off the power and allow the soldering tip to cool to room temperature.
- Use original ATTEN parts when replacing product components.
- Do not engage in play or any dangerous activities while using the equipment, as this may lead to harm to yourself or others.
- Please do not use this product for purposes other than its intended function, as it may lead to damage to the machine or personal injury.
- Do not modify this product or its accessories, as this may void the manufacturer's warranty and damage the product.
- When plugging or unplugging the power cord, grip the plug body and avoid pulling or tugging the cord.
- Do not strike this product and its accessories with force during use, as it may damage the product.

• Clean and Replacement of Solder Desoldering Gun Solder Storage Tank:

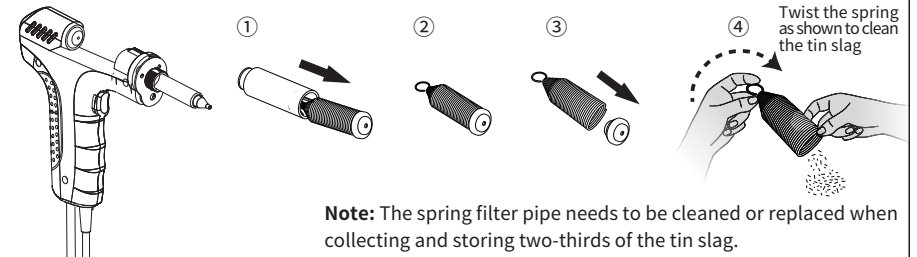
1 Clean and replacement of solder desoldering gun solder storage tank;



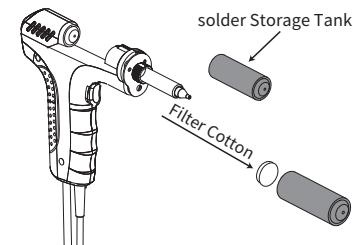
2 Push back the back cover to remove the solder storage tank;



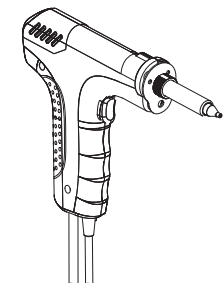
3 Take out the spring in the solder storage tank, pull out the rubber plug and twist the spring clockwise to clean the tin slag;



4 (as shown in the picture) if the filter cotton is hardened due to the accumulation of solder and flux or the negative pressure generator is "CLOGGED" if the light is red, it needs to be replaced.

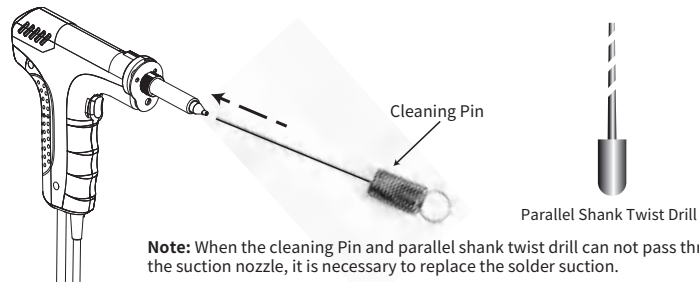


5 Reload the solder storage tank into the desoldering gun

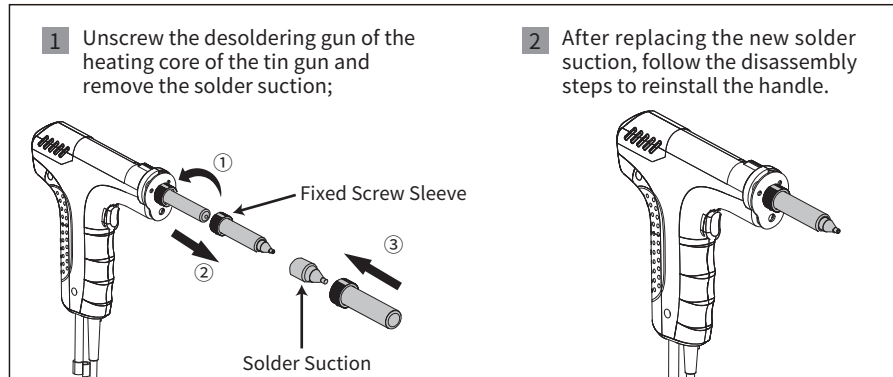


• Cleaning solder Suction:

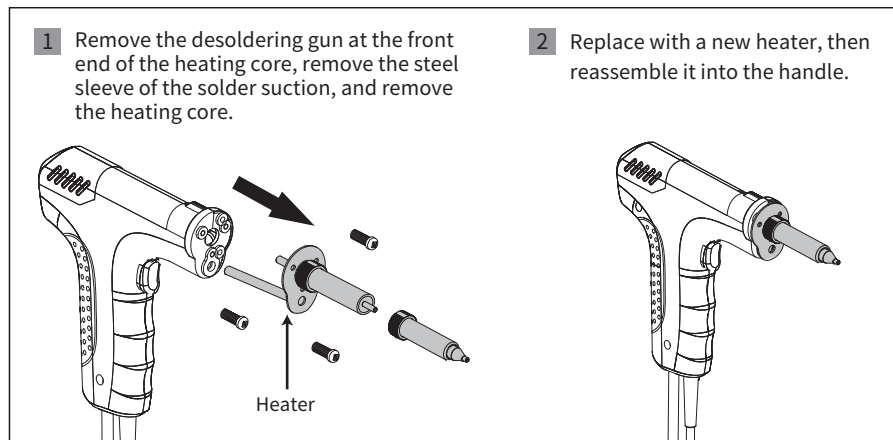
When the solder suction is blocked, it can be cleaned for the solder suction.
If there is residual tin agglomeration, it can be cleaned with straight handle twist drill.



• solder suction Replace:



• Desoldering Gun Heater Replacement:



02/Packaging List

| Model | Main Unit | Electric Desoldering | Desoldering Gun | GT Series Handle | Soldering Iron Stand | Connection Line |
|---------------------------|------------------|----------------------|-----------------|------------------|----------------------|-----------------|
| GT-5150P (Single-channel) | GT-6150 *1 PC | *1 PC | *1 PC | X | *1 PC | *1 PC |
| GT-5200P (Dual-channel) | GT-6200 *1 PC | *1 PC | *1 PC | *1 PC | *2 PCS | *1 PC |

| Model | Soldering Iron Stand Line | Grounding Wire | Power Cord | User Manual | Certificate |
|---------------------------|---------------------------|----------------|------------|-------------|-------------|
| GT-5150P (Single-channel) | X | *1 PC | *2 PCS | *1 PC | *1 PC |
| GT-5200P (Dual-channel) | *1 PC | *1 PC | *2 PCS | *1 PC | *1 PC |

• Materials Accessories

| Solder Suction | Cleaning Pin | Twist Drill | O-Ring Seal | Filter Cotton | Filter Paper | Inner Pipe (Carbon Spring) | Pipe Front Holder | Open-end Spanner | Cleaning Pin Set |
|----------------|--------------|-------------|-------------|---------------|--------------|----------------------------|-------------------|------------------|------------------|
| *3 PCS | *2 PCS | *1 PC | *2 PCS | *10 PCS | *10 PCS | *1 PC | *2 PCS | *1 PC | *1 PC |

• Optional Accessories

Handle



GT-Y050P



GT-Y130P



GT-Y150P



GT-N100P



GT-X150P

• Optional Accessories

Soldering Iron Stand



S-19



S-20



S-21

03/Specifications

• Technical Parameters

Main Unit

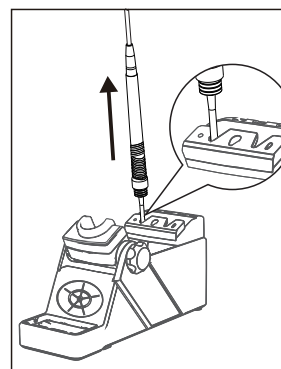
| Main Unit | GT-5150P (Single-channel) | GT-5200P (Dual-channel) |
|----------------------------------|--|---|
| Input Voltage | AC 220-240V~ 50/60Hz (AC 110-120V~ 60Hz) | |
| Power | 150W(Host) +60W (GT-510) (Peak Power 204W) | 200W(Host) +60W (GT-510) (Peak Power 263W) |
| Temperature Range | Soldering Iron: 80°C~500°C/176°F~932°F Desoldering Gun: 350°C~500°C/662°F~932°F | |
| Temperature Compensation | ±50°C/±90°F | |
| Temperature Unit | °C/°F, Default is °C | |
| Temperature Adjustment Increment | Long press for quick adjustment, short press to adjust in increments of 1 unit | |
| Quick Parameters | Supports customization of 10 sets of quick parameters | |
| Temperature Lock | Supported | |
| Electrostatic Grounding | Supported | |
| USB Firmware Upgrade | Supported | |
| Communication Interface | RS485 | |
| Sleep Delay | Adjustable from 0 to 60 minutes (can be disabled, default is 15 minutes) | |
| Language | Supports chinese and english interfaces | |
| Display | TFT color screen | |
| Operating Environment | 0°C~40°C, humidity <85%RH | |
| Dimensions | 230(L)x142(W)x145(H)mm | |
| Weight (Main Unit) | ≈3.2 kg | |

08/Heating Unit Replacement

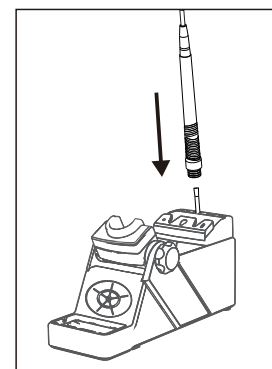
⚠ Warning

When replacing the heater and solder suction, be sure to disconnect the machine's power and wait for the heater and handle to cool down to room temperature.

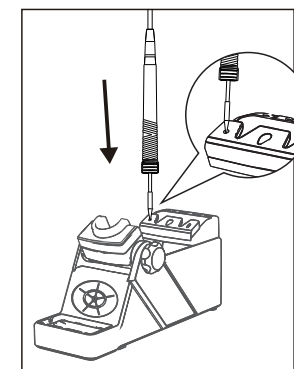
• Heater Replacement:



① Place the handle into the "V" groove of the soldering iron stand and pull up the heater in the direction indicated by the arrow.



② When replacing the heater, align the handle barrel with the heater. (Pay attention to the alignment groove)



③ Depending on the shape of the heater tip, choose the appropriate hole position and install the heater in place following the direction indicated by the arrow.

④ After replacing the new heater, reassemble it into the handle.

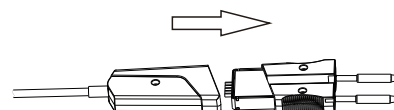
>>Reinstall<<



• Tweezer Heater Replacement:

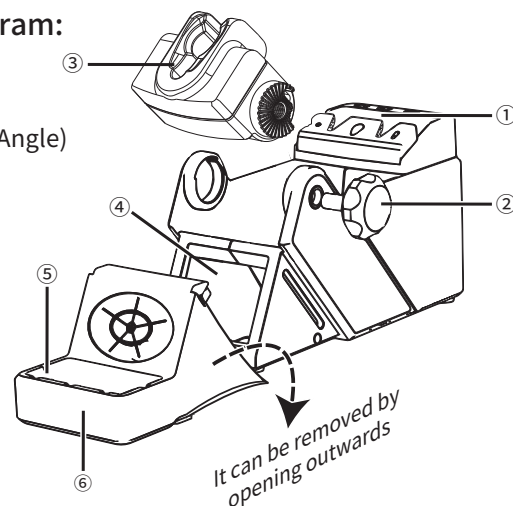
① Remove the heater from the tweezer section in the direction indicated.

② Replace with a new heater, then reassemble it into the handle.



• Soldering Iron Holder Diagram:

- ① Rear Holder
- ② Knob (Removable, Adjustable Angle)
- ③ Soldering Iron Holder
- ④ Cleaning Brass Wire
- ⑤ Cleaning Sponge
- ⑥ Removable Silicone Base

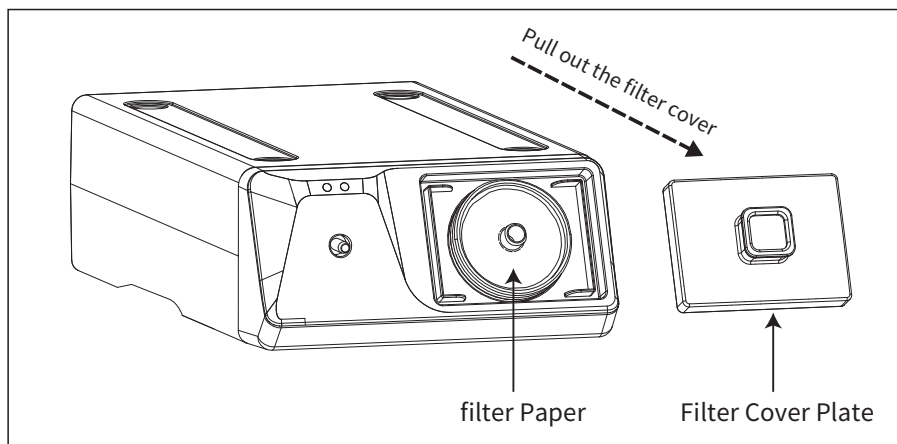


07/Negative Pressure Generator Consumable Materials

⚠ Warning

When replacing the negative pressure generator consumables, be sure to cut off the power supply of the machine.

- The filter paper needs to be replaced when it is hardened by deposition of solder and flux or when the negative pressure generator is "CLOGGED" and the red light is always on.
- Remove the filter cover plate of the negative pressure generator along the direction shown, remove the filter paper, replace the new filter paper, and put the filter cover plate back into the machine again, and the consumables are replaced.



• Negative Pressure Generator Parameters

| | |
|--------------------------|--------------------------|
| Product Model | GT-510 |
| Power | 60W(Peak Power 71W) |
| Communication Interface | RJ12 (Low Level Trigger) |
| Vacuum Pressure | -80Kpa |
| Air Flow | 36L/min(MAX) |
| Clogged Alarm | Supported |
| Filter Paper Replacement | Supported |
| Dimensions | 140(L)x255(W)x70(H)mm |
| Weight | ≈1.4kg |

• Soldering Iron Parameters

| | | | | | |
|-------------------------|---|--|---|---|---|
| Product Model | GT-X150P | GT-Y050P | GT-Y130P | GT-Y150P | GT-N100P |
| Power | ≥150W | ≥50W | ≥130W | ≥150W | ≥100W*2 |
| Heating Core Model | HS-5150H | T50-0.5I (Standard) T50 Series (Optional) | T130-1.0I (Standard) T130Series (Optional) | T150-4.6D (Standard) T150Series (Optional) | T100-0.5I (Standard) T100Series (Optional) |
| Soldering Tip Model | T151-1.0 (Standard) T151 Series (Optional) | | | | |
| Tip-to-ground Impedance | ≤2Ω | | | | |
| Tip-to-ground Voltage | ≤2mV | | | | |
| Cable Length | 120cm | 150cm | | | |
| Dimensions | 185 (L) x 40 (W) x 18 (H) mm | 240 (L) x 15 (W) x 15 (H) mm | | | 140 (L) x 32 (W) x 14 (H) mm |
| Weight | ≈0.27kg | ≈0.1kg | | | ≈0.095 kg |

• Packaging Parameters

| Model | Inner Box Packaging | | Outer Carton Package | |
|----------|---------------------|-----------------------|-----------------------------|---------------------|
| GT-5150P | 445x405x235mm | Gross Weight: ≈6.16KG | 465x425x500mm (2Pcs/Carton) | Gross Weight: ≈15KG |
| GT-5200P | | Gross Weight: ≈8.43KG | | Gross Weight: ≈18KG |

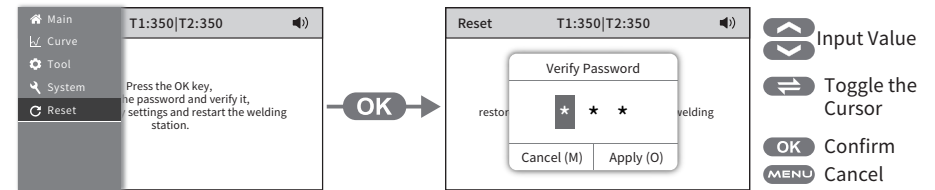
- Exterior Component Diagram (Front):






| Serial Number | Component Description |
|---------------|---|
| ① | Display screen |
| ② | Keypad area |
| ③ | Desoldering gun interface |
| ④ | Indicator Lights: POWER: Power indicator, green light after power on. CLOGGED: When a clogged alarm occurs, the red light is always on. |
| ⑤ | Desoldering gun air pipe interface |
| ⑥ | Filter cover plate |
| ⑦ | Soldering iron stand connection line interface (only for GT-5200P) |

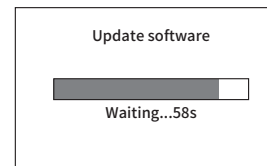
- **Factory Reset:**

To restore factory settings, a password must be entered. After entering the correct password, the machine will automatically restart and restore the factory settings.

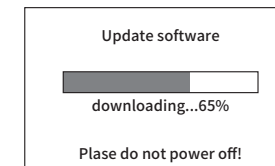


- **Software Update:**

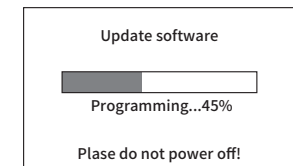
- ① Use USB cable to connect the machine with the corresponding interface of the computer.
- ② In the power off state of the machine, press and hold the " " " " " " key and turn on the power switch, the screen shows the countdown to upgrade (Figure 1-4).
- ③ Please visit the "www.atten.com.cn" official website or contact the manufacturer for downloading the corresponding driver, Copy the upgrade software to the machine's USB cable storage disk recognized by the computer, and the machine will automatically load the upgrade software (Figure 1-5).
- ④ After the upgrade software is loaded, the machine will be automatically upgraded (Figure 1-6), and the machine will be restarted automatically after the upgrade is completed.



(Figure 1-4)



(Figure 1-5)

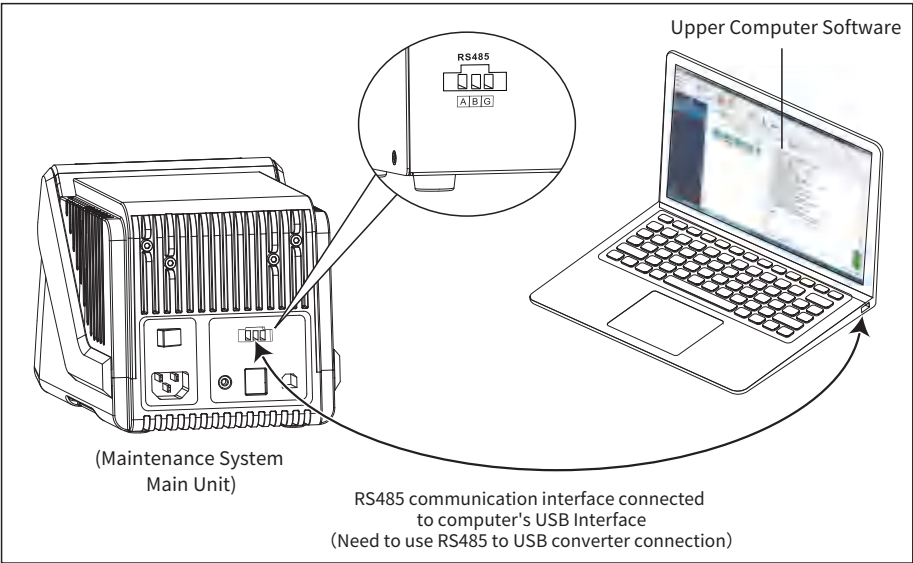


(Figure 1-6)

Note: During software update, all buttons are disabled. Do not disconnect the power or turn off the machine, as it may cause damage to the machine.

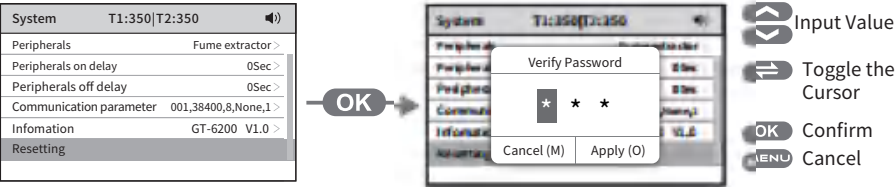
• RS485 Communication (Slave Mode):

- ① Set the suction soldering station maintenance system mode to slave mode.
- ② The following figure uses the RS485 to USB converter to connect the RS485 interface of the product with the USB interface of the computer side;
- ③ On the computer side, use upper computer software to control the suction soldering station maintenance system with commands.



Please visit the "www.aten.com.cn" official website or contact the manufacturer for downloading the corresponding driver, DEMO software, and communication protocol documentation.

• Reset:

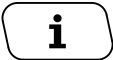
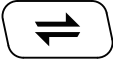






• Exterior Component Diagram (Back)



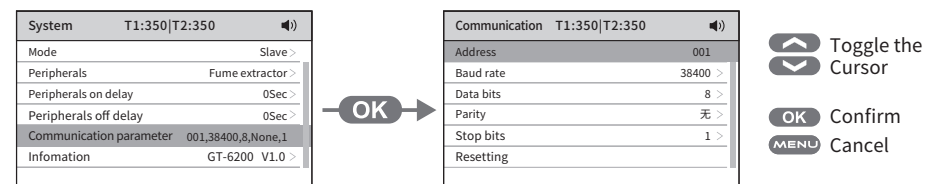
| Serial Number | Component Description |
|---------------|---|
| ① | Suction soldering station maintenance system power switch |
| ② | Suction soldering station maintenance system power interface |
| ③ | RS485 communication interface |
| ④ | USB interface |
| ⑤ | Control output (connected with the negative pressure generator) |
| ⑥ | Grounding wire interface |
| ⑦ | Grounding wire interface power switch |
| ⑧ | Grounding wire interface power interface |
| ⑨ | Control input (connected with the main unit) |

• Keypad Function Descriptions

| Key | Function Description |
|---|--|
|  | 1. Analyze or explain all the options on the machine. |
|  | 1. On the main interface, short press can switch between Tool 1 and Tool 2 (only for GT-5200P) 2. In the curve operation Interface, short press can switch between Tool 1 and Tool 2 (only for GT-5200P) 3. On the parameter settings page, switch the cursor within the numerical settings |
|  | 1. In the menu setting navigation bar, short press to enter the menu setting options; 2. In the menu setting page, short press to open and close the sound and quick temperature group; 3. In the menu setting page, short press to enter the parameter setting page; 4. In the parameter setting page, short press to confirm and save parameters. |
|  | 1. In the main interface or parameter setting page, short press to increase the parameter; 2. In the navigation bar page or menu setting page, short press to scroll up through the options; 3. In the main interface, after the quick temperature group is enabled, short press to switch between quick temperatures. |
|  | 1. In the main interface, short press to display the menu setting navigation bar; 2. In the menu setting page, short press to return to the main interface; 3. In the parameter setting page, short press to return to the previous level |
|  | 1. In the main interface or parameter setting page, short press to decrease the parameter; 2. In the navigation bar page or menu setting page, short press to scroll down through the options; 3. In the main interface, after the quick temperature group is enabled, short press to switch between quick temperatures. |

• Communication Parameters

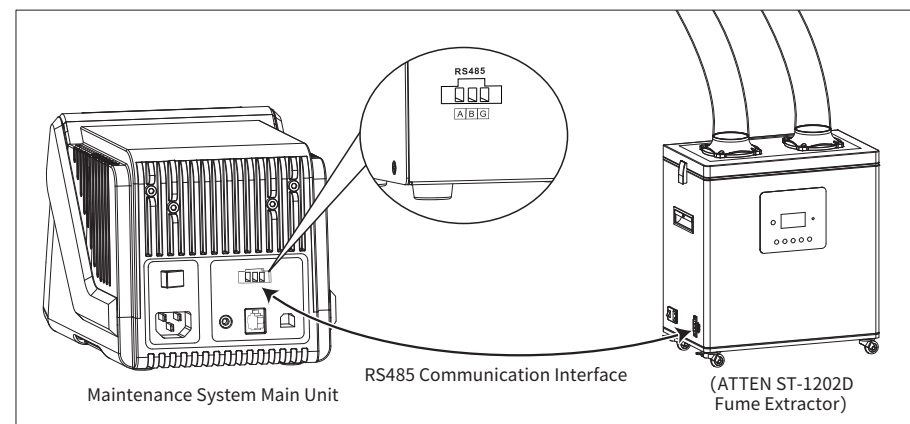
Choose the communication parameters function under system settings to set the communication parameters.



Address: For RS485 communication connection, the address code of both machines and equipment should be consistent. (with a range of 1 to 255).

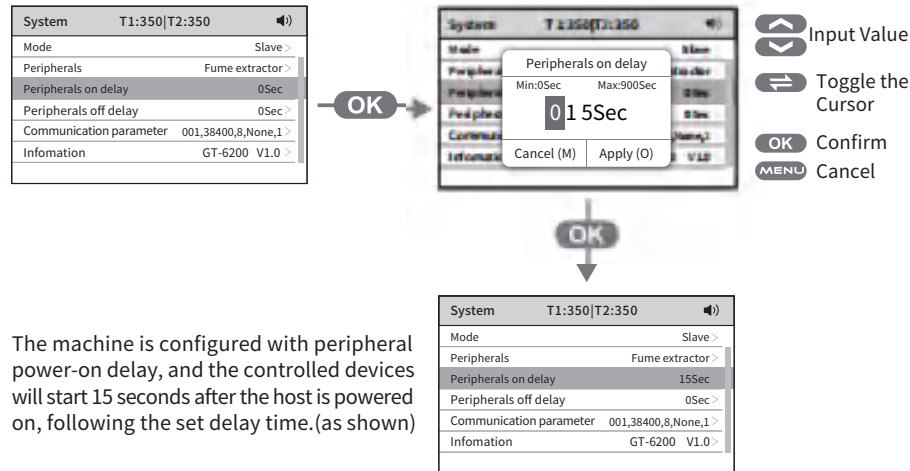
• RS485 Communication (Master Mode):

(Note: Peripheral power on delay is only effective when the suction Soldering station maintenance system mode is set to master mode, and both machines have the same address code. It is used in conjunction with the ATTEN smoke fume extractor.)
The connection method is as shown in the diagram:



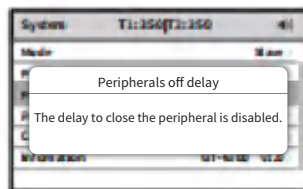
• Peripheral Power On Delay:

In the system settings page, select the peripheral Power On Delay function, and press "OK" to enter the peripheral power on/off delay parameter settings. (Factory default is 0 seconds, with a range of 0-900 seconds)



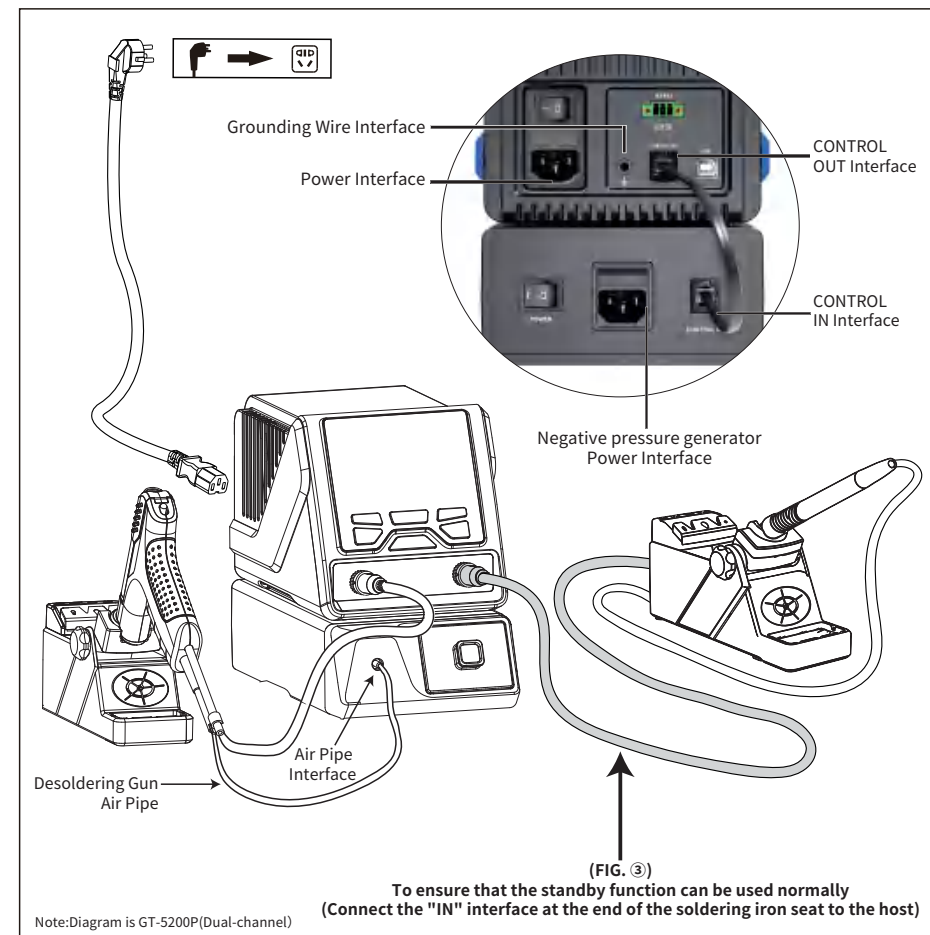
• Peripheral Power Off Delay:

In the system settings page, select the peripheral power off delay function.
(Note: This feature is not available yet)

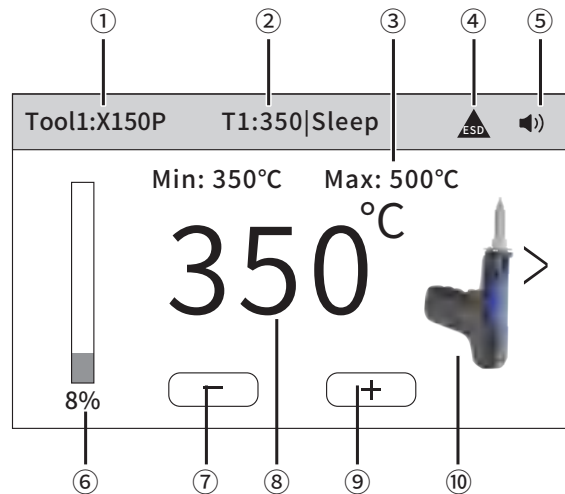


04/Machine Connection

- 1 Connect the power cord, ground wire to the corresponding interfaces on the main unit.
- 2 Place the desoldering gun handle on the soldering iron stand and connect the cable to the main unit's interface, and the desoldering gun trachea is connected with the negative pressure generator interface;
- 3 Place the soldering handle on the soldering iron stand, In order to ensure the normal use of standby function, the soldering iron seat connection line needs to be connected with the corresponding interface of the host, and the soldering iron handle is connected with the interface of the soldering iron seat.
- 4 Connect the "CONTROL OUT" interface of the host machine with the "CONTROL IN" interface of the negative pressure generator using the control connection cable.



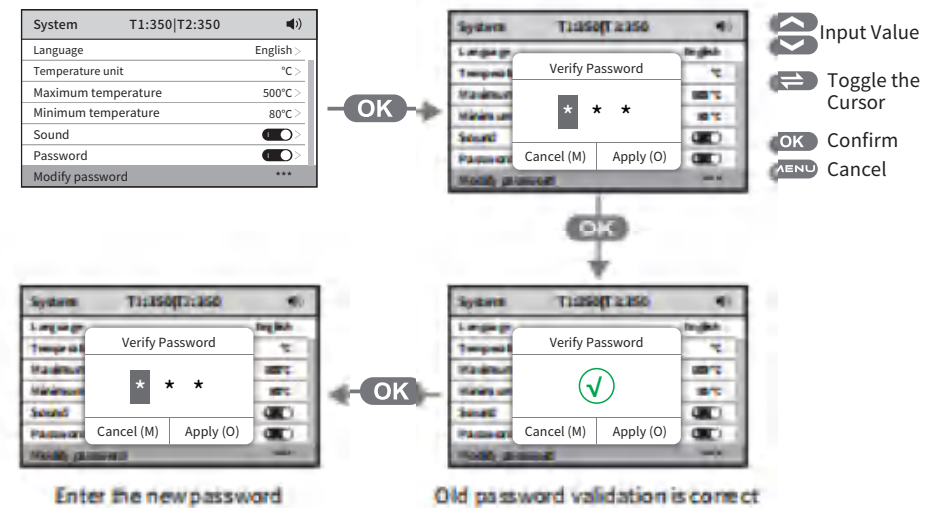
05/Main Interface



| Serial Number | Heating Module |
|---------------|---|
| ① | Tool model |
| ② | Tool status display |
| ③ | Adjustable temperature Range |
| ④ | The icon blinks when the machine is ungrounded/does not show when the machine is grounded |
| ⑤ | Sound activation icon (Not displayed when sound is turned off) |
| ⑥ | Heating power simulation bar: Displays the current working heating power intensity |
| ⑦ | Temperature "-" icons |
| ⑧ | Current temperature display |
| ⑨ | Temperature "+" icons |
| ⑩ | Current tool image |

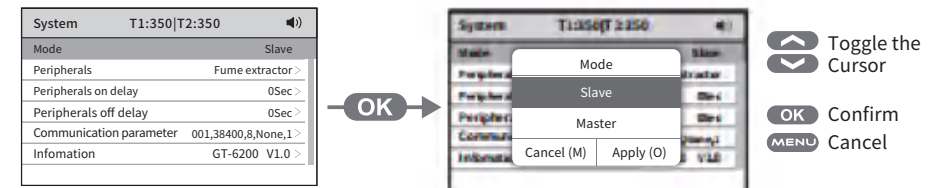
• Password Modification:

In the system settings page, select "password modification," then press "OK" to set a new password after validating the old password.



• Master/Slave Mode:

Choose the mode function under system settings to set the machine's master/slave mode. (Please refer to page 20 for connection via RS485 communication interface.)



Slave Mode: External device controls the suction soldering station maintenance system.

Master Mode: Suction soldering station maintenance system controls external devices

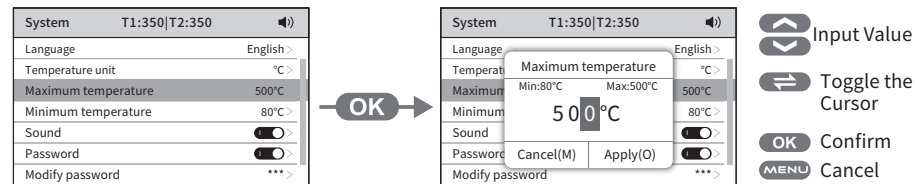
• Peripherals:

Choose the peripherals function under system settings to set the peripherals type.



• Temperature Limits:

In the system settings, selecting the temperature upper or lower limit function enables setting temperature warning parameters.

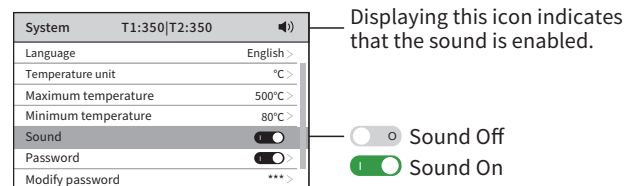


Note: Temperature upper and lower limits can restrict the maximum and minimum ranges of the machine's temperature settings. (Factory default temperature upper limit is 500°C/932°F, temperature lower limit is 80°C/176°F, adjustable range: 80°C to 500°C/176°F to 932°F)

• Sound:

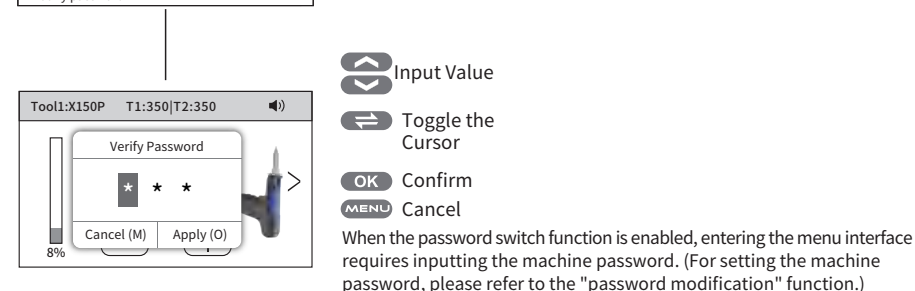
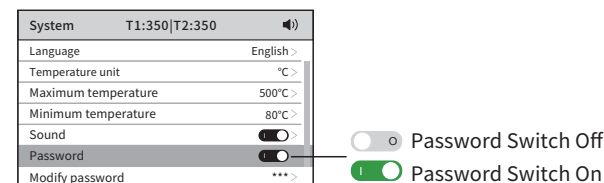
In the system settings page, select the sound function and press "OK" to turn the machine's sound on or off.

Note: When the does not reach the set temperature, the machine's audible alerts function, when enabled, will emit a regular beeping sound.



• Password Switch:

In the system settings page, select the password switch function and press "OK" to turn the password switch on or off.



• Boot-up Display:

After the machine is powered on, turn on the power switch, and the screen will display the ATTEN boot animation for 2 seconds before entering the main interface.



• Operating Status:

• 1. Normal Operation:

(Figure 1-1) Meaning: The current temperature data value is 350°C, and the heating power is 8%.

• 2. Entering Standby Mode:

(Figure 1-2) Meaning: When the desoldering gun handle is placed on the soldering iron stand without any operation, it will enter standby mode by default after 1 minute, and the screen will display the standby status with the soldering iron temperature reduced to 350°C while maintaining heating output.

(The use of the standby function of the GT-5200P soldering iron handle requires connection to the corresponding interface of the main unit (Please refer to page 8)

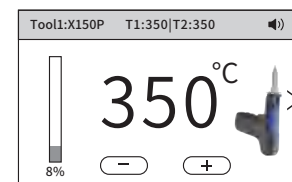
(The soldering iron default temperature is 200°C, desoldering gun default temperature is 350°C, and it can be customized through the standby temperature menu. if the standby temperature is set lower than 200°C, it will display the real-time temperature.)Picking up or touching the handle will resume normal operation.

GT-X150P it needs to recover to work by pressing panel button or button on desoldering gun. (Menu settings can customize standby time and turn off standby function.)

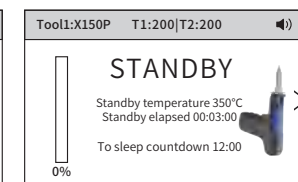
• 3. Entering Sleep Mode:

(Figure 1-3) Meaning: Heating function of Tool 1 is turned off, handle heater is not heated, it enters sleep mode. Picking up the handle will resume normal operation. GT-X150P need short pressing panel button will resume normal operation.

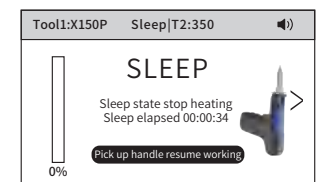
(After enabling the standby function, the default is 15 minutes to enter sleep mode, and menu settings can customize the sleep time and disable the sleep function.)



(Figure 1-1)



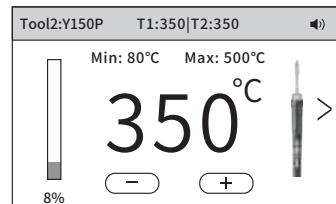
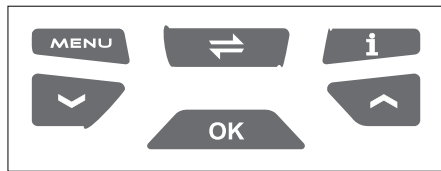
(Figure 1-2)



(Figure 1-3)

• Temperature Adjustment:

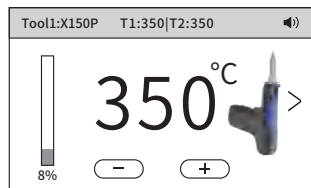
On the main interface, short press the "v" or "^" button on the machine panel to adjust the temperature value in increments of 1°C. Long press for fast adjustment. The temperature settings will be automatically saved after stopping the button for 3 seconds. (When the temperature lock is enabled, the temperature value cannot be adjusted.)



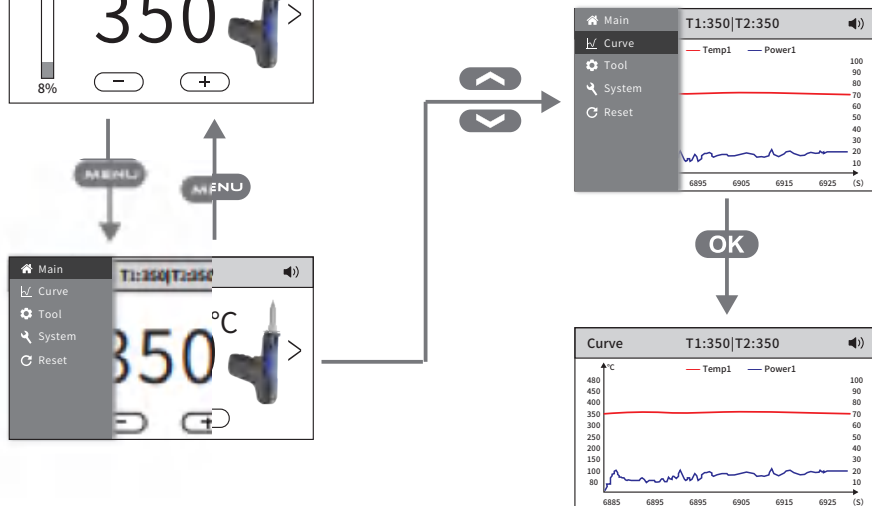
(On GT-5200P, the "⇌" button can switch between tool 1 and tool 2 interfaces)

06/Function Introduction

• Menu Settings:

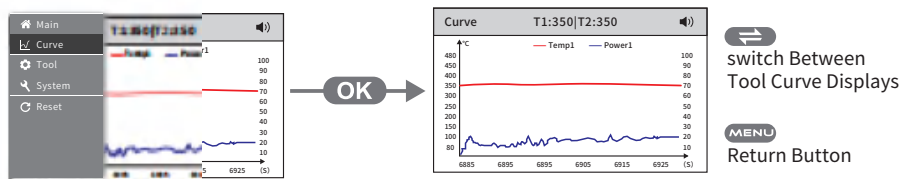


Short press "MENU" on the main interface to access the menu page. the selectable functions include curve settings, tool settings, system settings and factory reset (as shown).



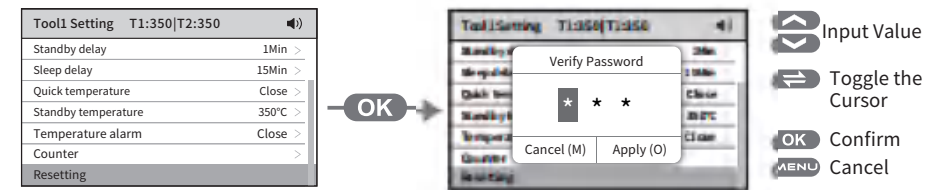
• Curve Work Interface:

In the curve operation Interface, can see the temperature and power curves of the current tool, "⇌" button to switch between Tool 1 and Tool 2 curve displays.



• Tool Settings Reset:

For the tool settings reset, select the reset function under the tool settings and enter the machine password.

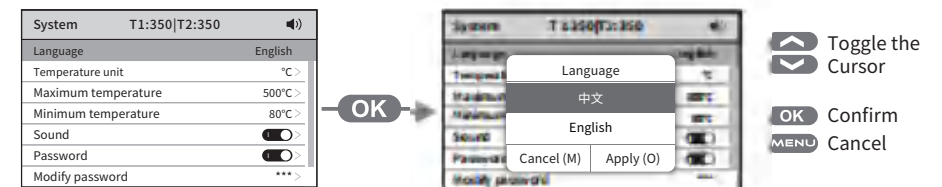


• System Settings:

System settings can set language, temperature unit, temperature upper, temperature lower limit, sound, password switch, change password, mode, peripheral power-on delay, peripheral power-off delay, Communication, information, and reset function.

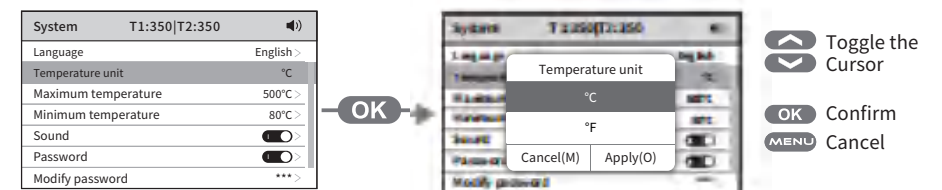
• Language:

Choose the language function under system settings to set the machine's language.



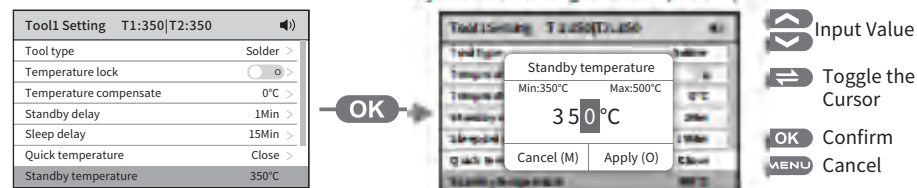
• Temperature Unit:

Choose the temperature unit function under system settings to set the temperature unit.



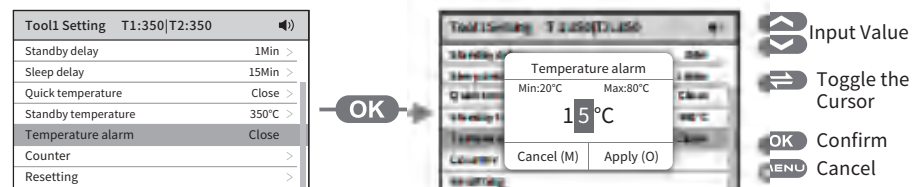
• Standby Temperature:

In the tool settings, selecting the standby temperature function enables adjustment of the standby temperature parameter (Soldering iron adjustable within the range of 80°C to 500°C / 176°F to 932°F, with a factory default setting of 200°C / 392°F, soldering gun adjustable within the range of 350°C to 500°C / 662°F to 932°F, with a factory default setting of 350°C / 500°F).



• Temperature Warning:

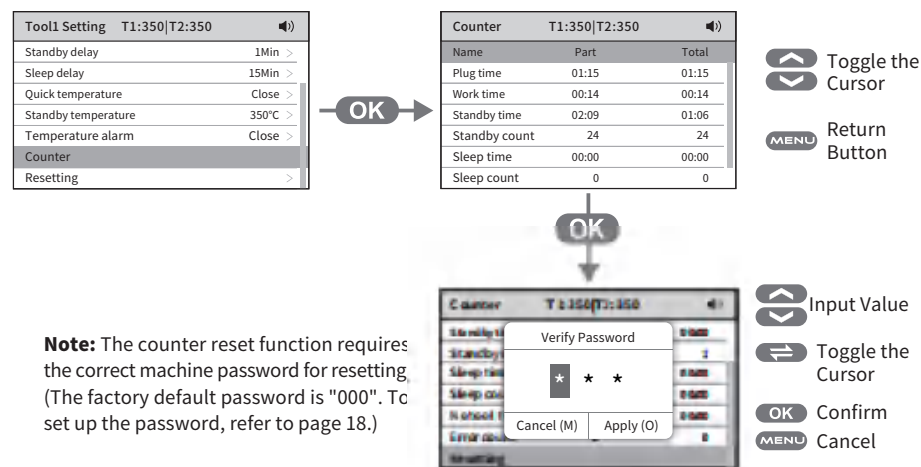
In the tool settings, selecting the temperature warning function enables adjustment of the temperature warning parameter (adjustable within the range of 20°C to 80°C / 68°F to 176°F, with a factory default setting of 20°C / 68°F).



Note: When the temperature does not reach the set temperature warning value, the machine's audible alerts function, when enabled, will emit a regular beeping sound. For audible alerts function settings, please refer to page 13.)

• Counter:

In the tool settings, selecting the counter allows access to the current tool information.



Note: The counter reset function requires the correct machine password for resetting. (The factory default password is "000". To set up the password, refer to page 18.)

• Tool Settings:

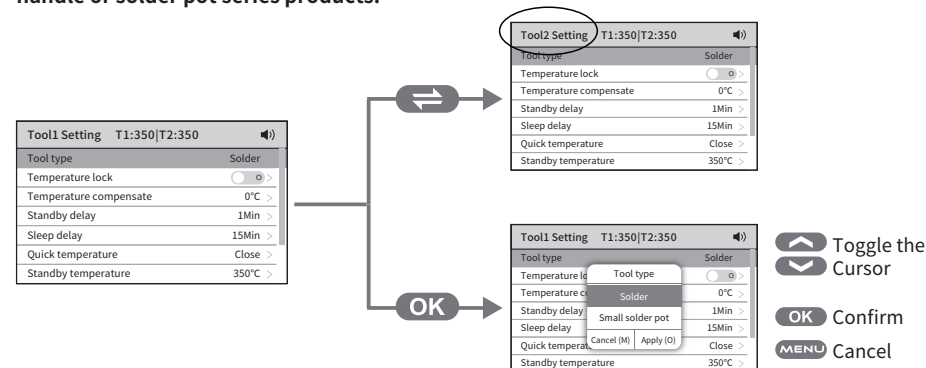
Tool settings can set Temperature lock, Temperature compensation, Standby delay, Sleep delay, Quick temperature, Standby temperature, Temperature warning, Counter, and Parameter reset functions.

In the tool settings interface, short press the "↵" or "⏮" button to switch parameters, and press the "⇌" button to switch between Tool 1 and Tool 2 settings (Note: this button is ineffective for the GT-5150P model). The "MENU" button can be used to return to the main interface.

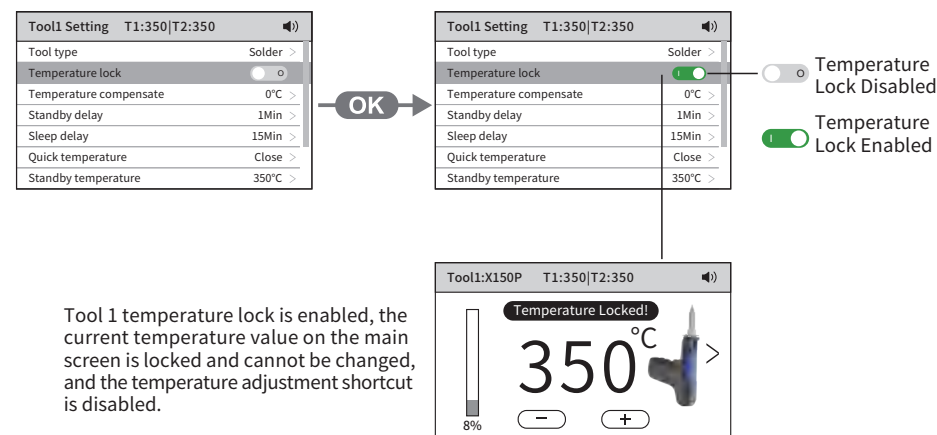
• Tool Type:

Choose the temperature unit function under system settings to set the tool type parameter.

Note: This function is only available for selecting the tool type when connecting the GT-Y150 handle or solder pot series products.

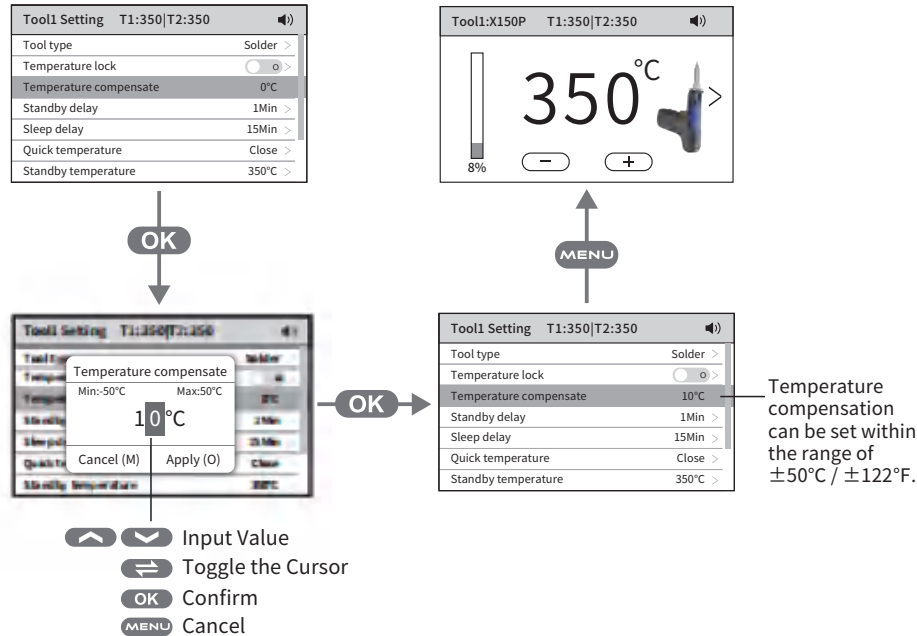


• Temperature Lock:



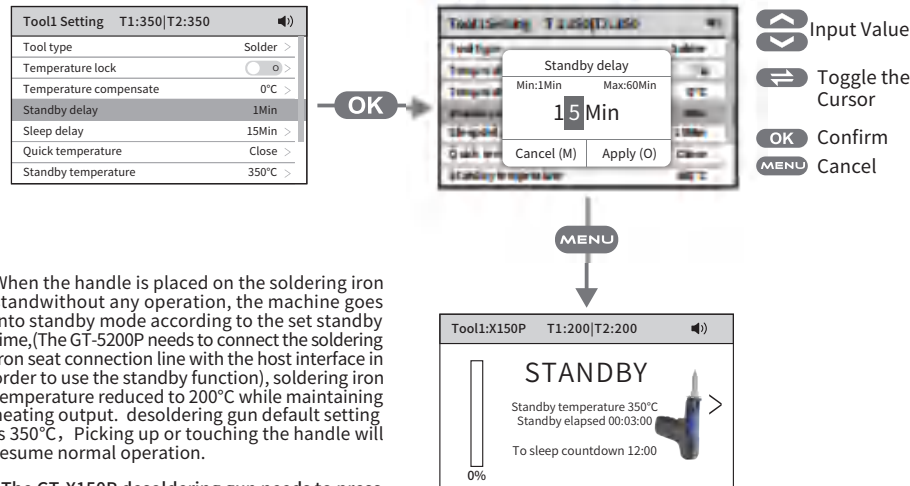
Tool 1 temperature lock is enabled, the current temperature value on the main screen is locked and cannot be changed, and the temperature adjustment shortcut is disabled.

• Temperature Compensation:



• Standby Delay:

In the tool settings, select the standby delay function to set the standby delay parameter. (Adjustable from 1 to 60 minutes, can be turned off, Desoldering Gun default setting is 1 minutes)

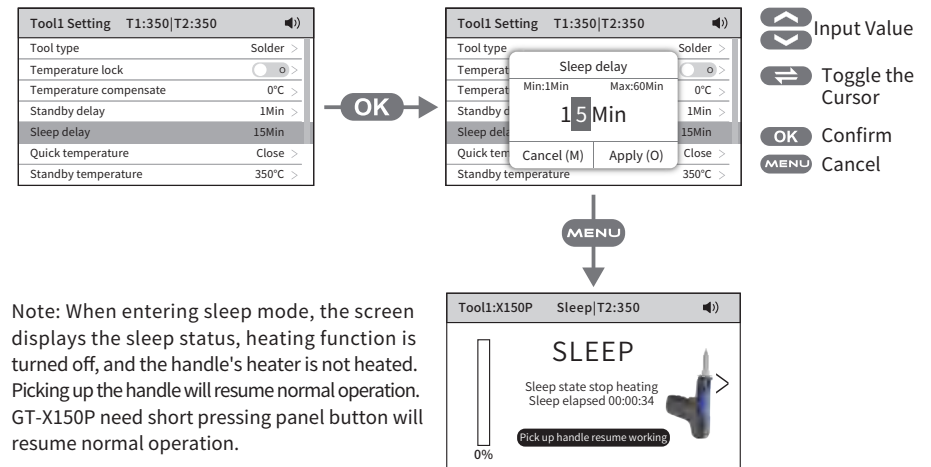


When the handle is placed on the soldering iron stand without any operation, the machine goes into standby mode according to the set standby time. (The GT-5200P needs to connect the soldering iron seat connection line with the host interface in order to use the standby function), soldering iron temperature reduced to 200°C while maintaining heating output. Desoldering gun default setting is 350°C. Picking up or touching the handle will resume normal operation.

(The GT-X150P desoldering gun needs to press the handle button or any button of the machine to restore normal work)

• Sleep Delay:

Selecting the sleep delay function in the tool settings allows for setting the sleep delay parameter. (Adjustable from 1 to 60 minutes, can be turned off, default setting is 15 minutes at factory settings)

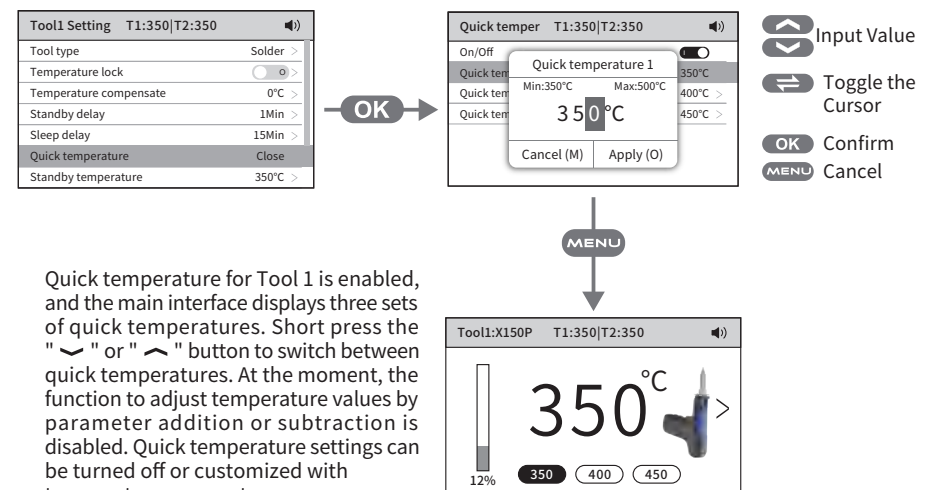


Note: When entering sleep mode, the screen displays the sleep status, heating function is turned off, and the handle's heater is not heated. Picking up the handle will resume normal operation. GT-X150P need short pressing panel button will resume normal operation.

• Quick Temperature Groups:

In the quick parameter Group function, three sets of quick temperature can be customized. (Soldering iron factory defaults for quick parameters are [1]: 200°C/392°F, [2]: 350°C/662°F, [3]: 400°C/752°F)

(Desoldering Gun factory defaults for quick parameters are [1]: 350°C/662°F, [2]: 400°C/752°F, [3]: 450°C/842°F)



Quick temperature for Tool 1 is enabled, and the main interface displays three sets of quick temperatures. Short press the "v" or "^" button to switch between quick temperatures. At the moment, the function to adjust temperature values by parameter addition or subtraction is disabled. Quick temperature settings can be turned off or customized with temperature parameters.